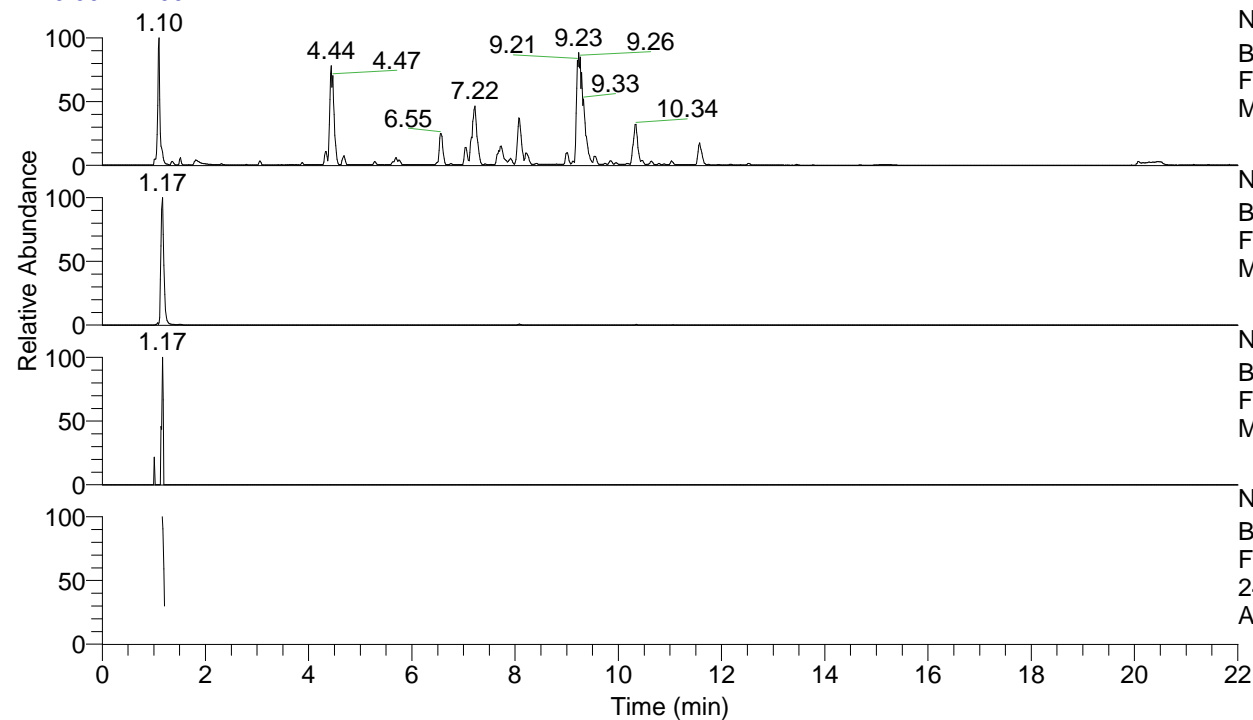


RT: 0.00 - 22.00



NL: 1.25E8
 Base Peak m/z= 100.00000-1500.00000 F:
 FTMS + p ESI Full ms [100.00-1500.00]
 MS Apotteri

NL: 3.62E6
 Base Peak m/z= 245.23291-245.23537 F:
 FTMS + p ESI Full ms [100.00-1500.00]
 MS Apotteri

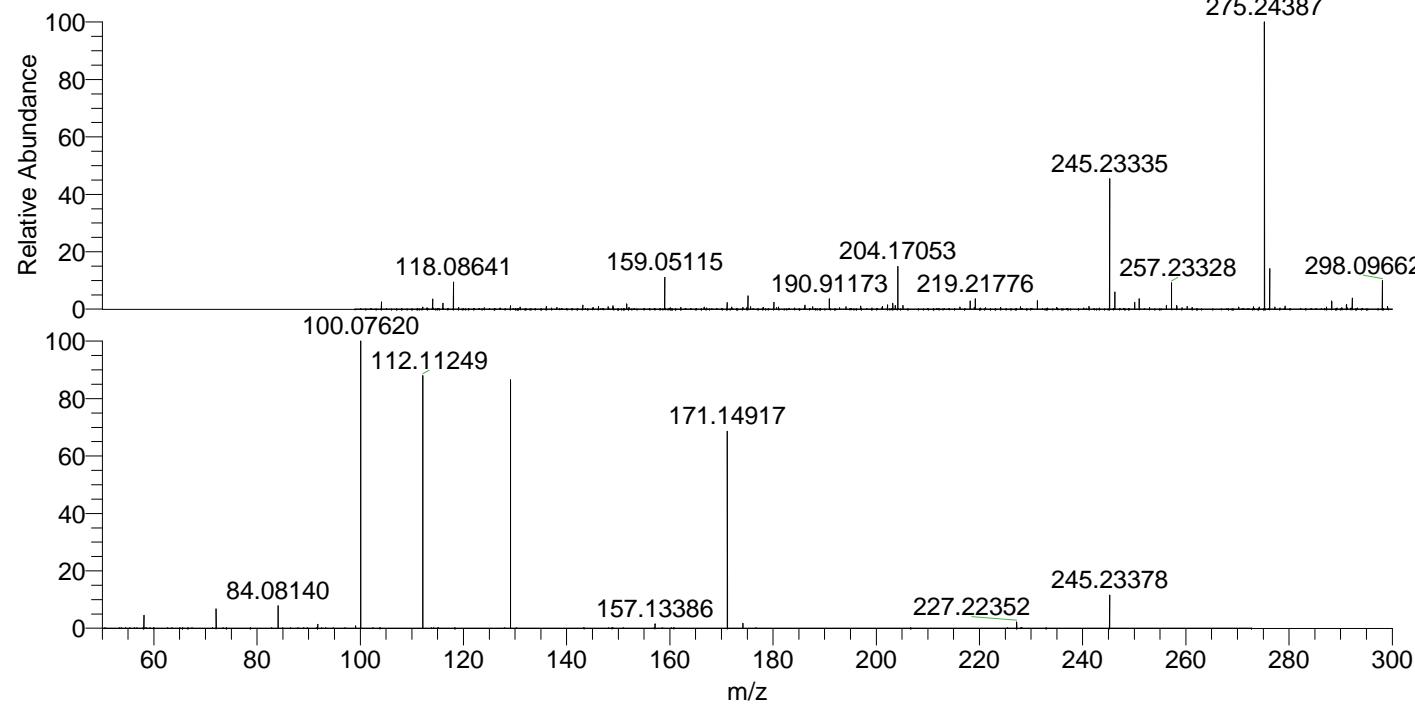
NL: 1.13E4
 Base Peak m/z= 123.12036-123.12160 F:
 FTMS + p ESI Full ms [100.00-1500.00]
 MS Apotteri

NL: 5.98E5
 Base Peak m/z= 50.00000-1500.00000 F:
 FTMS + p ESI d Full ms2
 245.23@hcd35.00 [50.00-270.00] MS
 Apotteri

Apotteri#473-491 RT: 1.16-1.21 AV: 4

F: FTMS + p ESI d Full ms2 245.23 ...

m/z	Intensity	Relative
58.06602	18225.6	4.59
72.04520	2758.6	0.69
72.08153	27680.8	6.97
84.08140	31225.9	7.87
91.75465	5441.7	1.37
99.09240	3443.0	0.87
100.07620	396944.5	100.00
112.11249	353367.3	89.02
129.13879	352475.4	88.80
157.13386	6165.7	1.55
171.14917	272494.6	68.65
174.16048	6905.8	1.74
227.22352	8475.1	2.14
245.23378	46293.8	11.66



NL: 7.76E6
 Apotteri#475 RT: 1.17
 AV: 1 T: FTMS + p ESI
 Full ms [100.00-1500.00]

NL: 3.97E5
 Apotteri#469-492 RT:
 1.16-1.21 AV: 4 F: FTMS
 + p ESI d Full ms2
 245.23@hcd35.00
 [50.00-270.00]