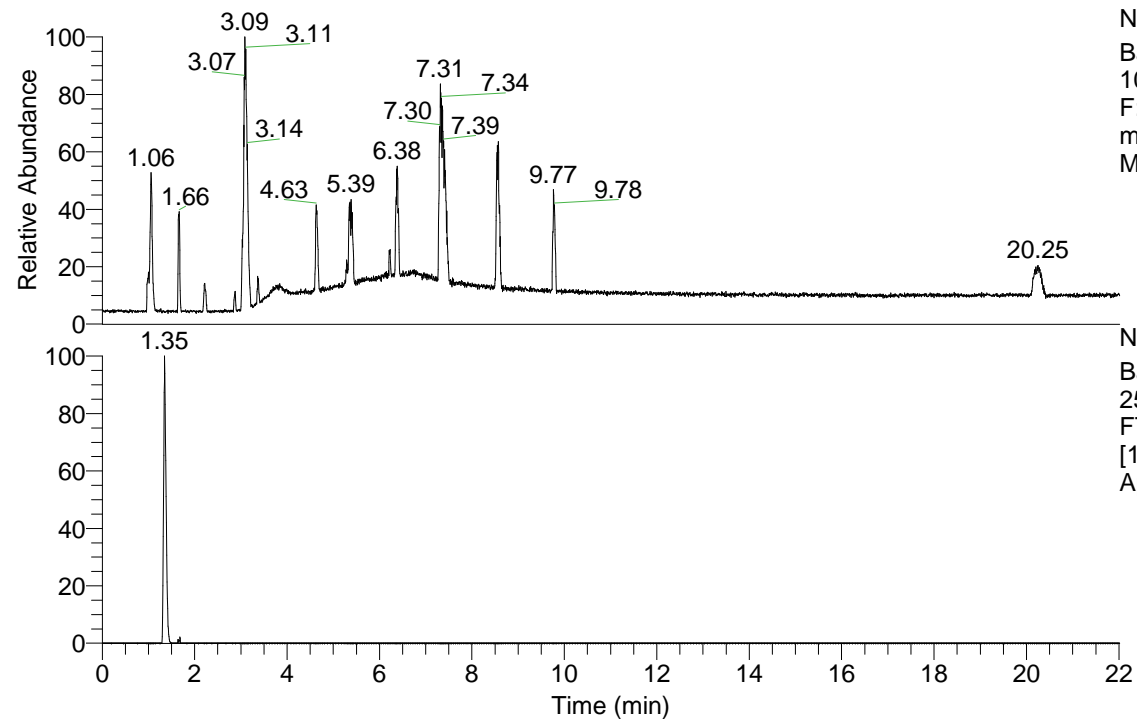


RT: 0.00 - 22.01



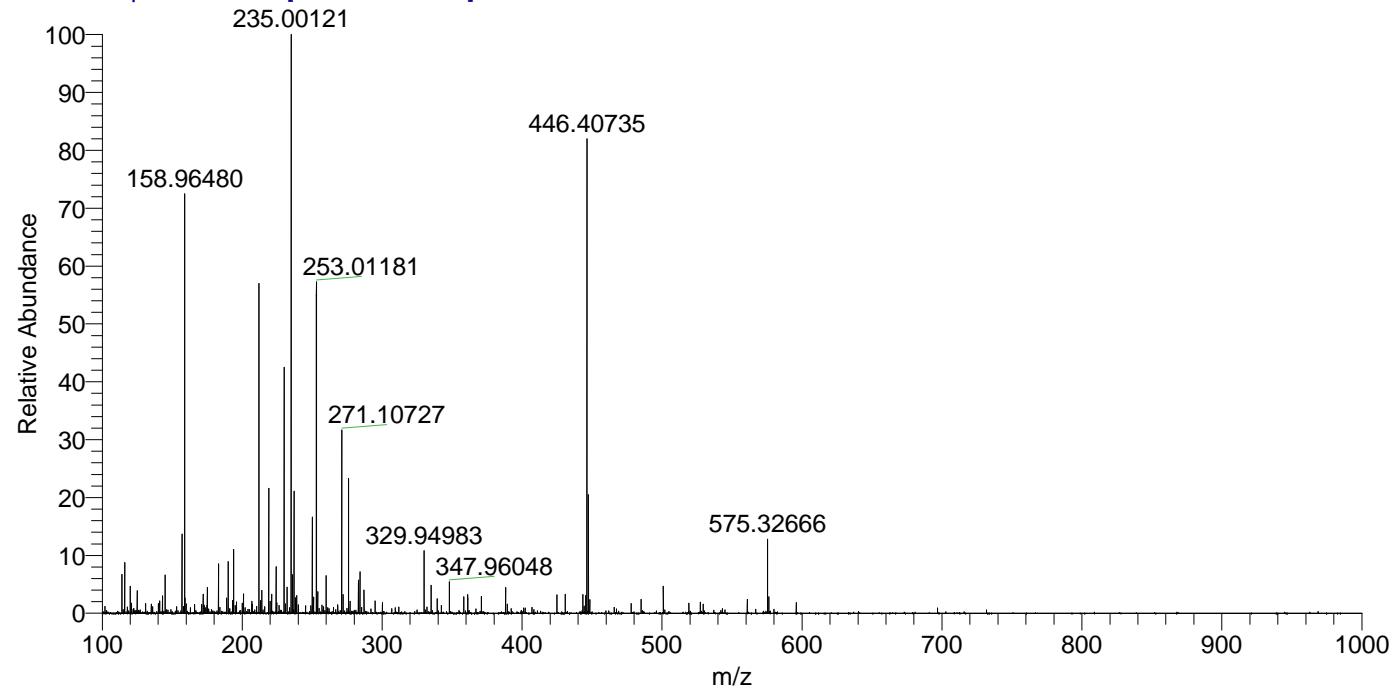
NL: 1.69E8
 Base Peak m/z= 100.00000-1500.00000
 F: FTMS + p ESI Full ms [100.00-1500.00]
 MS Apotteri_HDX

Apotteri_HDX#207 RT: 1.35
 T: FTMS + p ESI Full ms [100.00-1500.00]
 m/z= 250.00000-251.00000

m/z	Intensity	Relative	Delta (ppm)	Composition
250.13155	1215634.8	100.00	-1.84	C ₉ H ₁₀ ² H ₅ O ₅ N ₃
			4.35	C ₉ H ₈ ² H ₆ O ₅ N ₃

NL: 1.22E6
 Base Peak m/z= 250.12976-250.13226 F:
 FTMS + p ESI Full ms [100.00-1500.00] MS
 Apotteri_HDX

Apotteri_HDX #207 RT: 1.35 AV: 1 NL: 7.26E6
 T: FTMS + p ESI Full ms [100.00-1500.00]



Apotteri_HDX #207 RT: 1.35 AV: 1 NL: 4.16E6
 T: FTMS + p ESI Full ms [100.00-1500.00]

