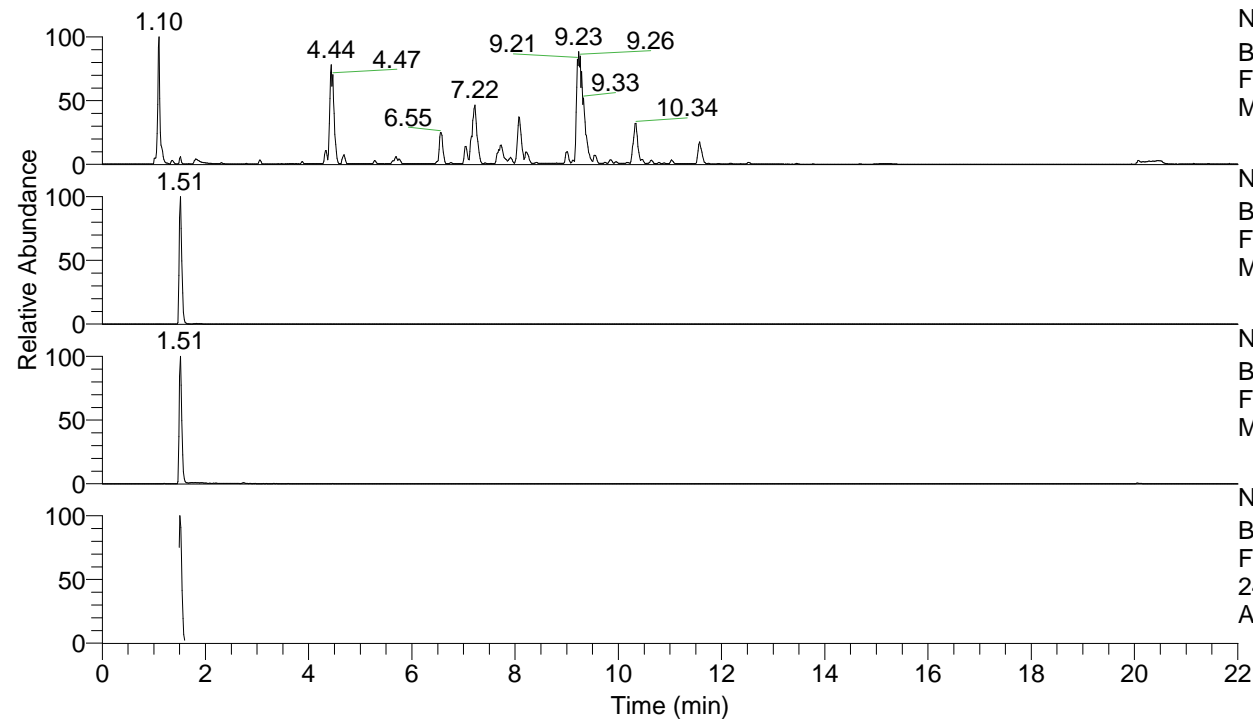


RT: 0.00 - 22.00



NL: 1.25E8
 Base Peak m/z= 100.00000-1500.00000 F:
 FTMS + p ESI Full ms [100.00-1500.00]
 MS Apotteri

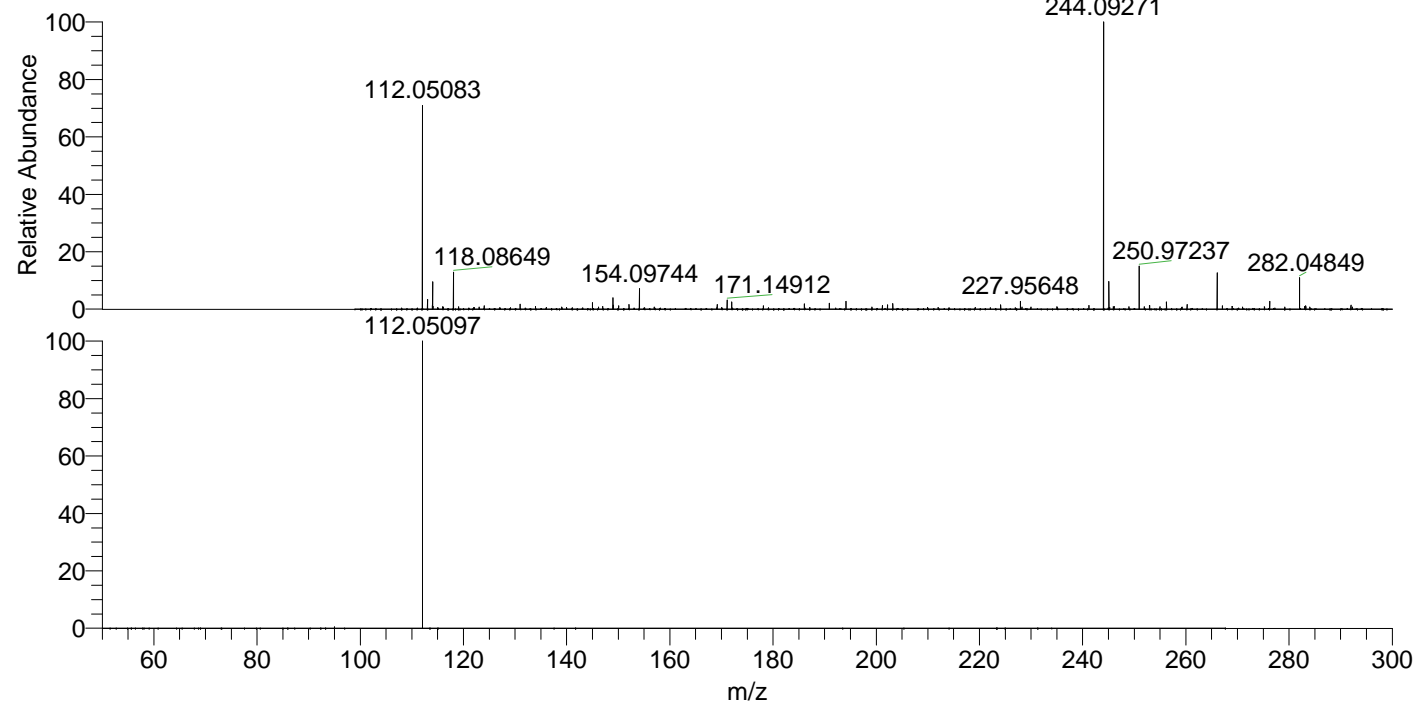
NL: 3.31E6
 Base Peak m/z= 244.09213-244.09457 F:
 FTMS + p ESI Full ms [100.00-1500.00]
 MS Apotteri

NL: 2.44E6
 Base Peak m/z= 112.05053-112.05165 F:
 FTMS + p ESI Full ms [100.00-1500.00]
 MS Apotteri

NL: 2.69E6
 Base Peak m/z= 50.00000-1500.00000 F:
 FTMS + p ESI d Full ms2
 244.09@hcd35.00 [50.00-265.00] MS
 Apotteri

Apotteri#604-627 RT: 1.49-1.55 AV: 5
 F: FTMS + p ESI d Full ms2 244.09@h ...
 m/z= 50.00000-1000.00000

m/z	Intensity	Relative
112.05097	1985513.6	100.00



NL: 3.23E6
 Apotteri#613 RT: 1.51
 AV: 1 T: FTMS + p ESI
 Full ms [100.00-1500.00]

NL: 1.96E6
 Apotteri#595-631 RT:
 1.49-1.55 AV: 5 F: FTMS
 + p ESI d Full ms2
 244.09@hcd35.00
 [50.00-265.00]