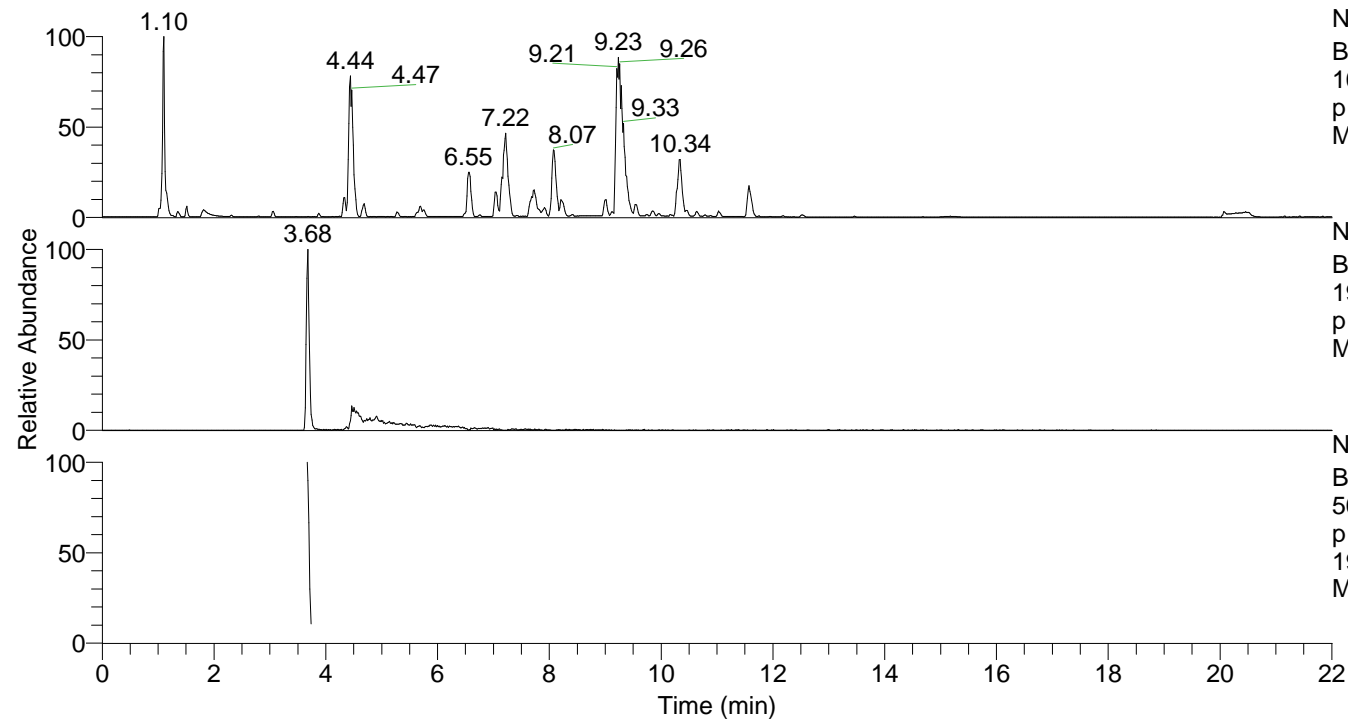


RT: 0.00 - 22.00



NL: 1.25E8
 Base Peak m/z=
 100.00000-1500.00000 F: FTMS +
 p ESI Full ms [100.00-1500.00]
 MS Apotteri

NL: 7.85E5
 Base Peak m/z=
 195.11237-195.11433 F: FTMS +
 p ESI Full ms [100.00-1500.00]
 MS Apotteri

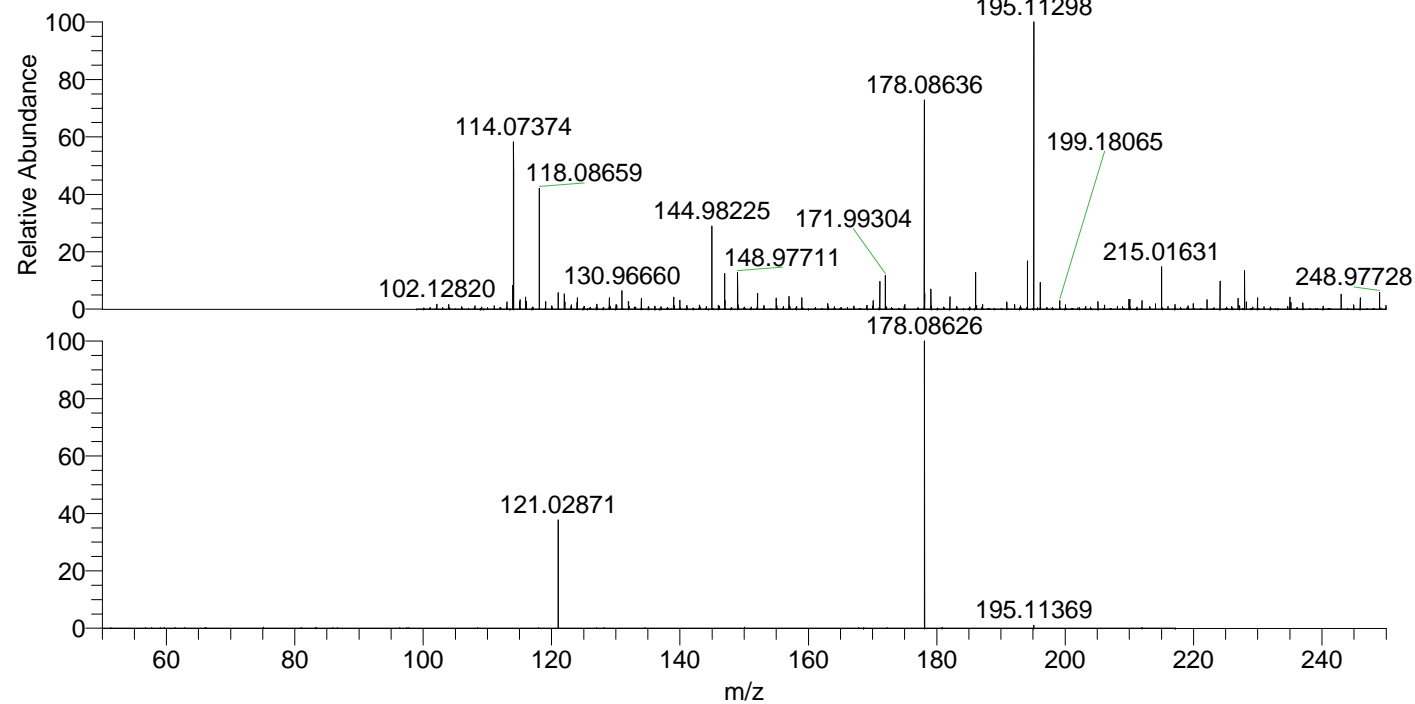
NL: 6.03E5
 Base Peak m/z=
 50.00000-1500.00000 F: FTMS +
 p ESI d Full ms2
 195.11@hcd35.00 [50.00-215.00]
 MS Apotteri

Apotteri#1474-1491 RT: 3.67-3.71 AV: 4

F: FTMS + p ESI d Full ms2 195.11 ...

m/z = 50.00000-1000.00000

m/z	Intensity	Relative
121.02871	156907.1	38.88
178.08626	403588.9	100.00
195.11369	4301.0	1.07



NL: 7.83E5
 Apotteri#1477 RT: 3.68
 AV: 1 T: FTMS + p ESI
 Full ms [100.00-1500.00]

NL: 4.02E5
 Apotteri#1470-1494 RT:
 3.67-3.71 AV: 4 F: FTMS
 + p ESI d Full ms2
 195.11@hcd35.00
 [50.00-215.00]