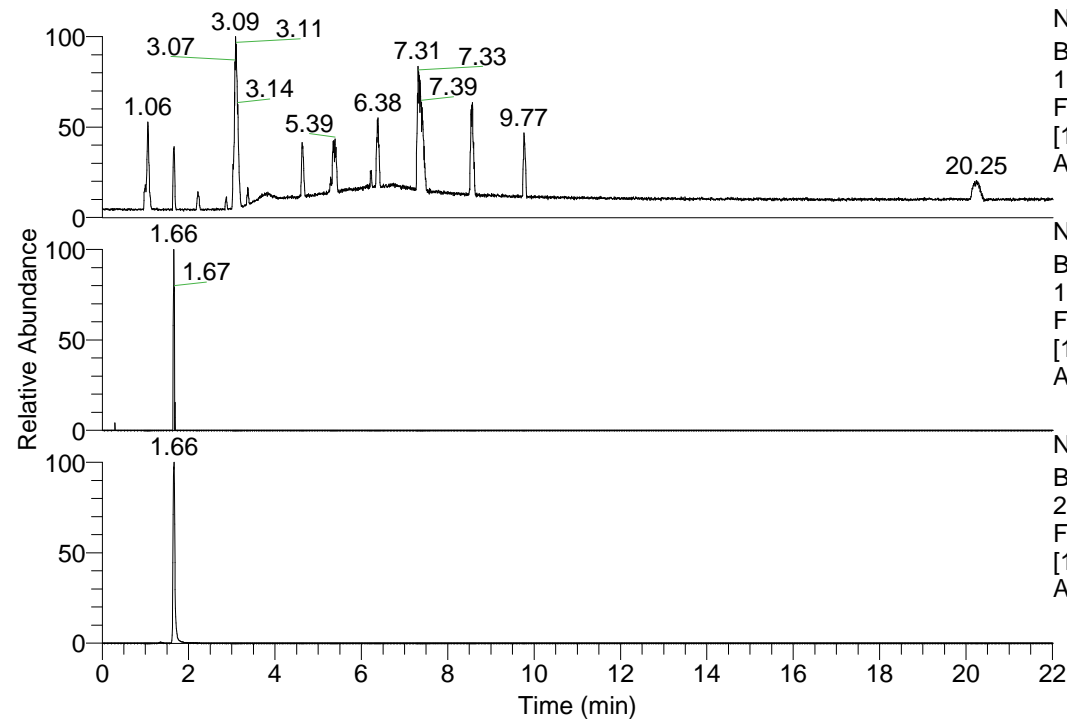


RT: 0.00 - 22.01



NL: 1.69E8
 Base Peak m/z=
 100.00000-1500.00000 F:
 FTMS + p ESI Full ms
 [100.00-1500.00] MS
 Apotteri_HDX

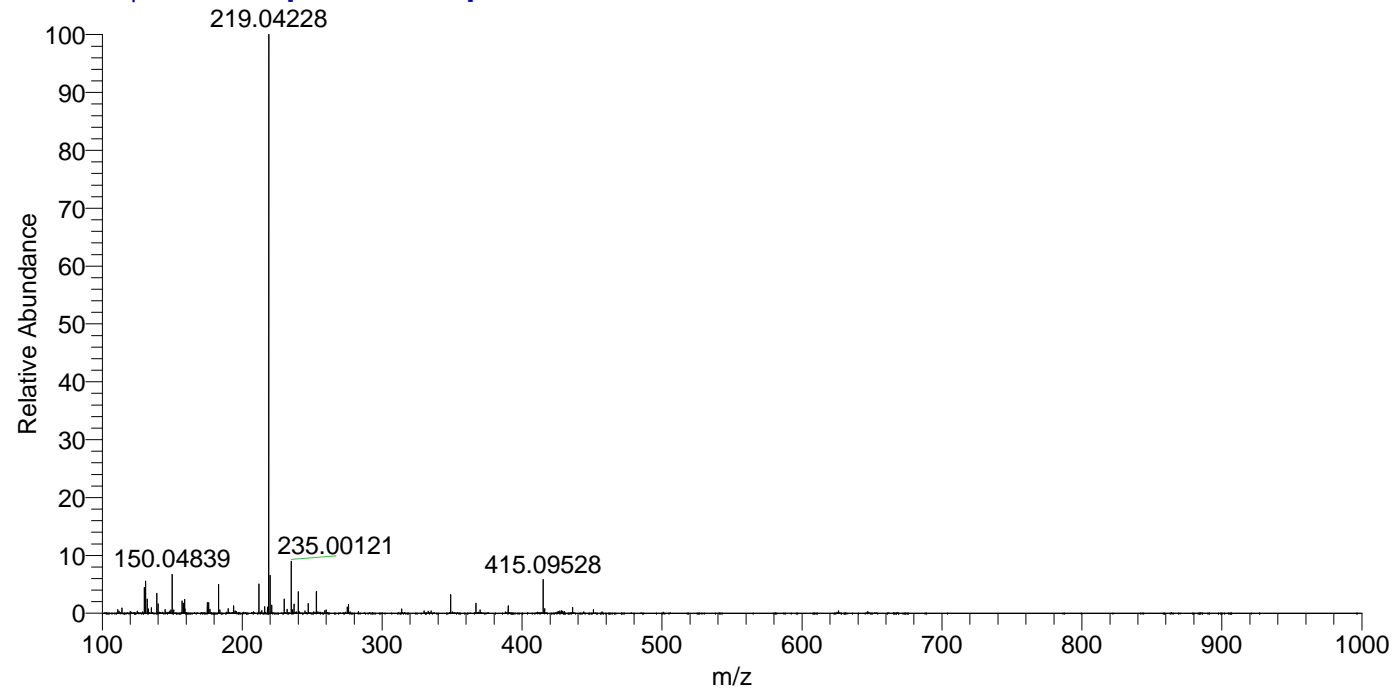
NL: 4.03E4
 Base Peak m/z=
 198.06522-198.06720 F:
 FTMS + p ESI Full ms
 [100.00-1500.00] MS
 Apotteri_HDX

NL: 6.61E7
 Base Peak m/z=
 219.04078-219.04298 F:
 FTMS + p ESI Full ms
 [100.00-1500.00] MS
 Apotteri_HDX

Apotteri_HDX#254 RT: 1.66
 T: FTMS + p ESI Full ms [100.00-1500.00]
 m/z= 219.00000-220.00000

m/z	Intensity	Relative	Delta (ppm)	Composition
219.04228	63526932.0	100.00	-2.73	C ₆ H ₆ ² H ₃ O ₇ Na
			4.34	C ₆ H ₄ ² H ₄ O ₇ Na
			-9.79	C ₆ H ₈ ² H ₂ O ₇ Na
			11.41	C ₆ H ₂ ² H ₅ O ₇ Na
			-16.86	C ₆ H ₁₀ ² H ₀ O ₇ Na
			18.48	C ₆ ² H ₆ O ₇ Na
			-23.93	C ₆ H ₁₂ O ₇ Na

Apotteri_HDX #254 RT: 1.66 AV: 1 NL: 6.24E7
 T: FTMS + p ESI Full ms [100.00-1500.00]



Apotteri_HDX #254 RT: 1.66 AV: 1 NL: 6.24E7
 T: FTMS + p ESI Full ms [100.00-1500.00]

