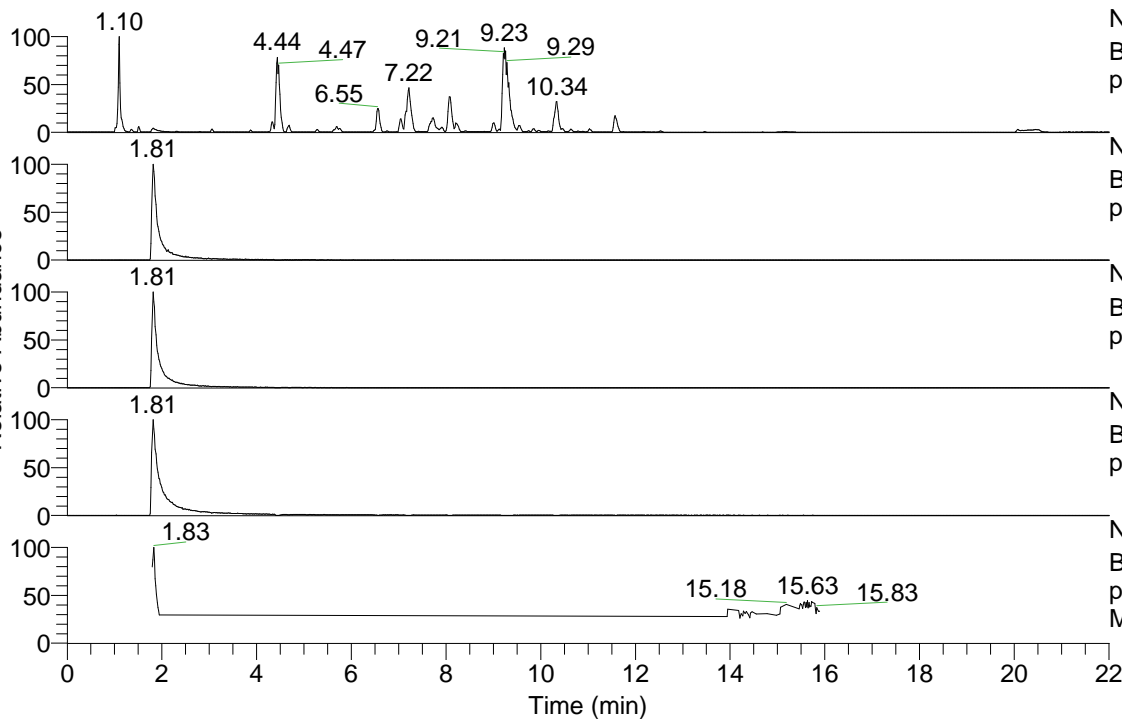


RT: 0.00 - 22.00



NL: 1.25E8
 Base Peak m/z= 100.00000-1500.00000 F: FTMS + p ESI Full ms [100.00-1500.00] MS Apotteri

NL: 1.12E6
 Base Peak m/z= 193.03385-193.03579 F: FTMS + p ESI Full ms [100.00-1500.00] MS Apotteri

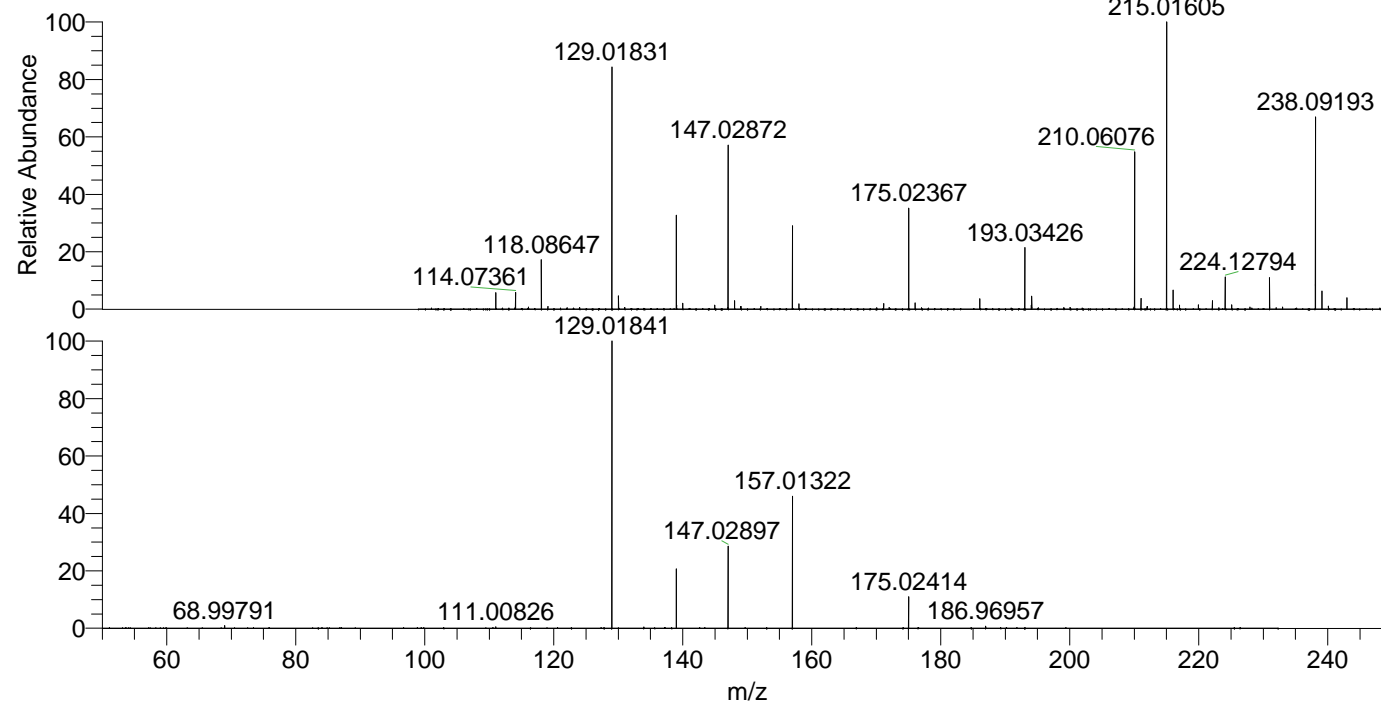
NL: 2.96E6
 Base Peak m/z= 210.06033-210.06243 F: FTMS + p ESI Full ms [100.00-1500.00] MS Apotteri

NL: 5.45E6
 Base Peak m/z= 215.01569-215.01785 F: FTMS + p ESI Full ms [100.00-1500.00] MS Apotteri

NL: 2.10E5
 Base Peak m/z= 50.00000-1500.00000 F: FTMS + p ESI d Full ms2 210.06@hcd35.00 [50.00-230.00] MS Apotteri

Apotteri#726-761 RT: 1.80-1.88 AV: 7
 F: FTMS + p ESI d Full ms2 210.06 ...
 m/z= 50.00000-1000.00000

m/z	Intensity	Relative
68.99791	1637.1	1.09
111.00826	898.5	0.60
129.01841	150233.2	100.00
139.00266	32138.6	21.39
147.02889	43815.7	29.17
157.01316	70628.1	47.01
175.02409	16215.3	10.79
186.96957	1229.9	0.82



NL: 5.19E6
 Apotteri#733 RT: 1.81
 AV: 1 T: FTMS + p ESI Full ms [100.00-1500.00]

NL: 1.40E5
 Apotteri#723-768 RT: 1.80-1.90 AV: 8 F: FTMS + p ESI d Full ms2 210.06@hcd35.00 [50.00-230.00]