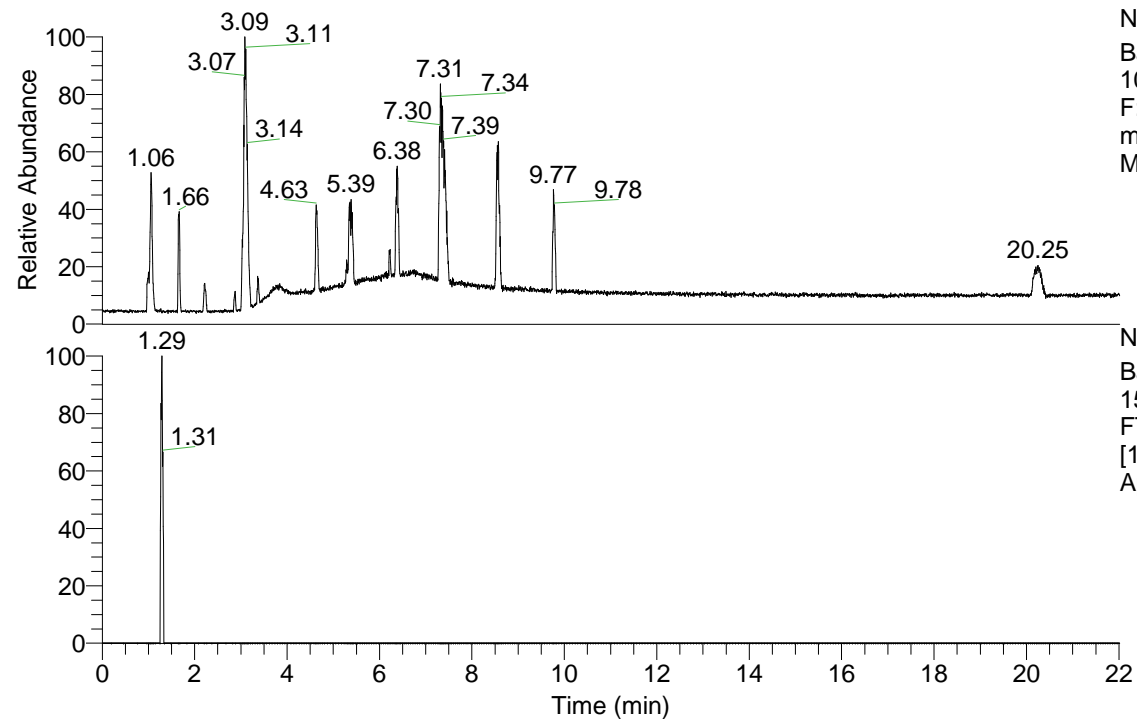


RT: 0.00 - 22.01



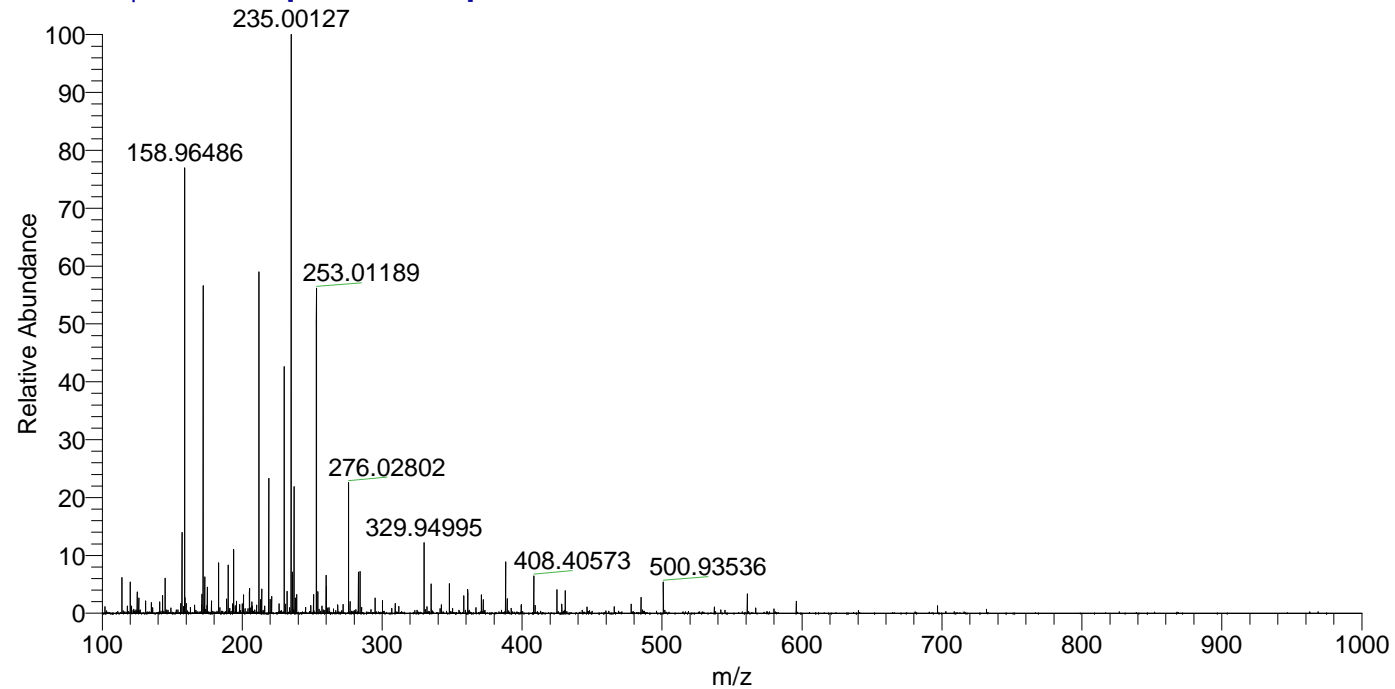
NL: 1.69E8
 Base Peak m/z= 100.00000-1500.00000
 F: FTMS + p ESI Full ms [100.00-1500.00]
 MS Apotteri_HDX

Apotteri_HDX#198 RT: 1.29
 T: FTMS + p ESI Full ms [100.00-1500.00]
 m/z= 157.00000-158.00000

m/z	Intensity	Relative	Delta (ppm)	Composition
157.08440	1027814.6	100.00	-23.39	C ₅ H ² H ₅ ON ₅

NL: 8.35E4
 Base Peak m/z= 157.08782-157.08940 F:
 FTMS + p ESI Full ms [100.00-1500.00] MS
 Apotteri_HDX

Apotteri_HDX #198 RT: 1.29 AV: 1 NL: 7.34E6
 T: FTMS + p ESI Full ms [100.00-1500.00]



Apotteri_HDX #198 RT: 1.29 AV: 1 NL: 5.65E6
 T: FTMS + p ESI Full ms [100.00-1500.00]

