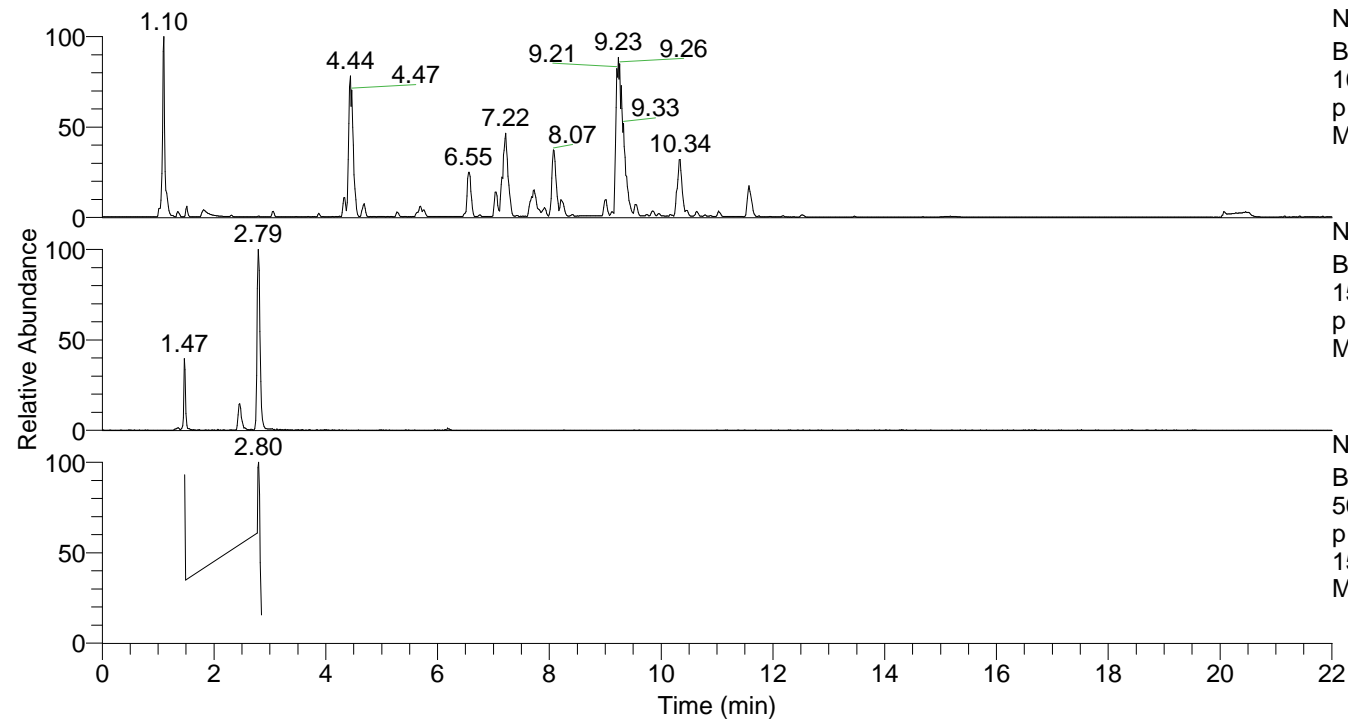


RT: 0.00 - 22.00



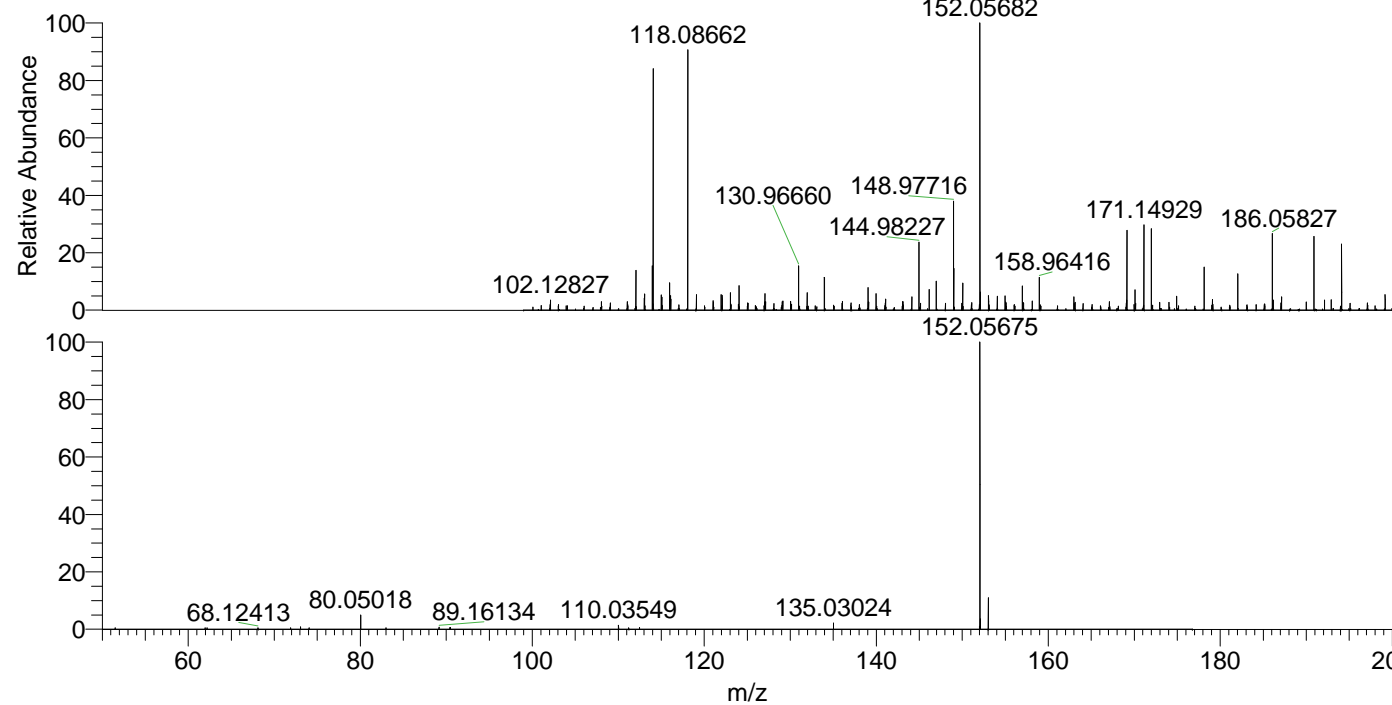
NL: 1.25E8
 Base Peak m/z=
 100.00000-1500.00000 F: FTMS +
 p ESI Full ms [100.00-1500.00]
 MS Apotteri

NL: 8.23E5
 Base Peak m/z=
 152.05647-152.05799 F: FTMS +
 p ESI Full ms [100.00-1500.00]
 MS Apotteri

NL: 3.17E5
 Base Peak m/z=
 50.00000-1500.00000 F: FTMS +
 p ESI d Full ms2
 152.06@hcd35.00 [50.00-175.00]
 MS Apotteri

Apotteri#598-603 RT: 1.48-1.49 AV: 2
 F: FTMS + p ESI d Full ms2 152.06 ...
 m/z= 50.00000-1000.00000

m/z	Intensity	Relative
68.12413	1020.3	0.53
71.91303	1004.8	0.53
73.06569	1667.9	0.87
74.04834	1076.4	0.56
80.05018	9438.7	4.95
82.99112	1064.7	0.56
89.16134	1356.9	0.71
90.44824	1127.9	0.59
90.46219	1168.4	0.61
110.03549	2753.4	1.44
111.22321	1062.0	0.56
112.48601	1237.2	0.65
135.03024	4060.6	2.13
152.01668	2175.5	1.14
152.05675	190785.5	100.00
152.10710	7151.5	3.75
153.04109	21116.5	11.07



NL: 3.22E5
 Apotteri#595 RT: 1.47
 AV: 1 T: FTMS + p ESI
 Full ms [100.00-1500.00]

NL: 1.91E5
 Apotteri#594-605 RT:
 1.48-1.49 AV: 2 F: FTMS
 + p ESI d Full ms2
 152.06@hcd35.00
 [50.00-175.00]