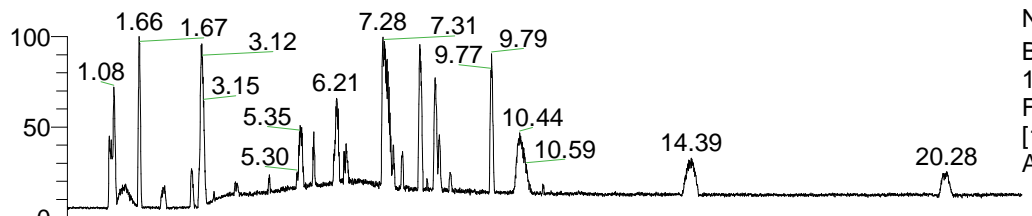


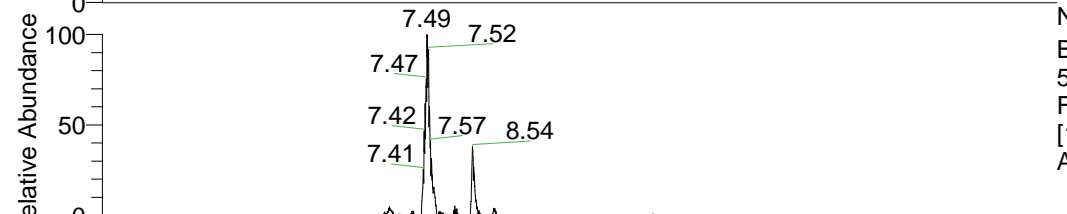
RT: 0.00 - 22.01



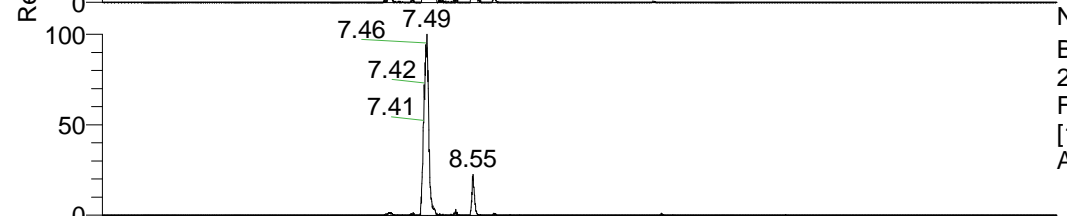
NL: 1.41E8
 Base Peak m/z=
 100.00000-1500.00000 F:
 FTMS + p ESI Full ms
 [100.00-1500.00] MS
 Aperta_HDX

Aaperta_HDX#1243 RT: 7.49
 T: FTMS + p ESI Full ms [100.00-1500.00]
 m/z= 557.00000-558.00000

m/z	Intensity	Relative	Delta (ppm)	Composition
557.50610	713843.9	100.00	1.14	C ₂₉ H ₄₃ ² H ₁₁ O ₂ N ₈
			-1.64	C ₂₉ H ₄₅ ² H ₁₀ O ₂ N ₈
			3.92	C ₂₉ H ₄₁ ² H ₁₂ O ₂ N ₈
			-4.42	C ₂₉ H ₄₇ ² H ₉ O ₂ N ₈
			6.69	C ₂₉ H ₃₉ ² H ₁₃ O ₂ N ₈
			-7.19	C ₂₉ H ₄₉ ² H ₈ O ₂ N ₈
			9.47	C ₂₉ H ₃₇ ² H ₁₄ O ₂ N ₈
			-9.97	C ₂₉ H ₅₁ ² H ₇ O ₂ N ₈

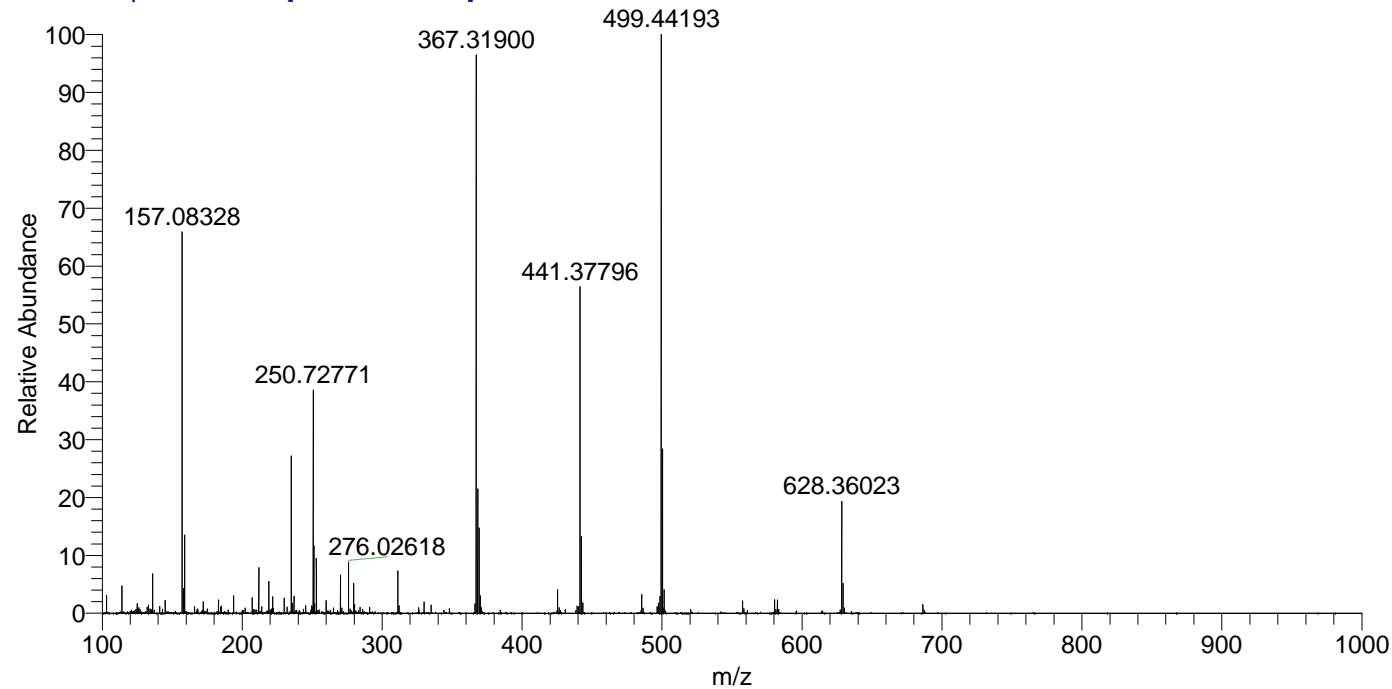


NL: 8.16E5
 Base Peak m/z=
 557.50478-557.51036 F:
 FTMS + p ESI Full ms
 [100.00-1500.00] MS
 Aperta_HDX



NL: 1.92E6
 Base Peak m/z=
 279.75943-279.76223 F:
 FTMS + p ESI Full ms
 [100.00-1500.00] MS
 Aperta_HDX

Aaperta_HDX #1243 RT: 7.49 AV: 1 NL: 3.31E7
 T: FTMS + p ESI Full ms [100.00-1500.00]



Aaperta_HDX #1243 RT: 7.49 AV: 1 NL: 7.04E5
 T: FTMS + p ESI Full ms [100.00-1500.00]

