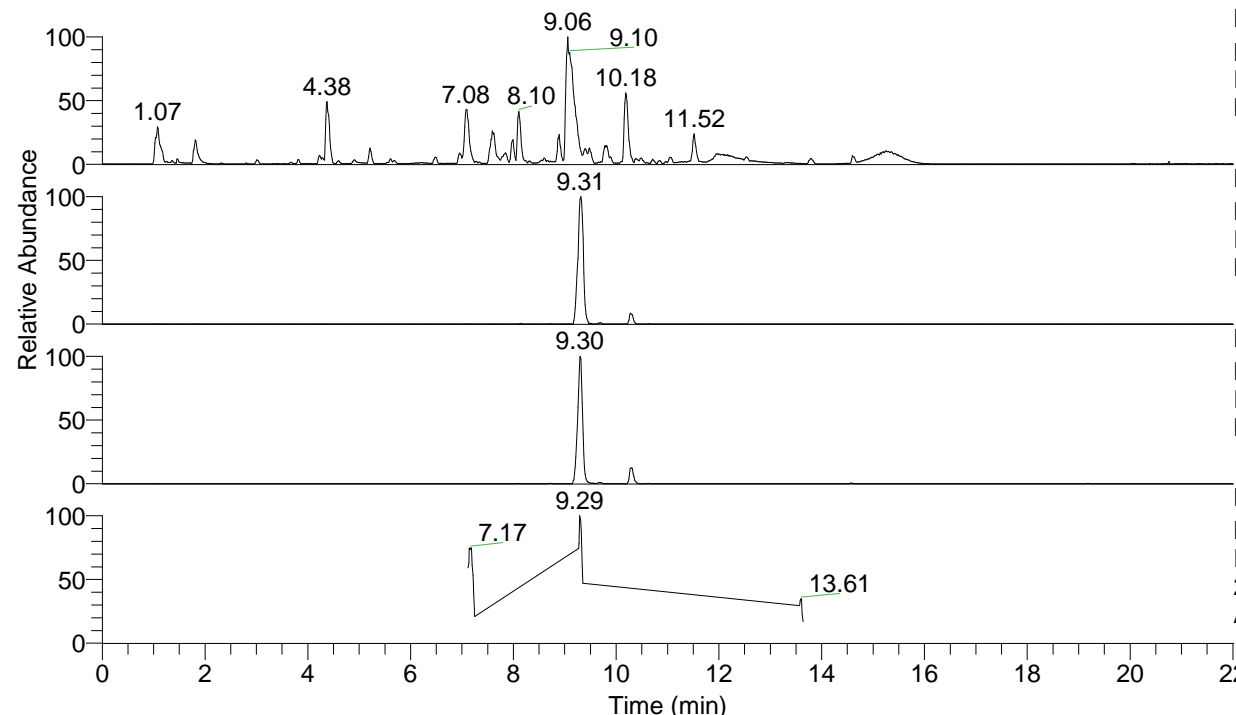


RT: 0.00 - 22.01



NL: 1.54E8
 Base Peak m/z= 100.00000-1500.00000 F:
 FTMS + p ESI Full ms [100.00-1500.00]
 MS Aperta19

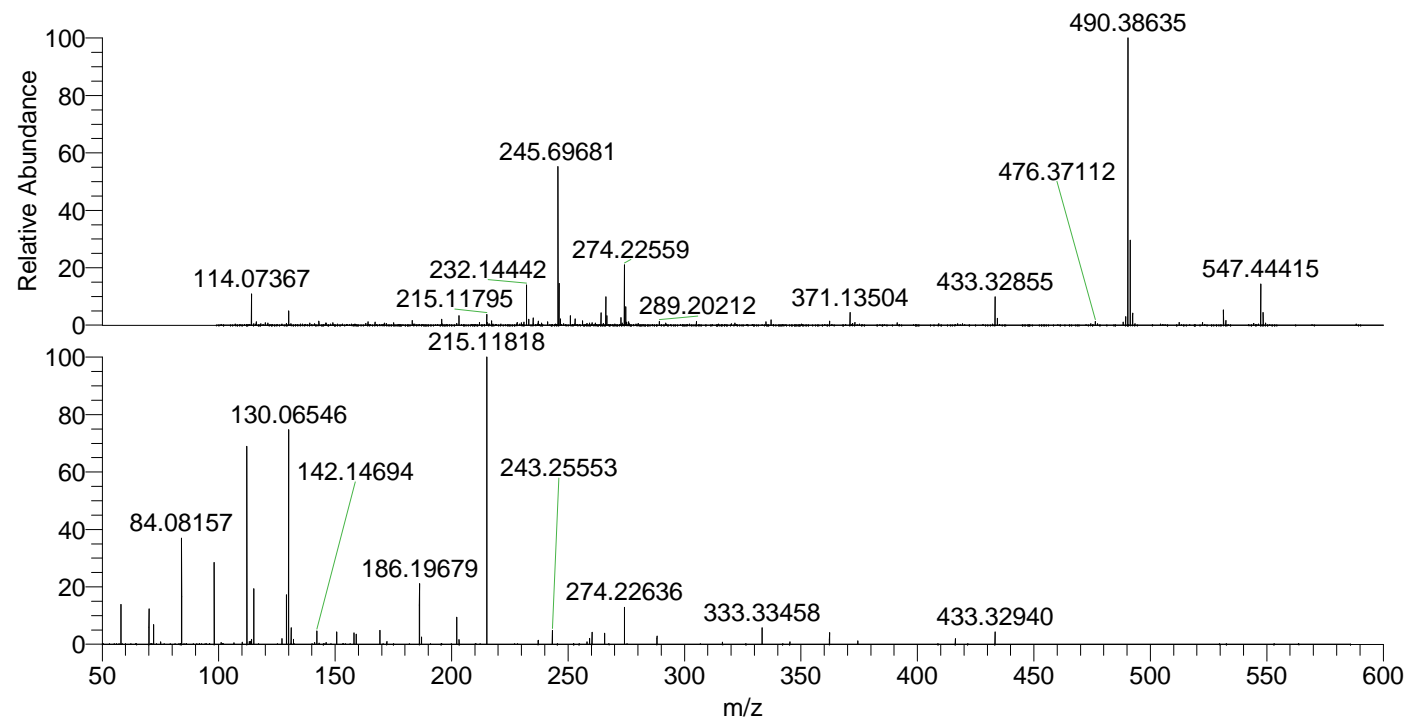
NL: 2.26E6
 Base Peak m/z= 547.44206-547.44754 F:
 FTMS + p ESI Full ms [100.00-1500.00]
 MS Aperta19

NL: 3.44E6
 Base Peak m/z= 274.22494-274.22768 F:
 FTMS + p ESI Full ms [100.00-1500.00]
 MS Aperta19

NL: 3.96E5
 Base Peak m/z= 50.00000-1500.00000 F:
 FTMS + p ESI d Full ms2
 274.20@hcd35.00 [50.00-580.00] MS
 Aperta19

Aperta19#3762-3798 RT: 9.27-9.35 AV:
 F: FTMS + p ESI d Full ms2 274.20 ...
 m/z= 50.00000-1000.00000

m/z	Intensity	Relative
58.06609	39438.2	13.72
70.06601	34833.2	12.12
72.08161	19930.9	6.93
75.09270	2230.2	0.78
84.08157	104782.8	36.45
98.09705	81615.3	28.39
101.10821	1836.8	0.64
106.61031	1540.4	0.54
110.09725	1933.8	0.67
112.11260	201362.9	70.04
113.10829	2830.3	0.98
113.61826	2978.8	1.04
114.09221	5040.9	1.75
115.12345	56317.2	19.59
127.12354	5469.8	1.90
129.13898	48862.9	17.00
130.06546	211970.9	73.73
131.11851	16448.2	5.72
132.15002	5025.5	1.75
141.13855	1806.6	0.63
142.14694	13238.1	4.60
146.16558	1683.4	0.59
150.66026	12262.0	4.27
158.06059	11301.2	3.93
159.09243	10116.2	3.52
169.17066	13833.8	4.81
172.18124	2642.1	0.92
186.19679	61738.2	21.47
187.08741	7259.5	2.53
202.19203	26970.5	9.38
203.22390	4532.9	1.58
215.11818	287493.6	100.00
237.18436	3918.4	1.36
243.25553	13832.2	4.81
258.16139	2549.7	0.89
259.25039	5790.2	2.01
260.28175	11815.7	4.11
265.71365	11380.5	3.96
274.22636	36892.4	12.83
288.17205	8213.2	2.86
316.30832	1937.7	0.67
333.33458	16242.3	5.65
345.22875	2428.5	0.84
362.25539	11575.3	4.03
374.39836	3455.7	1.20
416.30204	5674.7	1.97
433.32940	12343.2	4.29



NL: 1.55E7
 Aperta19#3781 RT: 9.31
 AV: 1 T: FTMS + p ESI
 Full lock ms
 [100.00-1500.00]

NL: 2.84E5
 Aperta19#3756-3803
 RT: 9.27-9.35 AV: 7 F:
 FTMS + p ESI d Full ms2
 274.20@hcd35.00
 [50.00-580.00]