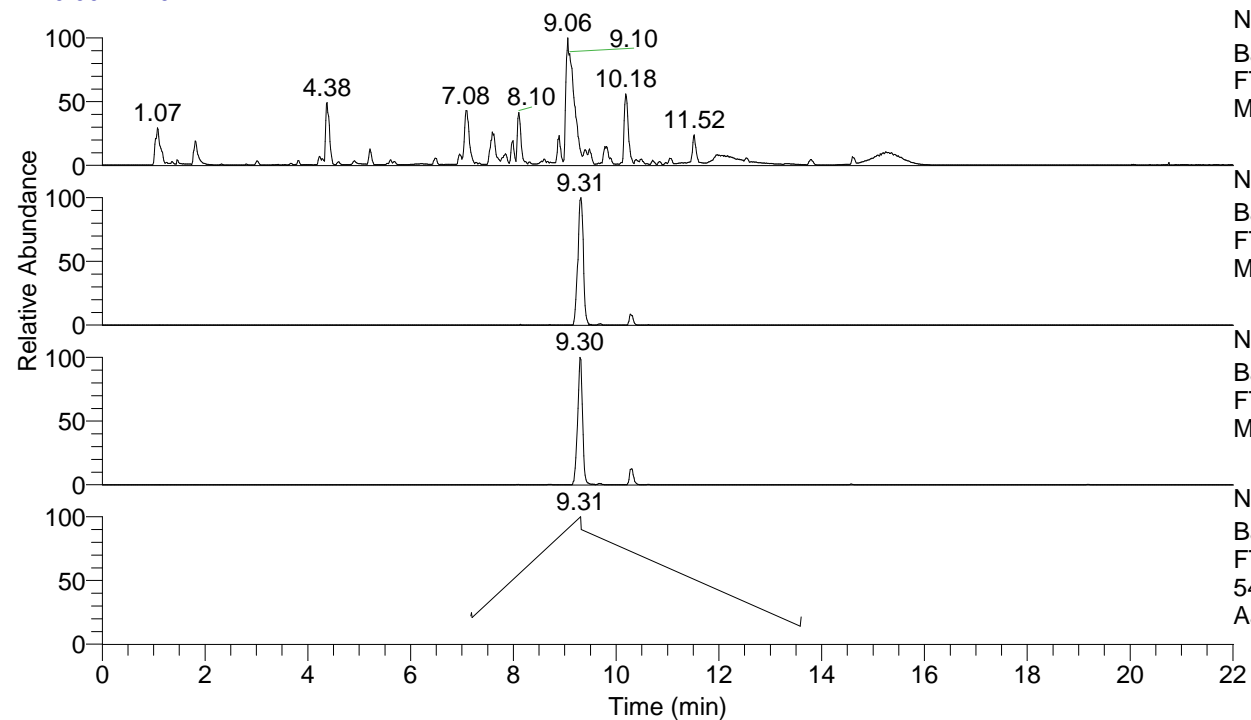


RT: 0.00 - 22.01



NL: 1.54E8
 Base Peak m/z= 100.00000-1500.00000 F:
 FTMS + p ESI Full ms [100.00-1500.00]
 MS Aperta19

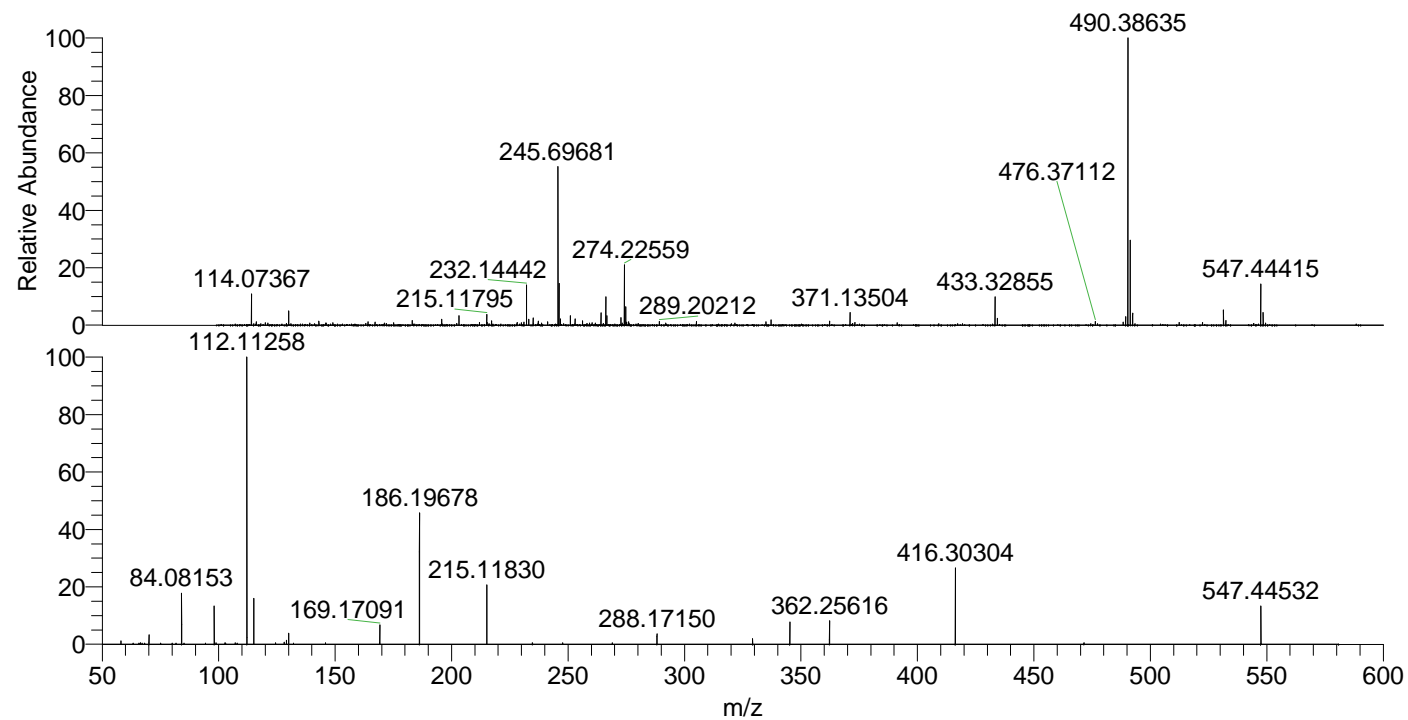
NL: 2.26E6
 Base Peak m/z= 547.44206-547.44754 F:
 FTMS + p ESI Full ms [100.00-1500.00]
 MS Aperta19

NL: 3.44E6
 Base Peak m/z= 274.22494-274.22768 F:
 FTMS + p ESI Full ms [100.00-1500.00]
 MS Aperta19

NL: 5.56E5
 Base Peak m/z= 50.00000-1500.00000 F:
 FTMS + p ESI d Full ms2
 547.40@hcd35.00 [50.00-575.00] MS
 Aperta19

Aperta19#3780-3785 RT: 9.31-9.32 AV:
 F: FTMS + p ESI d Full ms2 547.40 ...
 m/z= 50.00000-1000.00000

m/z	Intensity	Relative
58.06620	6090.2	1.20
70.06600	16956.5	3.34
84.08153	91147.3	17.94
98.09707	67386.5	13.27
102.71322	2549.3	0.50
112.11258	507959.3	100.00
115.12351	81566.3	16.06
128.10821	3871.9	0.76
129.13939	7137.5	1.41
130.06597	19522.5	3.84
169.17091	34483.2	6.79
186.19678	234058.1	46.08
215.11830	104369.6	20.55
247.72074	2677.8	0.53
268.96093	2754.4	0.54
288.17150	18485.4	3.64
329.23463	10193.4	2.01
345.22931	39471.9	7.77
362.25616	41763.0	8.22
362.29778	2826.7	0.56
416.30304	134182.1	26.42
547.44532	67445.9	13.28



NL: 1.55E7
 Aperta19#3781 RT: 9.31
 AV: 1 T: FTMS + p ESI
 Full lock ms
 [100.00-1500.00]

NL: 5.05E5
 Aperta19#3752-3799
 RT: 9.31-9.32 AV: 2 F:
 FTMS + p ESI d Full ms2
 547.40@hcd35.00
 [50.00-575.00]