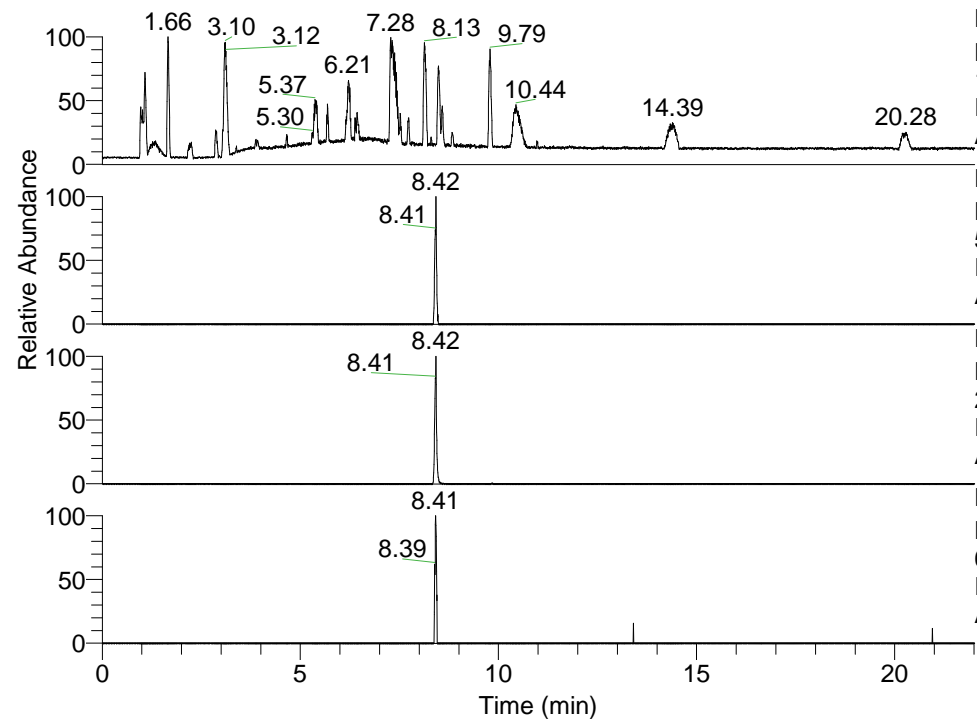


RT: 0.00 - 22.01



NL: 1.41E8
 Base Peak m/z=
 100.00000-1500.00000 F: FTMS + p
 ESI Full ms [100.00-1500.00] MS
 Aperta_HDX

NL: 6.30E5
 Base Peak m/z=
 552.48445-552.48997 F: FTMS + p
 ESI Full ms [100.00-1500.00] MS
 Aperta_HDX

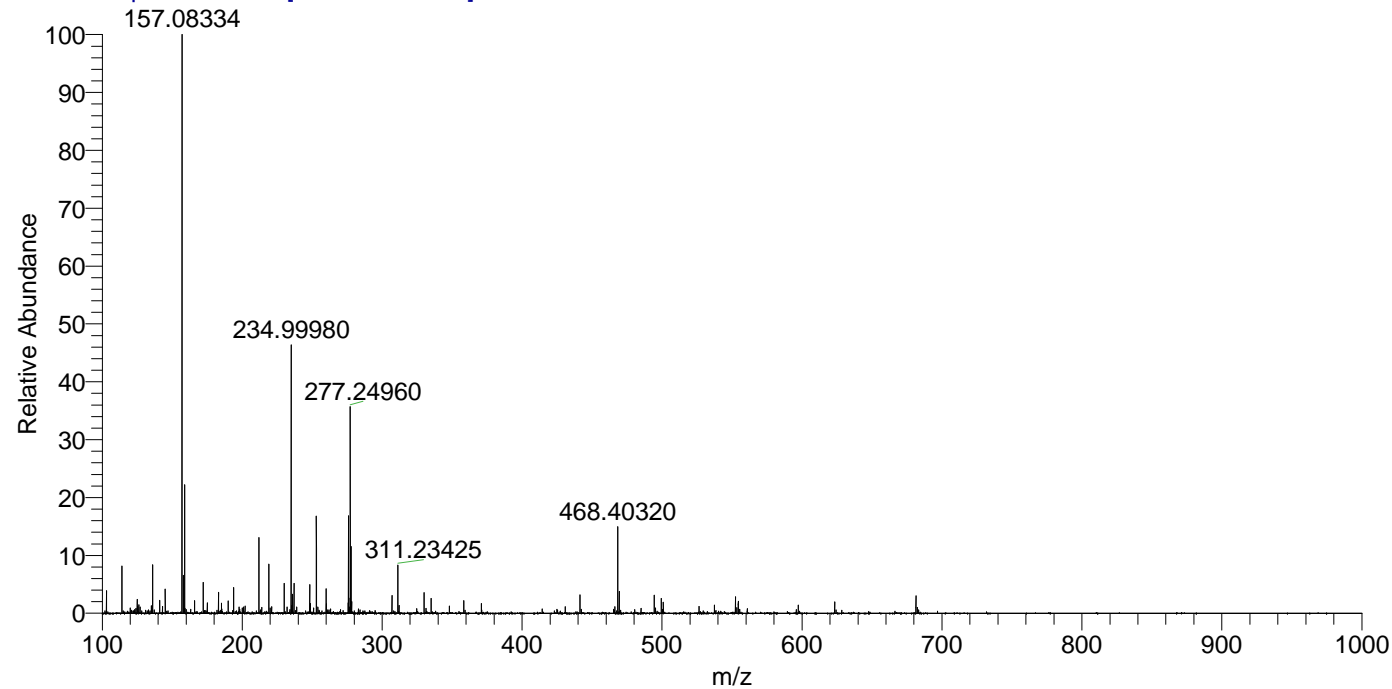
NL: 8.04E6
 Base Peak m/z=
 277.24927-277.25205 F: FTMS + p
 ESI Full ms [100.00-1500.00] MS
 Aperta_HDX

NL: 3.36E4
 Base Peak m/z=
 667.48301-667.48969 F: FTMS + p
 ESI Full ms [100.00-1500.00] MS
 Aperta_HDX

Aperta_HDX#1403 RT: 8.42
 T: FTMS + p ESI Full ms [100.00-1500.00]
 m/z= 552.00000-553.00000

m/z	Intensity	Relative	Delta (ppm)	Composition
552.48602	629721.4	100.00	-1.15	C ₃₀ H ₅₀ ² H ₆ O ₂ N ₇
			1.65	C ₃₀ H ₄₈ ² H ₇ O ₂ N ₇
			-3.96	C ₃₀ H ₅₂ ² H ₅ O ₂ N ₇
			4.45	C ₃₀ H ₄₆ ² H ₈ O ₂ N ₇
			-6.76	C ₃₀ H ₅₄ ² H ₄ O ₂ N ₇
			7.25	C ₃₀ H ₄₄ ² H ₉ O ₂ N ₇
			-9.56	C ₃₀ H ₅₆ ² H ₃ O ₂ N ₇

Aperta_HDX #1403 RT: 8.42 AV: 1 NL: 2.20E7
 T: FTMS + p ESI Full ms [100.00-1500.00]



Aperta_HDX #1403 RT: 8.42 AV: 1 NL: 6.21E5
 T: FTMS + p ESI Full ms [100.00-1500.00]

