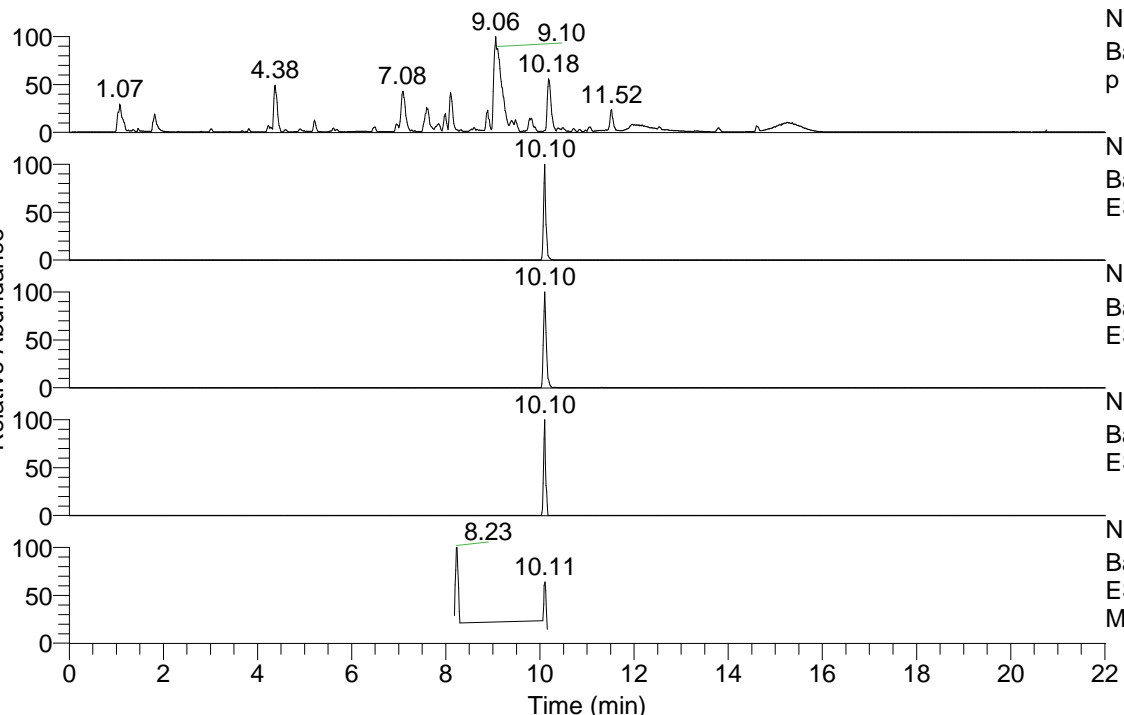


RT: 0.00 - 22.01



NL: 1.54E8
 Base Peak m/z= 100.00000-1500.00000 F: FTMS + p ESI Full ms [100.00-1500.00] MS Aperta19

NL: 1.49E6
 Base Peak m/z= 546.44682-546.45228 F: FTMS + p ESI Full ms [100.00-1500.00] MS Aperta19

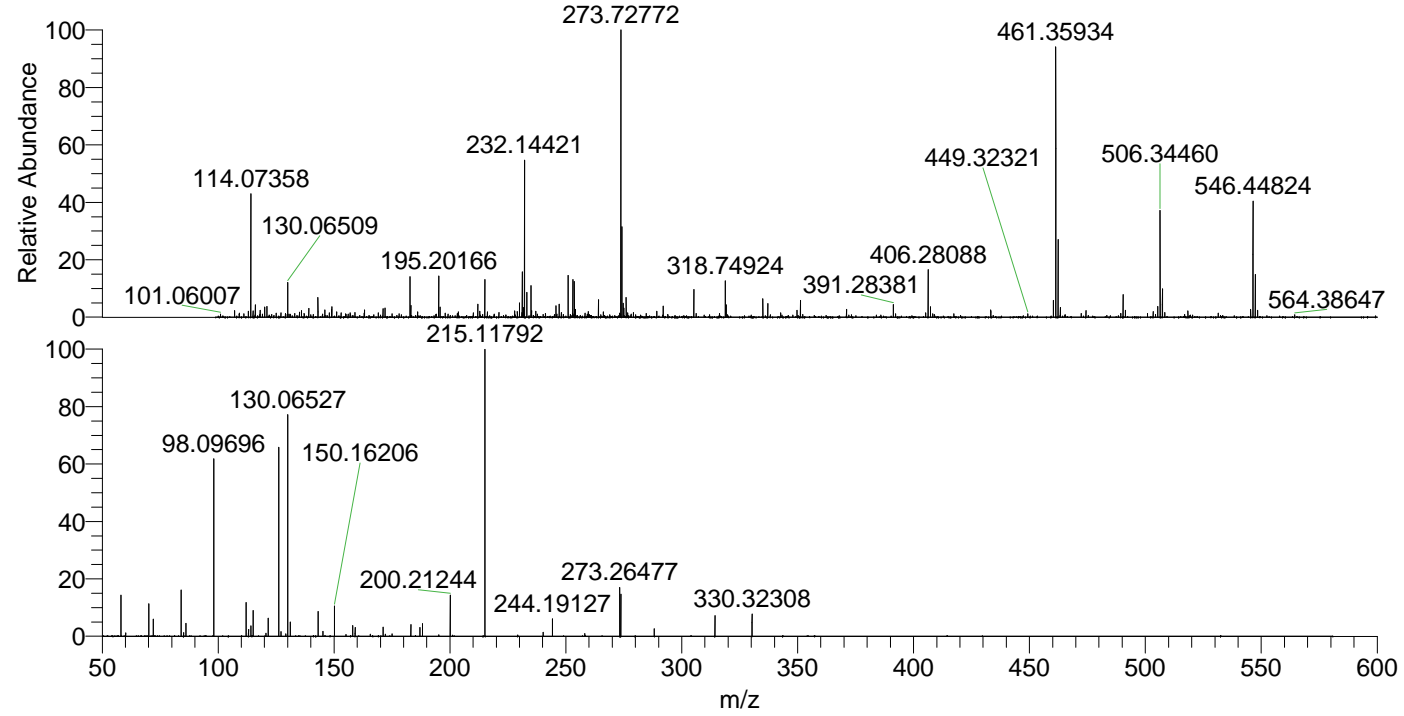
NL: 3.49E6
 Base Peak m/z= 273.72732-273.73006 F: FTMS + p ESI Full ms [100.00-1500.00] MS Aperta19

NL: 2.03E5
 Base Peak m/z= 660.43911-660.44571 F: FTMS + p ESI Full ms [100.00-1500.00] MS Aperta19

NL: 6.39E5
 Base Peak m/z= 50.00000-1500.00000 F: FTMS + p ESI d Full ms2 273.71@hcd35.00 [50.00-575.00] MS Aperta19

Aperta19#4084-4113 RT: 10.06-10.14
 F: FTMS + p ESI d Full ms2 273.71 ...
 m/z= 50.00000-1000.00000

m/z	Intensity	Relative
58.06599	39428.1	14.18
60.08163	3203.4	1.15
70.06591	31298.5	11.25
72.08159	16934.7	6.09
84.08148	44501.4	16.00
85.07667	3720.4	1.34
86.06065	1634.2	0.59
86.09706	12577.3	4.52
98.09696	171773.0	61.77
112.11247	33118.1	11.91
113.10778	6689.1	2.41
114.09188	9958.5	3.58
115.12343	25359.8	9.12
120.62558	2832.4	1.02
121.63359	17479.7	6.29
126.12802	182280.8	65.55
127.12330	4423.6	1.59
129.13885	2210.8	0.79
130.06527	212806.4	76.52
131.11803	14184.3	5.10
143.15455	23898.9	8.59
145.16996	4923.2	1.77
150.16206	29698.8	10.68
155.15449	1690.9	0.61
158.06033	10441.8	3.75
159.09212	8700.5	3.13
165.66533	1872.5	0.67
171.18569	8773.5	3.15
172.18092	2118.5	0.76
175.06347	1464.7	0.53
175.08681	2230.3	0.80
183.18584	11156.2	4.01
187.08707	8494.8	3.05
188.17603	12255.8	4.41
195.20235	1482.8	0.53
200.21244	40315.2	14.50
215.11792	278093.6	100.00
240.24399	3860.5	1.39
244.19127	16885.4	6.07
258.16040	2546.5	0.92
273.26477	46797.4	16.83
273.72805	40391.5	14.52
288.17092	7231.6	2.60
314.32769	20037.1	7.21
330.32308	21860.5	7.86



NL: 3.46E6
 Aperta19#4099 RT: 10.10 AV: 1 T: FTMS + p ESI Full lock ms [100.00-1500.00]

NL: 2.76E5
 Aperta19#4082-4119 RT: 10.06-10.14 AV: 6 F: FTMS + p ESI d Full ms2 273.71@hcd35.00 [50.00-575.00]