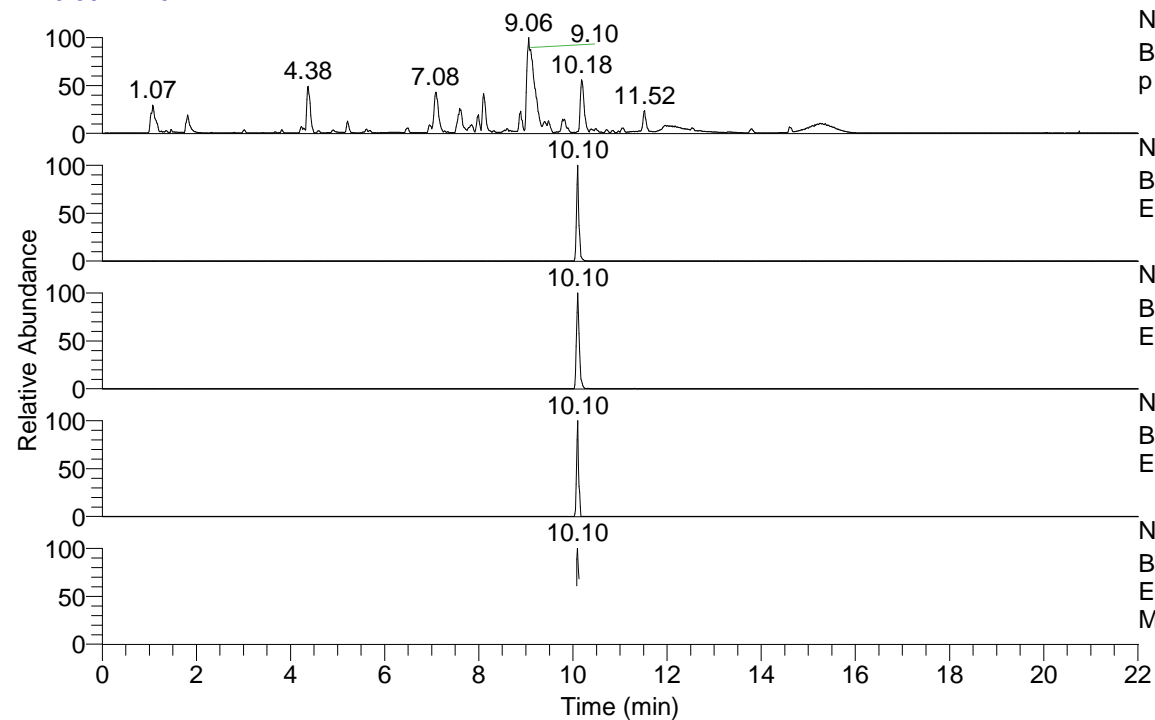


RT: 0.00 - 22.01



NL: 1.54E8

Base Peak m/z= 100.00000-1500.00000 F: FTMS + p ESI Full ms [100.00-1500.00] MS Aperta19

NL: 1.49E6

Base Peak m/z= 546.44682-546.45228 F: FTMS + p ESI Full ms [100.00-1500.00] MS Aperta19

NL: 3.49E6

Base Peak m/z= 273.72732-273.73006 F: FTMS + p ESI Full ms [100.00-1500.00] MS Aperta19

NL: 2.03E5

Base Peak m/z= 660.43911-660.44571 F: FTMS + p ESI Full ms [100.00-1500.00] MS Aperta19

NL: 3.36E5

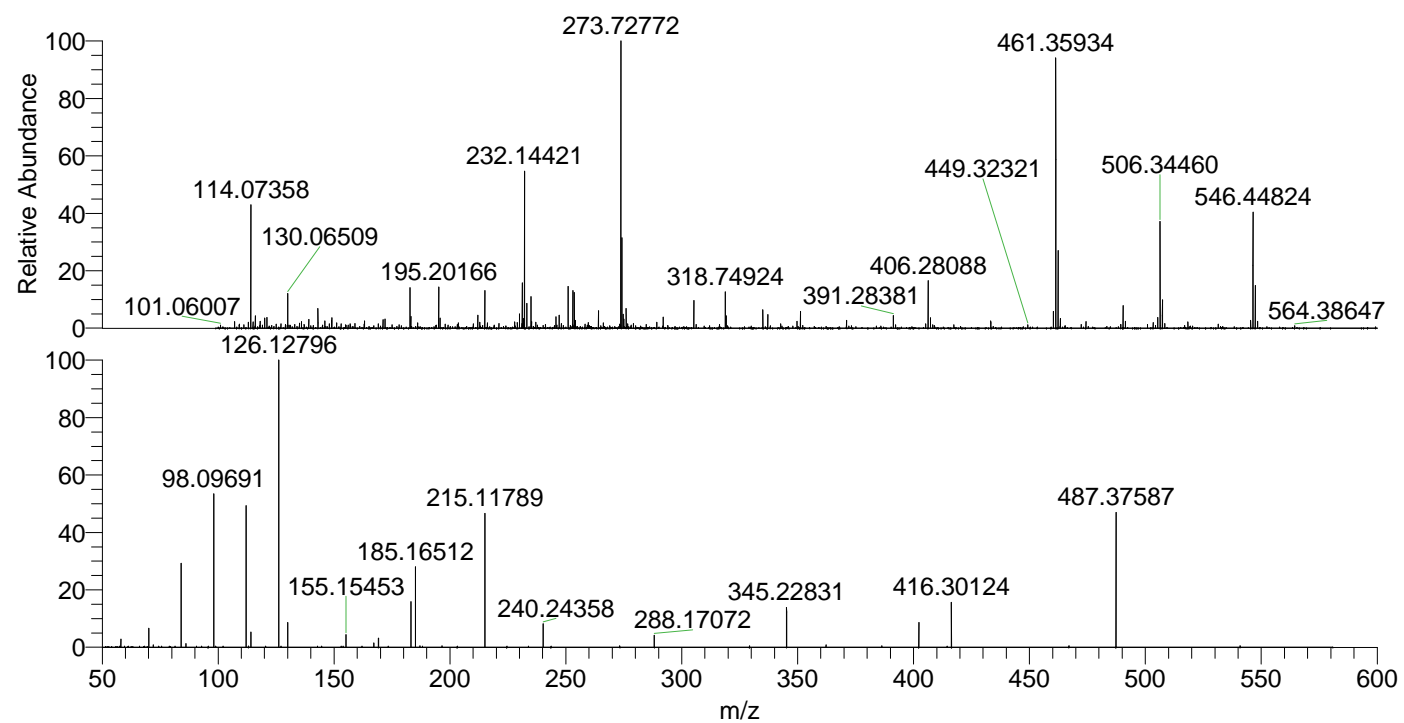
Base Peak m/z= 50.00000-1500.00000 F: FTMS + p ESI d Full ms2 546.41@hcd35.00 [50.00-575.00] MS Aperta19

Aperta19#4091-4110 RT: 10.08-10.13

F: FTMS + p ESI d Full ms2 546.41 ...

m/z= 50.00000-1000.00000

m/z	Intensity	Relative
58.06601	6839.9	2.75
70.06593	16300.7	6.56
72.08153	2061.4	0.83
84.08147	71732.1	28.87
86.06083	3037.4	1.22
98.09691	130297.5	52.44
112.11244	121179.8	48.77
114.09178	12906.6	5.19
126.12796	248465.6	100.00
130.06553	21092.5	8.49
155.15453	10811.3	4.35
167.15459	3803.9	1.53
169.16996	7910.3	3.18
183.18580	38791.1	15.61
185.16512	69810.2	28.10
187.08762	1308.6	0.53
215.11789	113817.6	45.81
240.24358	19936.1	8.02
288.17072	10132.7	4.08
345.22831	34199.1	13.76
362.25514	2119.4	0.85
386.28908	1341.1	0.54
402.28632	22069.2	8.88
416.30124	38299.3	15.41
487.37587	114671.8	46.15



NL: 3.46E6

Aperta19#4099 RT: 10.10 AV: 1 T: FTMS + p ESI Full lock ms [100.00-1500.00]

NL: 2.44E5

Aperta19#4087-4112 RT: 10.08-10.13 AV: 5 F: FTMS + p ESI d Full ms2 546.41@hcd35.00 [50.00-575.00]