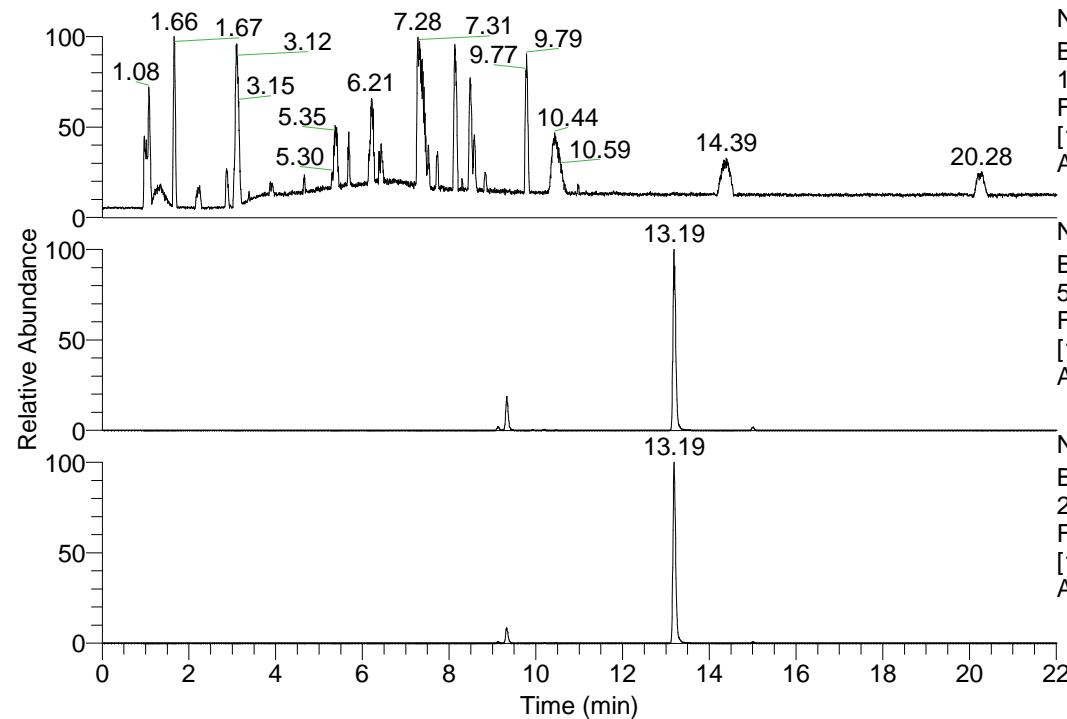


RT: 0.00 - 22.01



NL: 1.41E8  
 Base Peak m/z=  
 100.00000-1500.00000 F:  
 FTMS + p ESI Full ms  
 [100.00-1500.00] MS  
 Aperta\_HDX

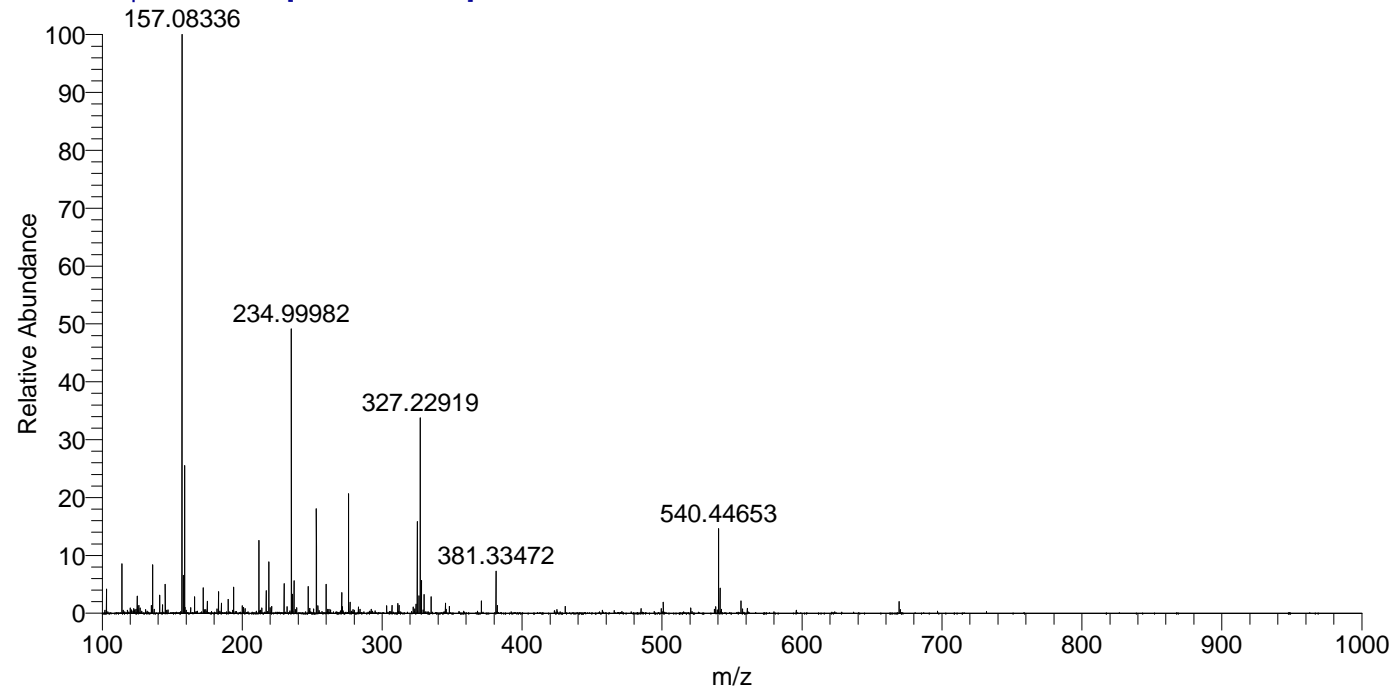
NL: 1.98E7  
 Base Peak m/z=  
 540.44503-540.45043 F:  
 FTMS + p ESI Full ms  
 [100.00-1500.00] MS  
 Aperta\_HDX

NL: 1.08E7  
 Base Peak m/z=  
 271.22956-271.23228 F:  
 FTMS + p ESI Full ms  
 [100.00-1500.00] MS  
 Aperta\_HDX

Aperta\_HDX#1562 RT: 9.34  
 T: FTMS + p ESI Full ms [100.00-1500.00]  
 m/z= 540.00000-541.00000

m/z	Intensity	Relative	Delta (ppm)	Composition
540.44653	2794566.3	100.00	-1.19	C <sub>28</sub> H <sub>42</sub> <sup>2</sup> H <sub>8</sub> O <sub>3</sub> N <sub>7</sub>
			1.67	C <sub>28</sub> H <sub>40</sub> <sup>2</sup> H <sub>9</sub> O <sub>3</sub> N <sub>7</sub>
			-4.06	C <sub>28</sub> H <sub>44</sub> <sup>2</sup> H <sub>7</sub> O <sub>3</sub> N <sub>7</sub>
			4.53	C <sub>28</sub> H <sub>38</sub> <sup>2</sup> H <sub>10</sub> O <sub>3</sub> N <sub>7</sub>
			-6.92	C <sub>28</sub> H <sub>46</sub> <sup>2</sup> H <sub>6</sub> O <sub>3</sub> N <sub>7</sub>
			7.40	C <sub>28</sub> H <sub>36</sub> <sup>2</sup> H <sub>11</sub> O <sub>3</sub> N <sub>7</sub>
			-9.79	C <sub>28</sub> H <sub>48</sub> <sup>2</sup> H <sub>5</sub> O <sub>3</sub> N <sub>7</sub>

Aperta\_HDX #1562 RT: 9.34 AV: 1 NL: 1.90E7  
 T: FTMS + p ESI Full ms [100.00-1500.00]



Aperta\_HDX #1562 RT: 9.34 AV: 1 NL: 2.78E6  
 T: FTMS + p ESI Full ms [100.00-1500.00]

