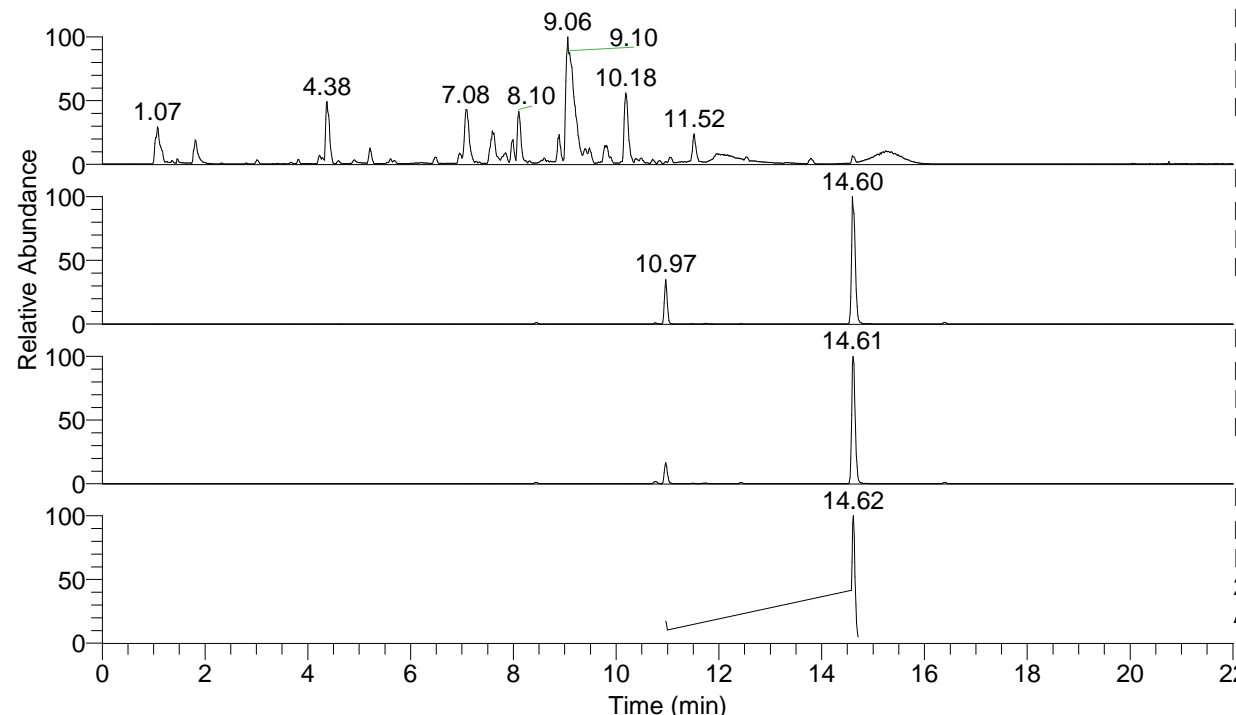


RT: 0.00 - 22.01



NL: 1.54E8
 Base Peak m/z= 100.00000-1500.00000 F:
 FTMS + p ESI Full ms [100.00-1500.00]
 MS Aperta19

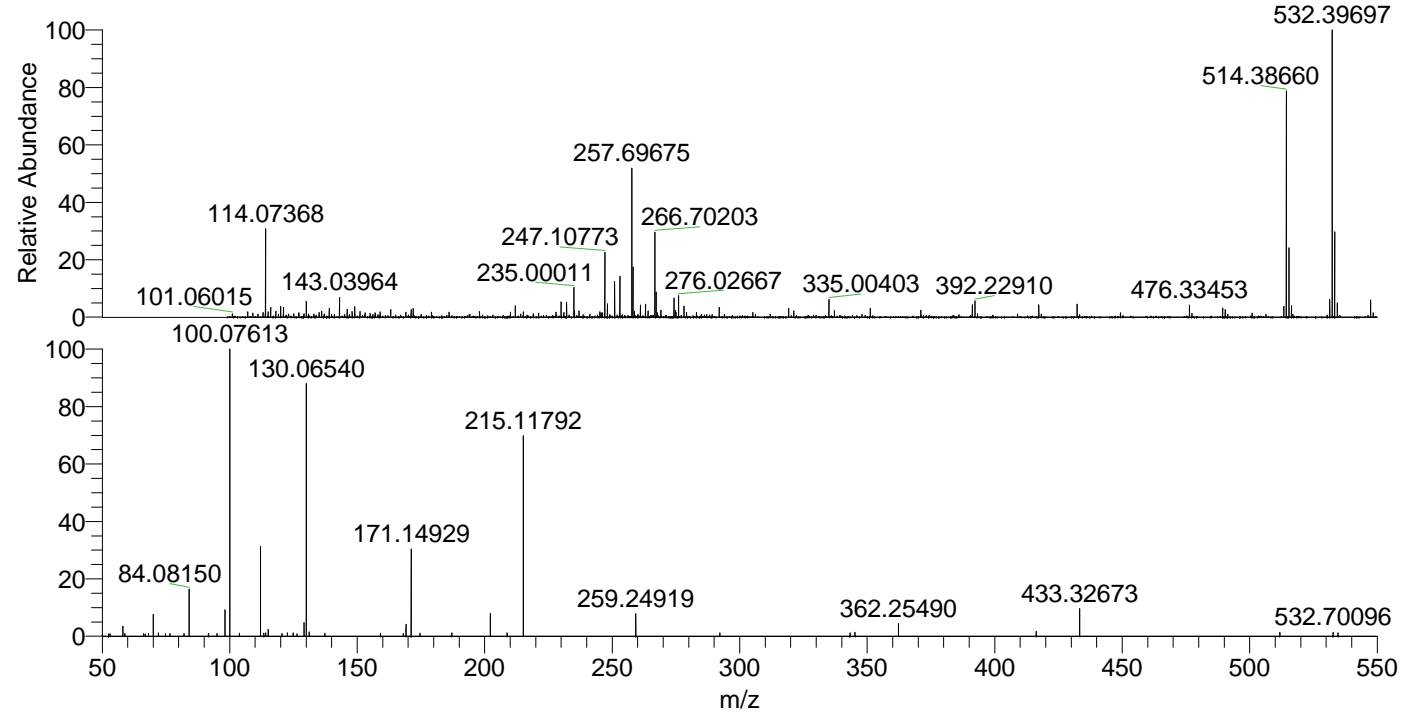
NL: 1.05E7
 Base Peak m/z= 532.39485-532.40017 F:
 FTMS + p ESI Full ms [100.00-1500.00]
 MS Aperta19

NL: 6.68E6
 Base Peak m/z= 266.70134-266.70400 F:
 FTMS + p ESI Full ms [100.00-1500.00]
 MS Aperta19

NL: 7.32E5
 Base Peak m/z= 50.00000-1500.00000 F:
 FTMS + p ESI d Full ms2
 266.70@hcd35.00 [50.00-560.00] MS
 Aperta19

Aperta19#4452-4464 RT: 10.96-10.99
 F: FTMS + p ESI d Full ms2 266.70 ...
 m/z= 50.00000-1000.00000

m/z	Intensity	Relative
50.00622	739.3	0.75
52.51156	804.4	0.81
53.05690	792.0	0.80
58.06606	3399.7	3.44
58.80161	947.6	0.96
66.26978	944.0	0.96
66.92016	746.7	0.76
68.19151	998.9	1.01
70.06606	7421.5	7.52
72.04502	1179.5	1.20
74.84319	862.4	0.87
76.52087	929.1	0.94
82.09777	913.7	0.93
84.08150	16232.2	16.45
91.67743	910.1	0.92
95.02998	930.4	0.94
98.09697	8985.5	9.10
100.07613	98699.3	100.00
103.76242	1015.7	1.03
112.11256	30592.5	31.00
113.39144	1020.8	1.03
114.09177	1172.4	1.19
115.12342	2378.9	2.41
120.50230	990.0	1.00
122.64510	1104.9	1.12
124.83672	1092.8	1.11
126.42362	855.2	0.87
129.13887	4610.4	4.67
130.06540	86219.7	87.36
131.11826	1555.8	1.58
137.32763	1041.0	1.05
159.09205	1069.6	1.08
168.02118	968.4	0.98
169.13370	4084.3	4.14
171.14929	30635.5	31.04
171.16260	945.8	0.96
174.58767	983.0	1.00
187.08631	1147.7	1.16
202.19176	8000.4	8.11
208.79693	1108.9	1.12
215.11792	67886.2	68.78
259.24919	7785.5	7.89
292.23370	1099.0	1.11
343.25993	1166.9	1.18
345.22753	1338.8	1.36
362.25490	4313.6	4.37
416.30569	1591.6	1.61
433.32673	9403.2	9.53
511.82793	1258.6	1.28
532.70096	1381.9	1.40
534.64176	1182.8	1.20



NL: 3.61E6
 Aperta19#4453 RT:
 10.97 AV: 1 T: FTMS + p
 ESI Full lock ms
 [100.00-1500.00]

NL: 9.71E4
 Aperta19#4436-4469 RT:
 10.96-10.99 AV: 3 F:
 FTMS + p ESI d Full ms2
 266.70@hcd35.00
 [50.00-560.00]