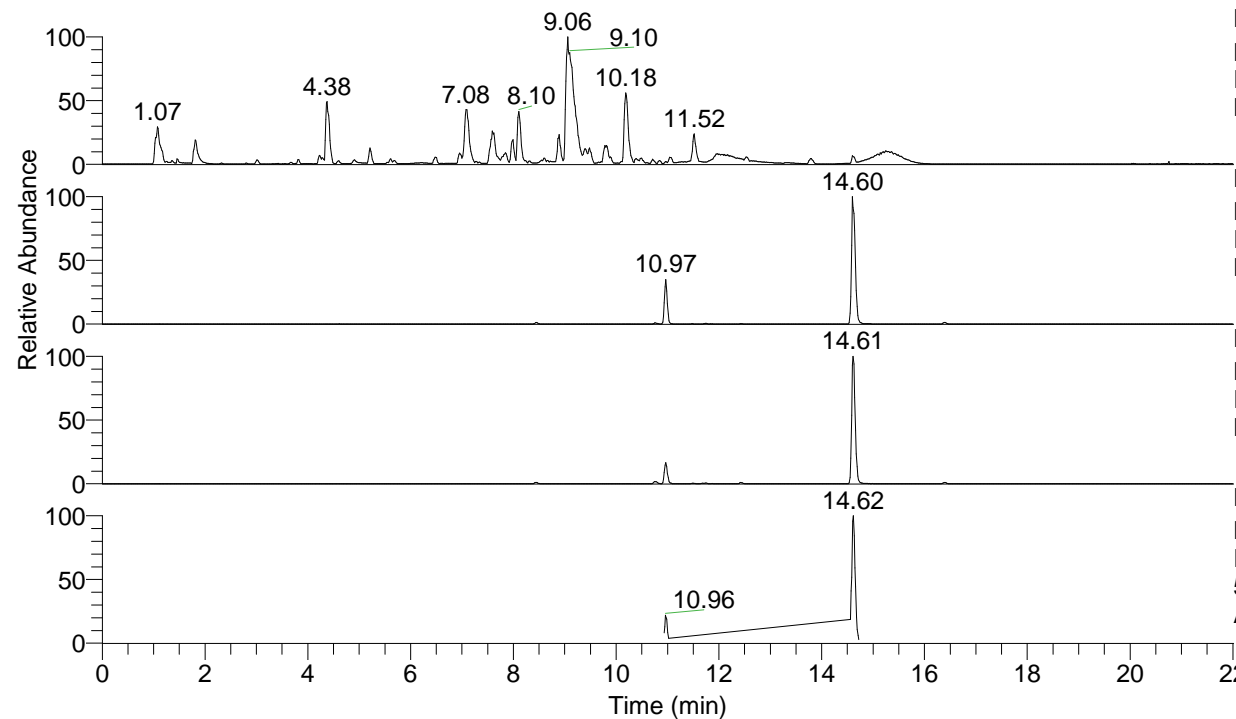


RT: 0.00 - 22.01



NL: 1.54E8
 Base Peak m/z= 100.00000-1500.00000 F:
 FTMS + p ESI Full ms [100.00-1500.00]
 MS Aperta19

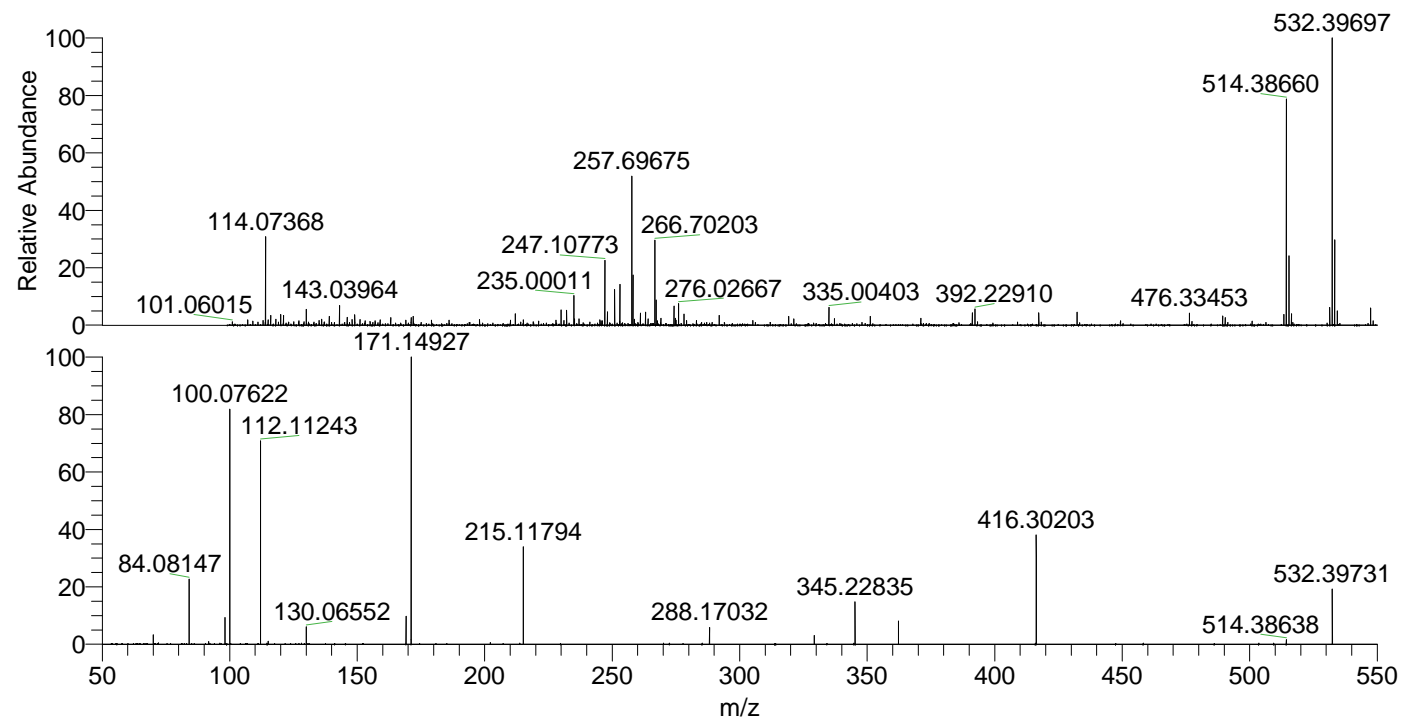
NL: 1.05E7
 Base Peak m/z= 532.39485-532.40017 F:
 FTMS + p ESI Full ms [100.00-1500.00]
 MS Aperta19

NL: 6.68E6
 Base Peak m/z= 266.70134-266.70400 F:
 FTMS + p ESI Full ms [100.00-1500.00]
 MS Aperta19

NL: 1.87E6
 Base Peak m/z= 50.00000-1500.00000 F:
 FTMS + p ESI d Full ms2
 532.40@hcd35.00 [50.00-560.00] MS
 Aperta19

Aperta19#4439-4473 RT: 10.93-11.02
 F: FTMS + p ESI d Full ms2 532.40 ...
 m/z= 50.00000-1000.00000

m/z	Intensity	Relative
70.06599	7423.9	3.16
84.08147	52059.5	22.17
91.75778	2112.8	0.90
98.09700	21412.3	9.12
100.07622	192316.5	81.91
112.11243	163449.9	69.61
115.12340	2407.7	1.03
130.06552	13903.0	5.92
169.13432	1416.9	0.60
169.17021	22641.6	9.64
171.14927	234798.2	100.00
202.19086	1461.0	0.62
215.11794	77457.3	32.99
288.17032	13433.7	5.72
329.23339	7122.4	3.03
345.22835	34023.2	14.49
362.25543	18554.3	7.90
416.30203	86790.9	36.96
514.38638	3622.9	1.54
532.39731	43999.0	18.74



NL: 3.61E6
 Aperta19#4453 RT:
 10.97 AV: 1 T: FTMS + p
 ESI Full lock ms
 [100.00-1500.00]

NL: 2.28E5
 Aperta19#4436-4475 RT:
 10.93-11.02 AV: 7 F:
 FTMS + p ESI d Full ms2
 532.40@hcd35.00
 [50.00-560.00]