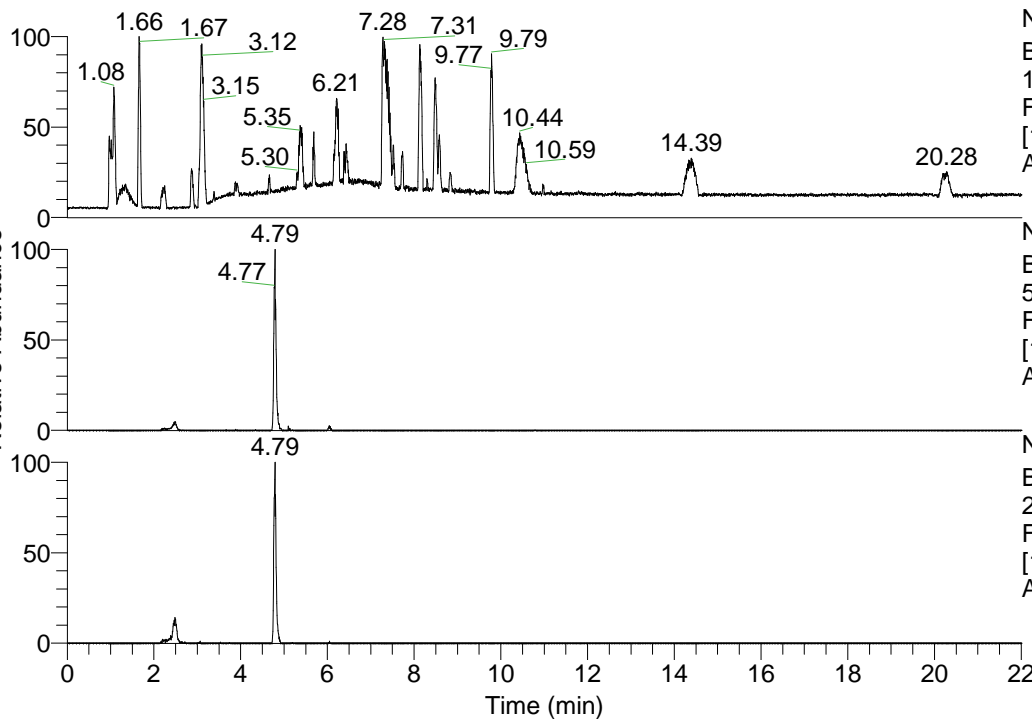


RT: 0.00 - 22.01



NL: 1.41E8
 Base Peak m/z=
 100.00000-1500.00000 F:
 FTMS + p ESI Full ms
 [100.00-1500.00] MS
 Aperta_HDX

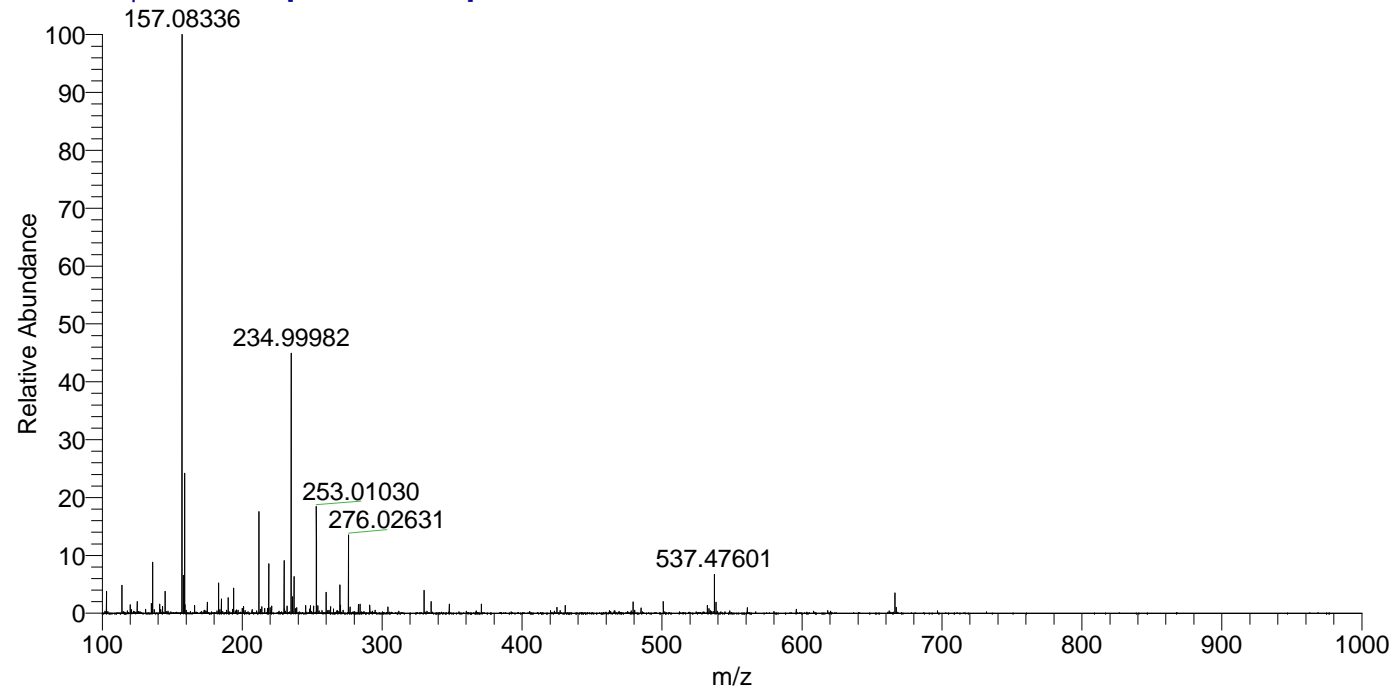
Aaperta_HDX#780 RT: 4.79
 T: FTMS + p ESI Full ms [100.00-1500.00]
 m/z= 537.00000-538.00000

m/z	Intensity	Relative	Delta (ppm)	Composition
537.47601	1391826.3	100.00	-1.04	C ₂₆ H ₄₁ ² H ₁₁ O ₄ N ₇
			1.84	C ₂₆ H ₃₉ ² H ₁₂ O ₄ N ₇
			-3.92	C ₂₆ H ₄₃ ² H ₁₀ O ₄ N ₇
			4.72	C ₂₆ H ₃₇ ² H ₁₃ O ₄ N ₇
			-6.80	C ₂₆ H ₄₅ ² H ₉ O ₄ N ₇
			7.60	C ₂₆ H ₃₅ ² H ₁₄ O ₄ N ₇
			-9.69	C ₂₆ H ₄₇ ² H ₈ O ₄ N ₇

NL: 1.39E6
 Base Peak m/z=
 537.47443-537.47981 F:
 FTMS + p ESI Full ms
 [100.00-1500.00] MS
 Aperta_HDX

NL: 1.02E6
 Base Peak m/z=
 269.74426-269.74696 F:
 FTMS + p ESI Full ms
 [100.00-1500.00] MS
 Aperta_HDX

Aaperta_HDX #780 RT: 4.79 AV: 1 NL: 2.07E7
 T: FTMS + p ESI Full ms [100.00-1500.00]



Aaperta_HDX #780 RT: 4.79 AV: 1 NL: 1.39E6
 T: FTMS + p ESI Full ms [100.00-1500.00]

