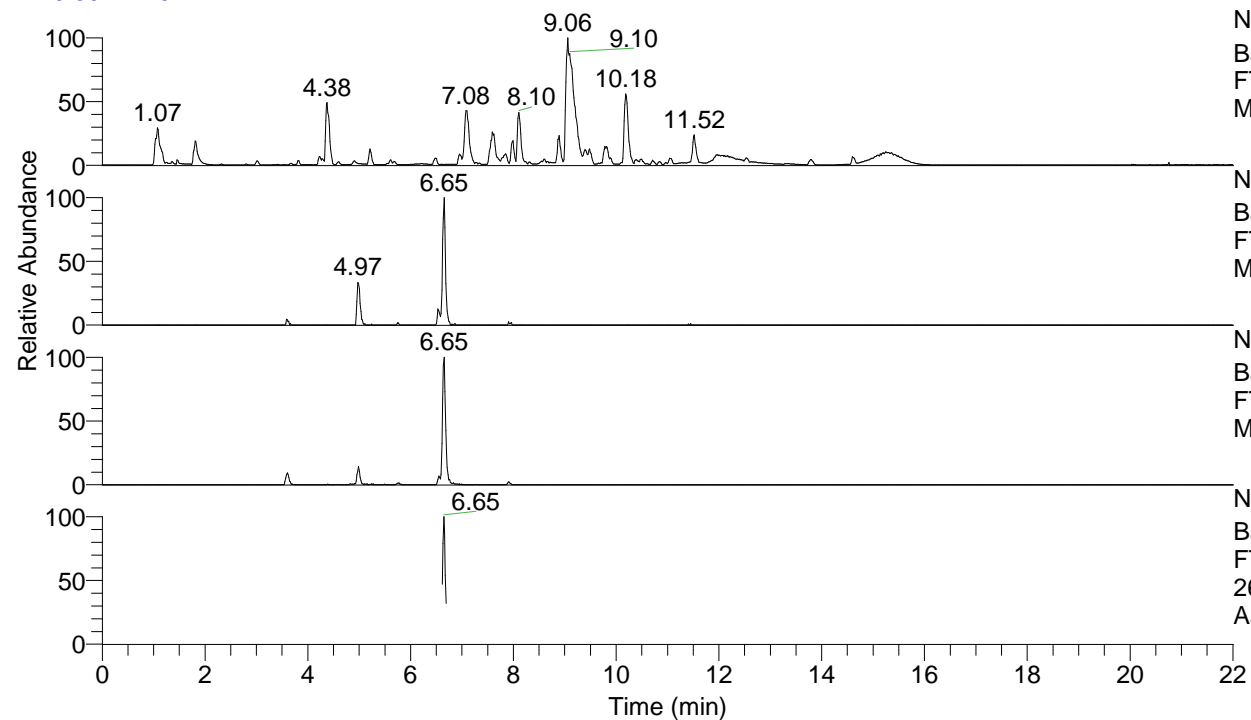


RT: 0.00 - 22.01



NL: 1.54E8
 Base Peak m/z= 100.00000-1500.00000 F:
 FTMS + p ESI Full ms [100.00-1500.00]
 MS Aperta19

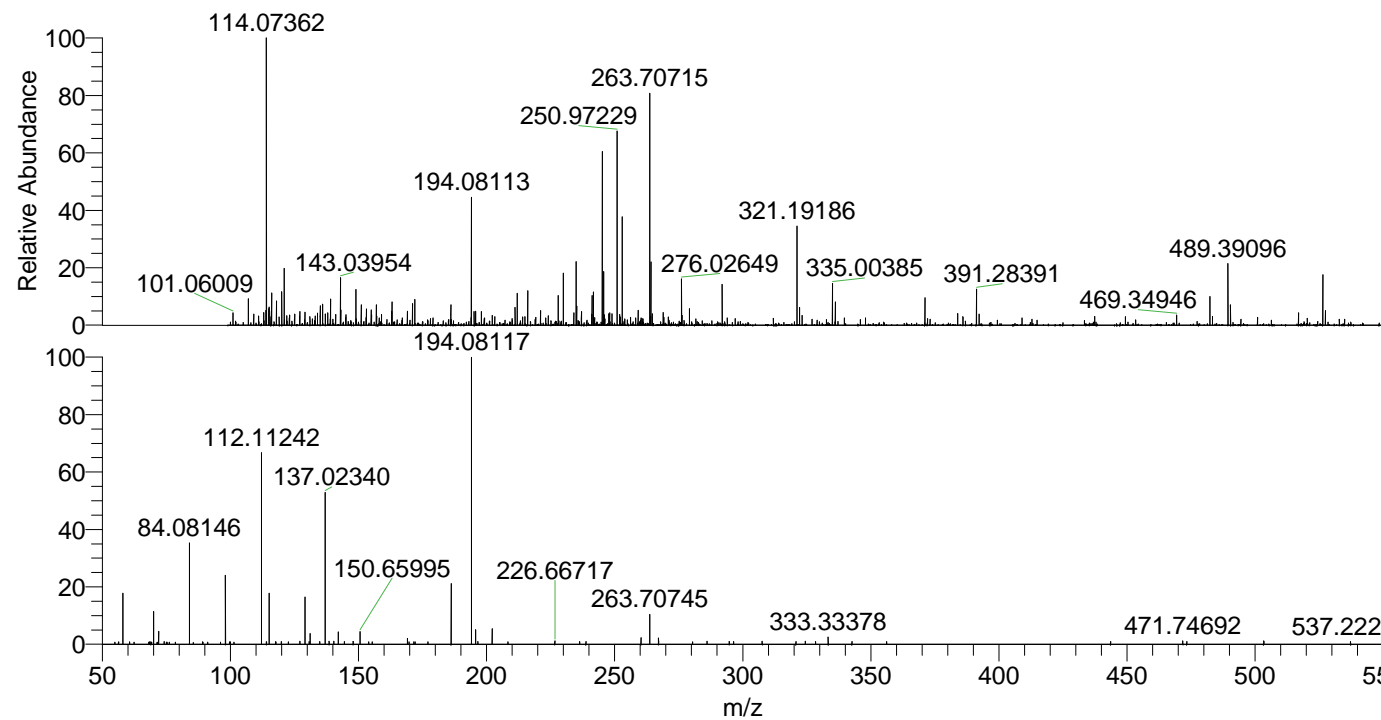
NL: 1.96E5
 Base Peak m/z= 526.40545-526.41071 F:
 FTMS + p ESI Full ms [100.00-1500.00]
 MS Aperta19

NL: 9.35E5
 Base Peak m/z= 263.70663-263.70927 F:
 FTMS + p ESI Full ms [100.00-1500.00]
 MS Aperta19

NL: 9.00E4
 Base Peak m/z= 50.00000-1500.00000 F:
 FTMS + p ESI d Full ms2
 263.71@hcd35.00 [50.00-555.00] MS
 Aperta19

Aperta19#2669-2700 RT: 6.62-6.70 AV:
 F: FTMS + p ESI d Full ms2 263.71 ...
 m/z= 50.00000-1000.00000

m/z	Intensity	Relative
58.06603	10350.1	17.75
70.06600	6632.6	11.38
72.08165	2691.4	4.62
74.18987	546.4	0.94
84.08146	20759.1	35.61
98.09704	13972.5	23.97
112.11242	38901.4	66.73
114.09226	524.8	0.90
115.12354	10475.8	17.97
119.92058	533.3	0.91
122.61312	512.4	0.88
127.12379	598.8	1.03
129.13903	9578.4	16.43
130.81773	533.7	0.92
131.11817	2237.4	3.84
134.88904	546.0	0.94
137.02340	32072.2	55.01
138.57821	618.5	1.06
140.39808	643.2	1.10
142.14665	2497.8	4.28
144.56017	546.0	0.94
147.95136	551.7	0.95
150.65995	2617.7	4.49
169.17052	1214.8	2.08
171.66187	521.7	0.89
172.10241	523.1	0.90
186.19667	12441.0	21.34
194.08117	58299.0	100.00
195.69988	2955.2	5.07
196.64908	548.7	0.94
202.19174	3224.4	5.53
208.39631	511.3	0.88
226.66717	670.1	1.15
236.31152	529.8	0.91
238.79563	542.9	0.93
260.28308	1344.7	2.31
263.70745	6089.2	10.44
267.13544	1277.4	2.19
280.41186	521.9	0.90
286.06646	600.4	1.03
294.75064	569.4	0.98
296.43822	546.6	0.94
307.59947	619.1	1.06
320.76195	579.9	0.99
324.41686	600.8	1.03
328.42219	532.5	0.91
333.33378	1484.8	2.55
342.63228	536.3	0.92
356.18012	537.5	0.92
443.59483	568.4	0.98
471.74692	693.8	1.19
473.30613	587.9	1.01
503.31542	651.7	1.12
503.39011	599.9	1.03
537.22228	564.9	0.97



NL: 1.10E6
 Aperta19#2683 RT: 6.65
 AV: 1 T: FTMS + p ESI
 Full lock ms
 [100.00-1500.00]

NL: 5.81E4
 Aperta19#2666-2701
 RT: 6.62-6.70 AV: 6 F:
 FTMS + p ESI d Full ms2
 263.71@hcd35.00
 [50.00-555.00]