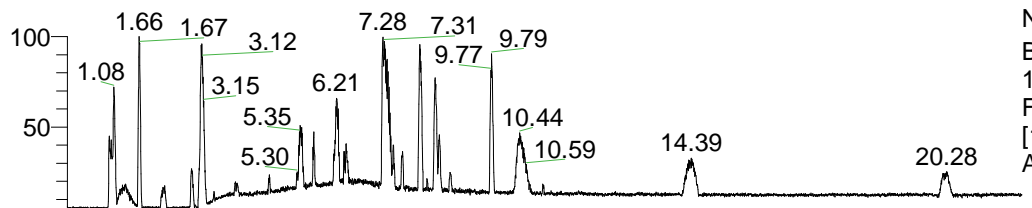


RT: 0.00 - 22.01



NL: 1.41E8
 Base Peak m/z=
 100.00000-1500.00000 F:
 FTMS + p ESI Full ms
 [100.00-1500.00] MS
 Aperta_HDX

Aperta_HDX#525 RT: 3.25

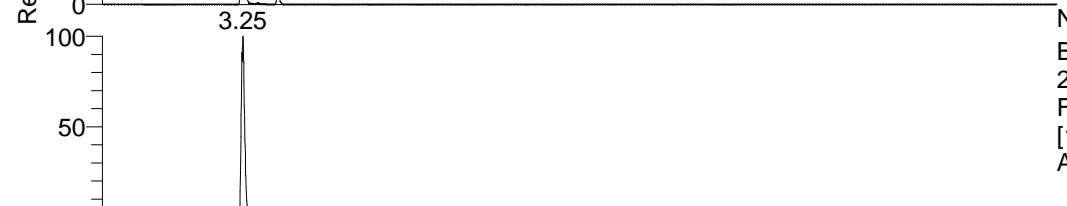
T: FTMS + p ESI Full ms [100.00-1500.00]

m/z= 520.00000-521.00000

m/z	Intensity	Relative	Delta (ppm)	Composition
520.47491	5369730.5	100.00	-0.90	C ₂₆ H ₄₂ ² H ₁₀ O ₃ N ₇
			-3.87	C ₂₆ H ₄₄ ² H ₉ O ₃ N ₇
			-6.85	C ₂₆ H ₄₆ ² H ₈ O ₃ N ₇
			-9.82	C ₂₆ H ₄₈ ² H ₇ O ₃ N ₇



NL: 5.88E6
 Base Peak m/z=
 520.47333-520.47853 F:
 FTMS + p ESI Full ms
 [100.00-1500.00] MS
 Aperta_HDX

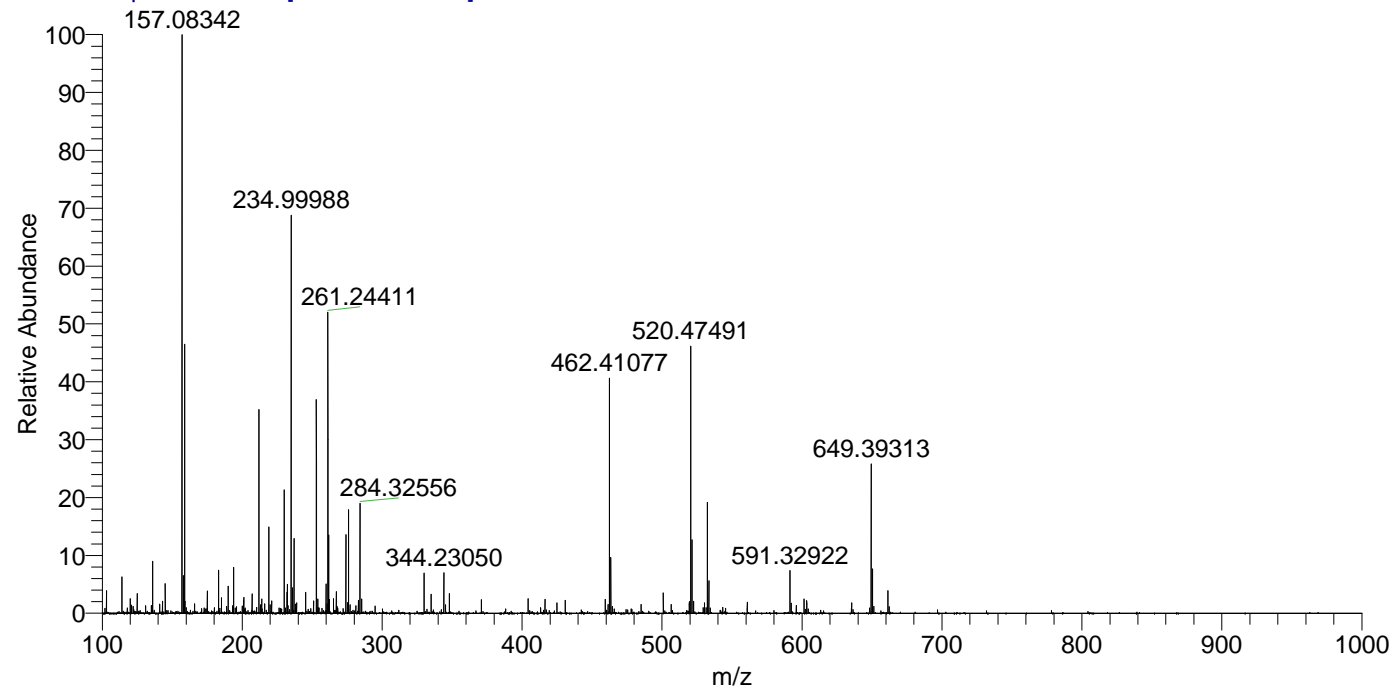


NL: 6.30E6
 Base Peak m/z=
 261.24371-261.24633 F:
 FTMS + p ESI Full ms
 [100.00-1500.00] MS
 Aperta_HDX

Time (min)

Aperta_HDX #525 RT: 3.25 AV: 1 NL: 1.16E7

T: FTMS + p ESI Full ms [100.00-1500.00]



Aperta_HDX #525 RT: 3.25 AV: 1 NL: 5.34E6

T: FTMS + p ESI Full ms [100.00-1500.00]

