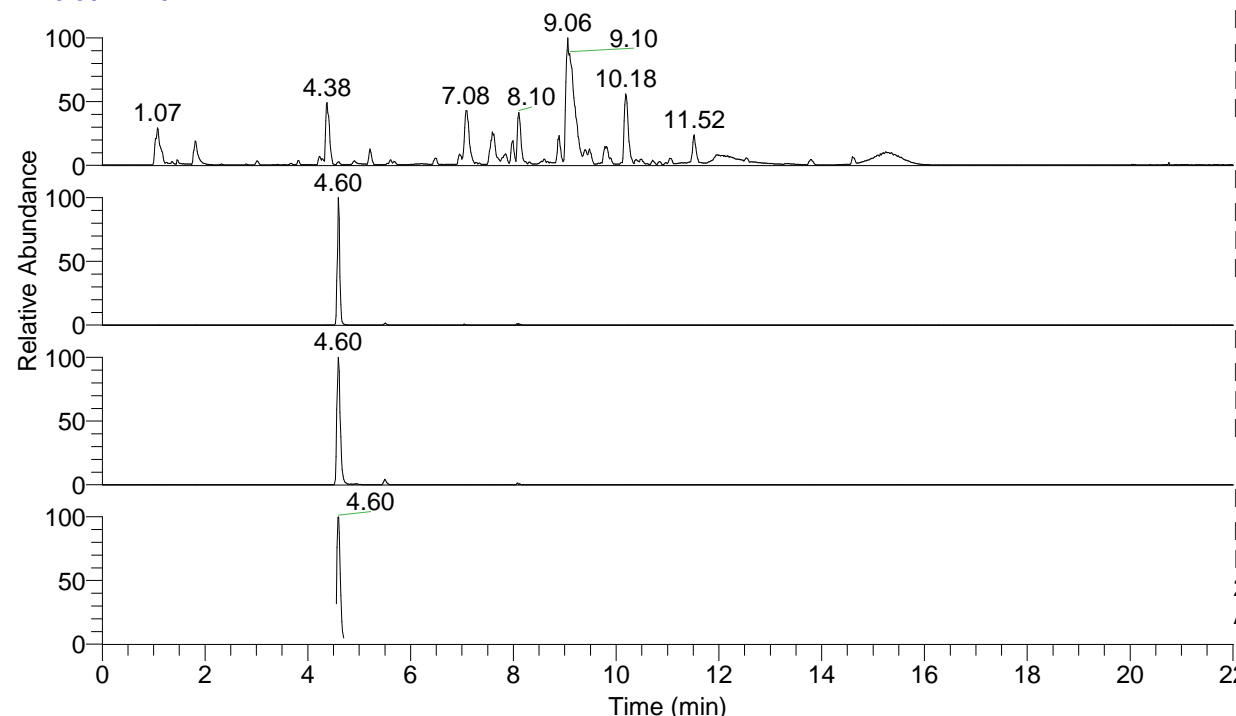


RT: 0.00 - 22.01



NL: 1.54E8
 Base Peak m/z= 100.00000-1500.00000 F:
 FTMS + p ESI Full ms [100.00-1500.00]
 MS Aperta19

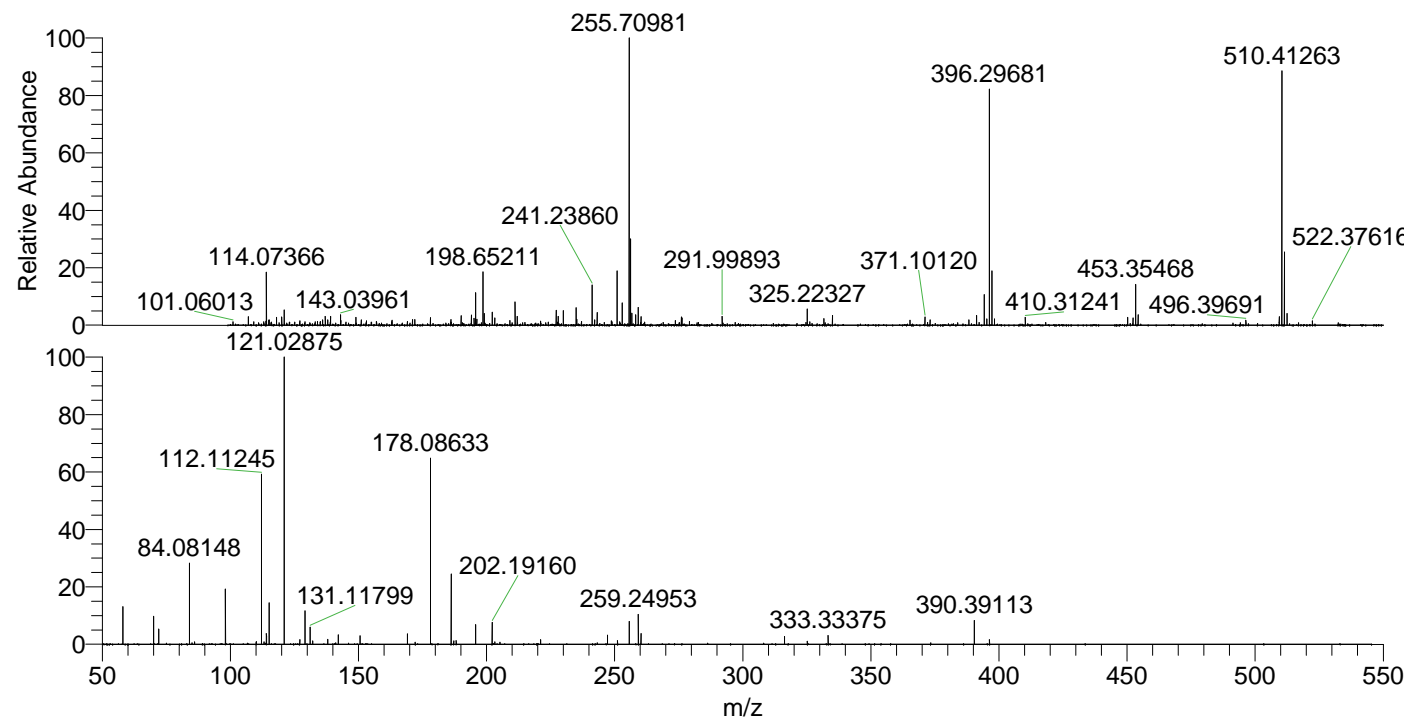
NL: 3.76E6
 Base Peak m/z= 510.41061-510.41571 F:
 FTMS + p ESI Full ms [100.00-1500.00]
 MS Aperta19

NL: 4.41E6
 Base Peak m/z= 255.70921-255.71177 F:
 FTMS + p ESI Full ms [100.00-1500.00]
 MS Aperta19

NL: 4.87E5
 Base Peak m/z= 50.00000-1500.00000 F:
 FTMS + p ESI d Full ms2
 255.71@hcd35.00 [50.00-540.00] MS
 Aperta19

Aperta19#1846-1886 RT: 4.56-4.66 AV:
 F: FTMS + p ESI d Full ms2 255.71 ...
 m/z= 50.00000-1000.00000

m/z	Intensity	Relative
58.06604	38301.1	13.09
70.06595	28752.5	9.83
72.08157	15372.3	5.25
84.08148	83399.3	28.50
85.07661	1576.5	0.54
86.06085	2489.8	0.85
98.09699	56143.8	19.19
110.09696	2640.4	0.90
112.11245	173517.8	59.30
113.10780	2418.3	0.83
114.09173	11018.9	3.77
115.12333	42335.7	14.47
121.02875	292586.4	100.00
127.12320	4674.2	1.60
129.13887	34015.7	11.63
131.11799	17813.7	6.09
132.14973	3660.8	1.25
138.05533	5062.4	1.73
141.13889	1524.0	0.52
142.14685	9737.9	3.33
150.66010	8578.5	2.93
169.17034	10695.8	3.66
172.18068	1990.7	0.68
178.08633	194215.5	66.38
186.19646	72507.6	24.78
187.18636	3622.8	1.24
188.17627	3858.9	1.32
195.69927	20118.4	6.88
202.19160	23150.6	7.91
203.22335	2478.5	0.85
205.20219	2111.3	0.72
221.12877	4562.5	1.56
247.19717	9400.4	3.21
251.13921	3862.9	1.32
255.70980	23454.9	8.02
259.24953	30596.4	10.46
260.28156	10881.4	3.72
316.30702	8211.2	2.81
325.22455	3273.4	1.12
333.33375	9330.4	3.19
373.36532	1547.0	0.53
390.39113	24140.1	8.25
396.29697	4744.1	1.62



NL: 4.16E6
 Aperta19#1861 RT: 4.60
 AV: 1 T: FTMS + p ESI
 Full lock ms
 [100.00-1500.00]

NL: 2.91E5
 Aperta19#1844-1888
 RT: 4.56-4.66 AV: 8 F:
 FTMS + p ESI d Full ms2
 255.71@hcd35.00
 [50.00-540.00]