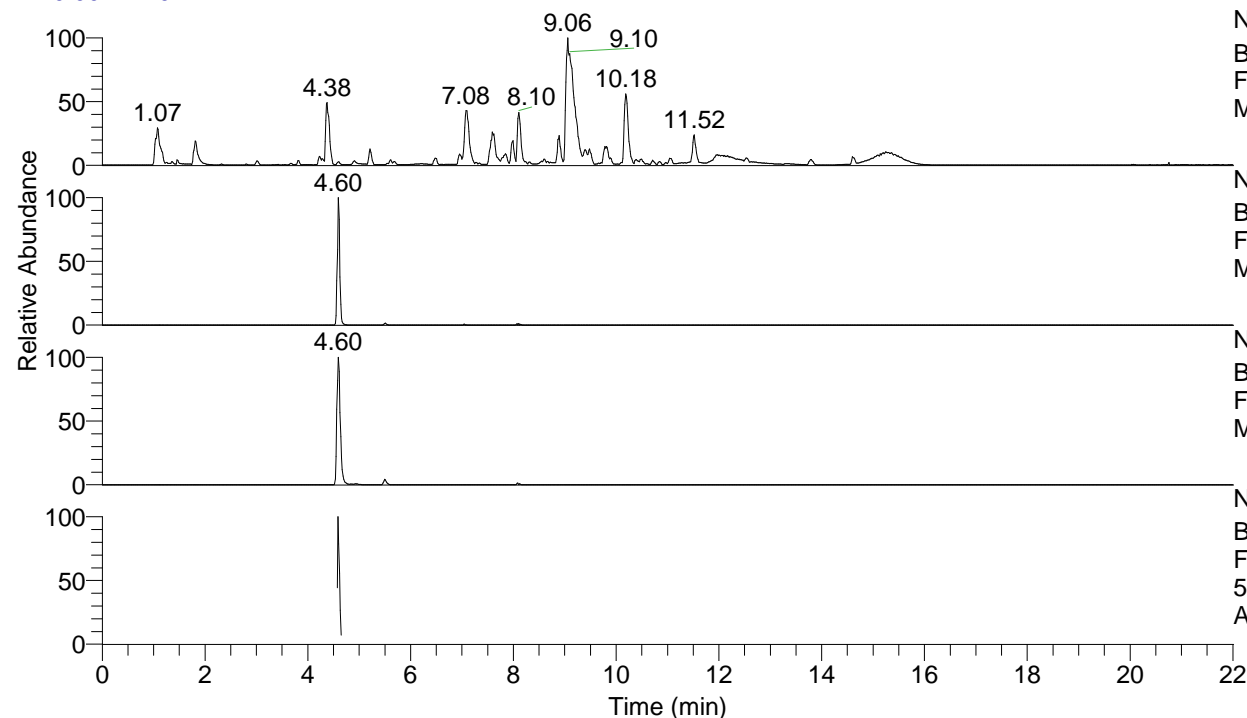


RT: 0.00 - 22.01



NL: 1.54E8
 Base Peak m/z= 100.00000-1500.00000 F:
 FTMS + p ESI Full ms [100.00-1500.00]
 MS Aperta19

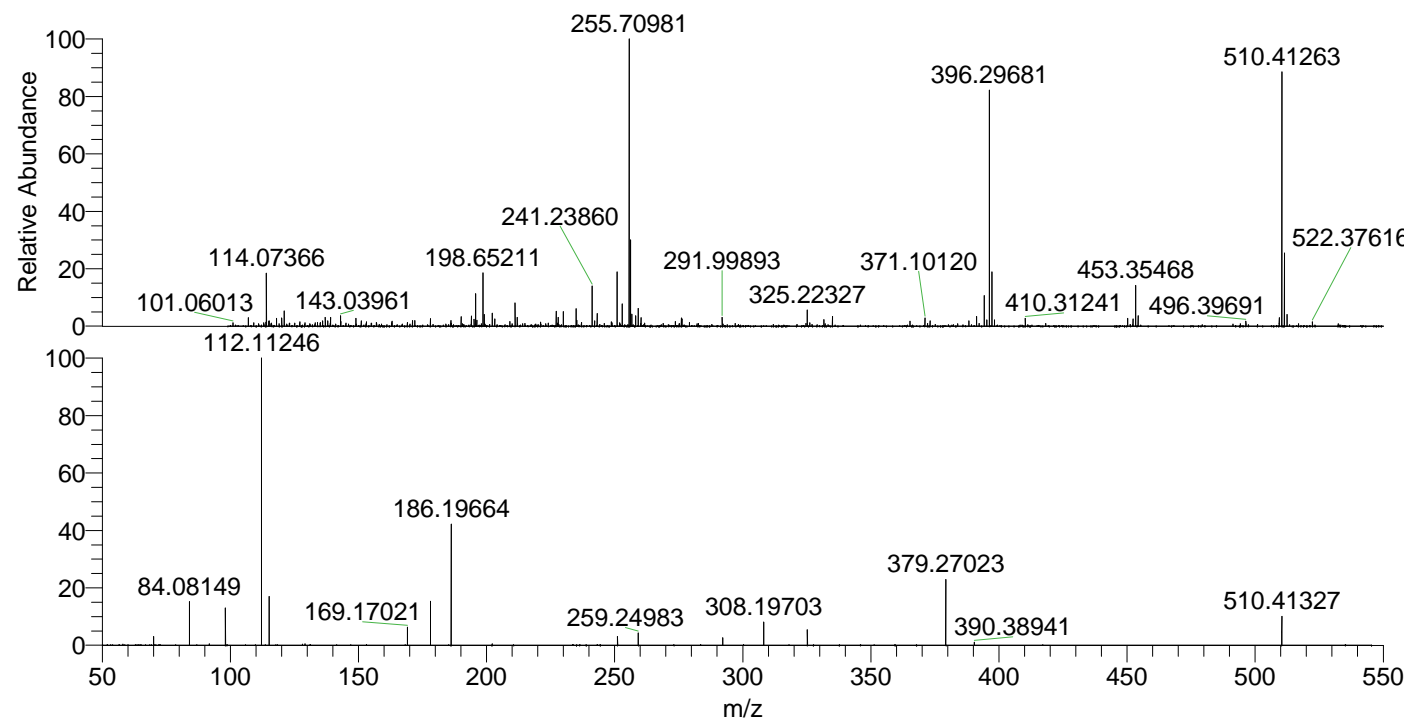
NL: 3.76E6
 Base Peak m/z= 510.41061-510.41571 F:
 FTMS + p ESI Full ms [100.00-1500.00]
 MS Aperta19

NL: 4.41E6
 Base Peak m/z= 255.70921-255.71177 F:
 FTMS + p ESI Full ms [100.00-1500.00]
 MS Aperta19

NL: 7.56E5
 Base Peak m/z= 50.00000-1500.00000 F:
 FTMS + p ESI d Full ms2
 510.41@hcd35.00 [50.00-540.00] MS
 Aperta19

Aaperta19#1852-1884 RT: 4.57-4.65 AV:
 F: FTMS + p ESI d Full ms2 510.41 ...
 m/z= 50.00000-1000.00000

m/z	Intensity	Relative
70.06601	10951.1	2.97
84.08149	55659.7	15.11
91.75179	1874.6	0.51
98.09696	47192.7	12.81
112.11246	368275.8	100.00
115.12330	62384.4	16.94
129.13881	1926.6	0.52
169.17021	23359.2	6.34
178.08628	57816.1	15.70
186.19664	158532.1	43.05
251.13971	11304.9	3.07
259.24983	15577.7	4.23
292.20225	9392.9	2.55
308.19703	29434.5	7.99
325.22456	19840.1	5.39
379.27023	83755.5	22.74
390.38941	3926.2	1.07
510.41327	36815.6	10.00



NL: 4.16E6
 Aaperta19#1861 RT: 4.60
 AV: 1 T: FTMS + p ESI
 Full lock ms
 [100.00-1500.00]

NL: 3.64E5
 Aaperta19#1850-1885
 RT: 4.57-4.65 AV: 6 F:
 FTMS + p ESI d Full ms2
 510.41@hcd35.00
 [50.00-540.00]