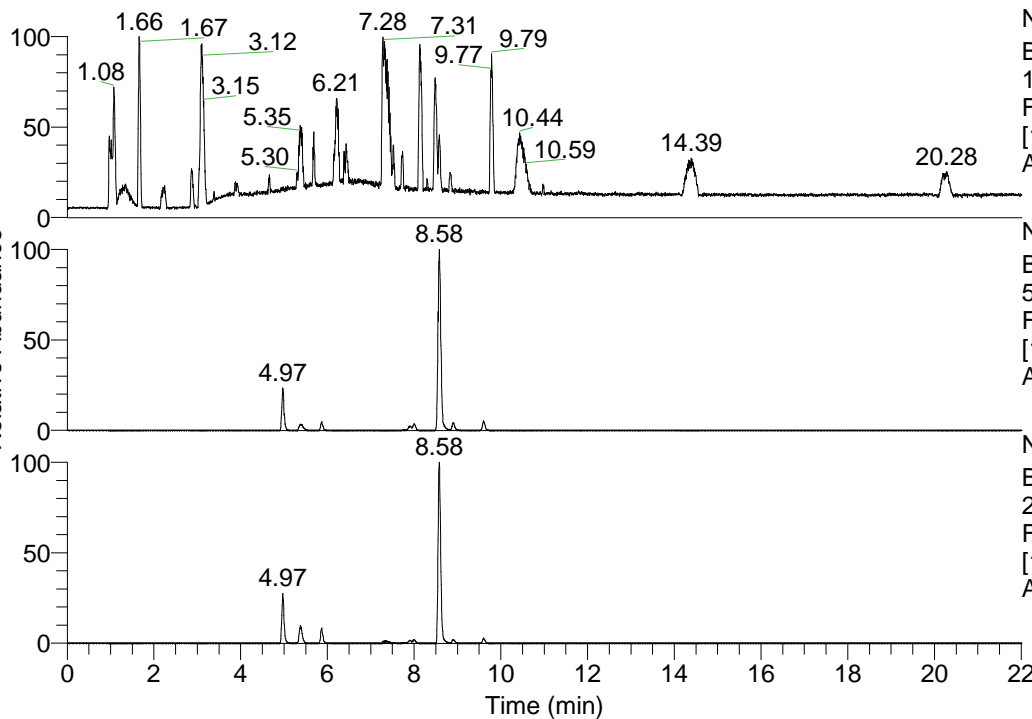


RT: 0.00 - 22.01



NL: 1.41E8
 Base Peak m/z=
 100.00000-1500.00000 F:
 FTMS + p ESI Full ms
 [100.00-1500.00] MS
 Aperta_HDX

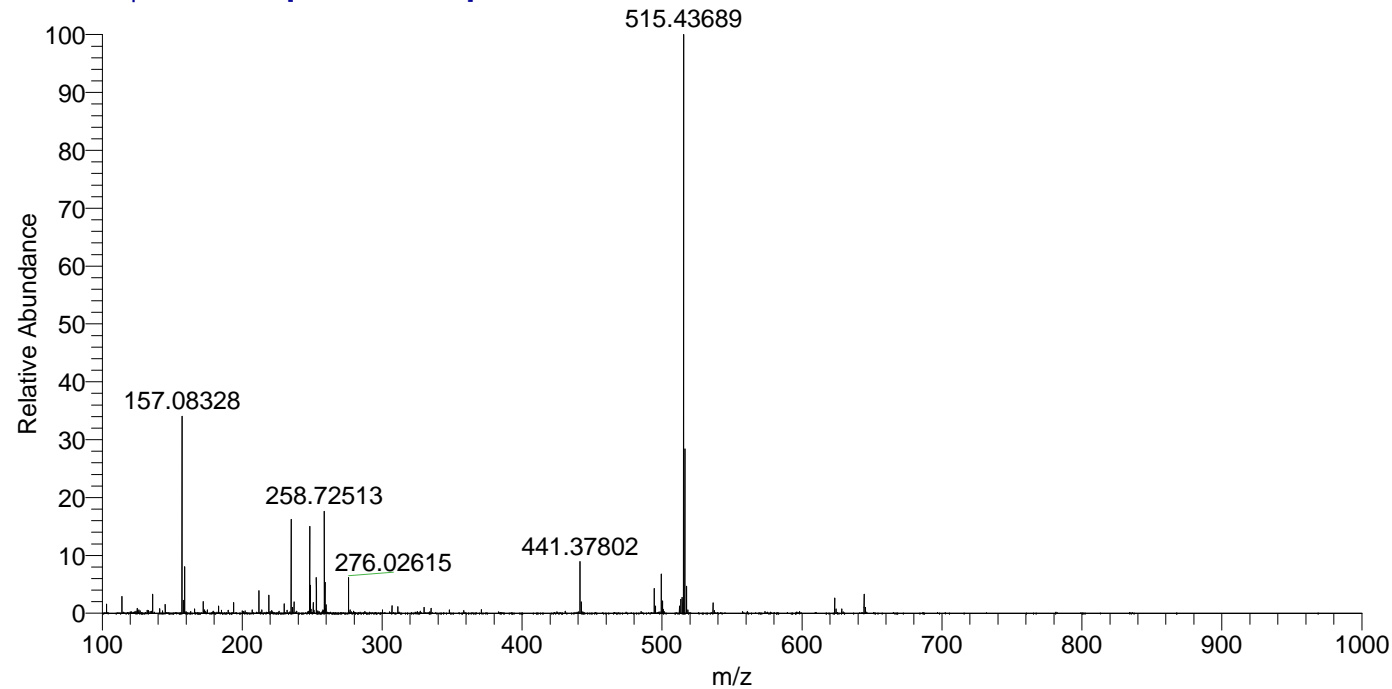
NL: 6.44E7
 Base Peak m/z=
 515.43578-515.44094 F:
 FTMS + p ESI Full ms
 [100.00-1500.00] MS
 Aperta_HDX

NL: 1.16E7
 Base Peak m/z=
 258.72494-258.72752 F:
 FTMS + p ESI Full ms
 [100.00-1500.00] MS
 Aperta_HDX

Aperta_HDX#1432 RT: 8.58
 T: FTMS + p ESI Full ms [100.00-1500.00]
 m/z= 515.00000-516.00000

m/z	Intensity	Relative	Delta (ppm)	Composition
515.43689	64397556.0	100.00	1.23	C ₂₆ H ₃₇ ² H ₁₀ O ₃ N ₇
			-1.78	C ₂₆ H ₃₉ ² H ₉ O ₃ N ₇
			-4.78	C ₂₆ H ₄₁ ² H ₈ O ₃ N ₇
			-7.78	C ₂₆ H ₄₃ ² H ₇ O ₃ N ₇

Aperta_HDX #1432 RT: 8.58 AV: 1 NL: 6.21E7
 T: FTMS + p ESI Full ms [100.00-1500.00]



Aperta_HDX #1432 RT: 8.58 AV: 1 NL: 6.21E7
 T: FTMS + p ESI Full ms [100.00-1500.00]

