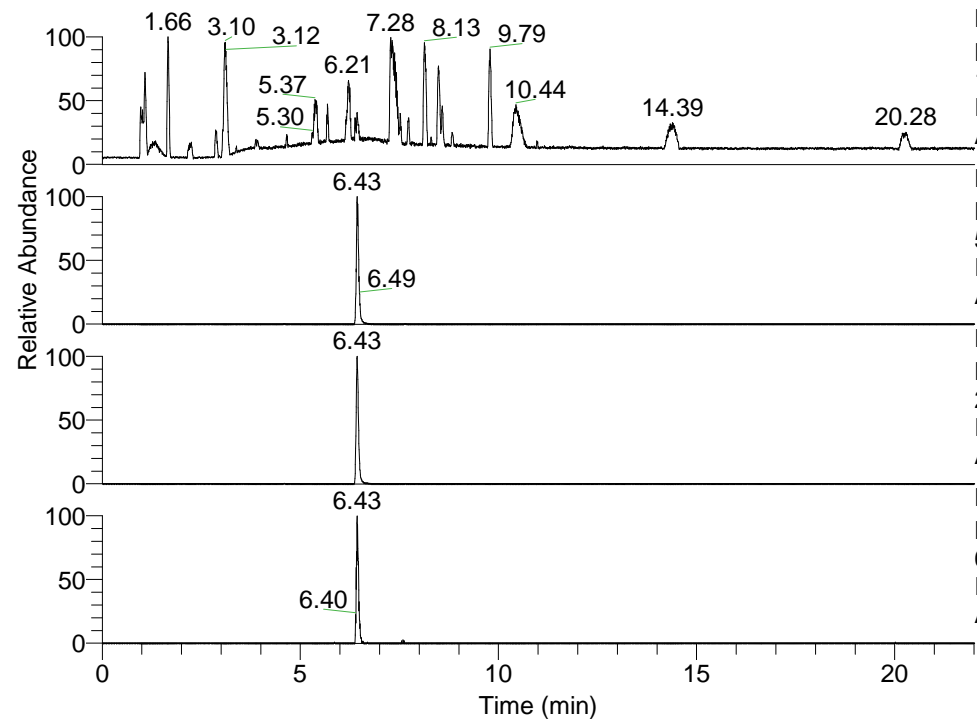


RT: 0.00 - 22.01



NL: 1.41E8
 Base Peak m/z=
 100.00000-1500.00000 F: FTMS + p
 ESI Full ms [100.00-1500.00] MS
 Aperta_HDX

NL: 2.52E7
 Base Peak m/z=
 511.42172-511.42684 F: FTMS + p
 ESI Full ms [100.00-1500.00] MS
 Aperta_HDX

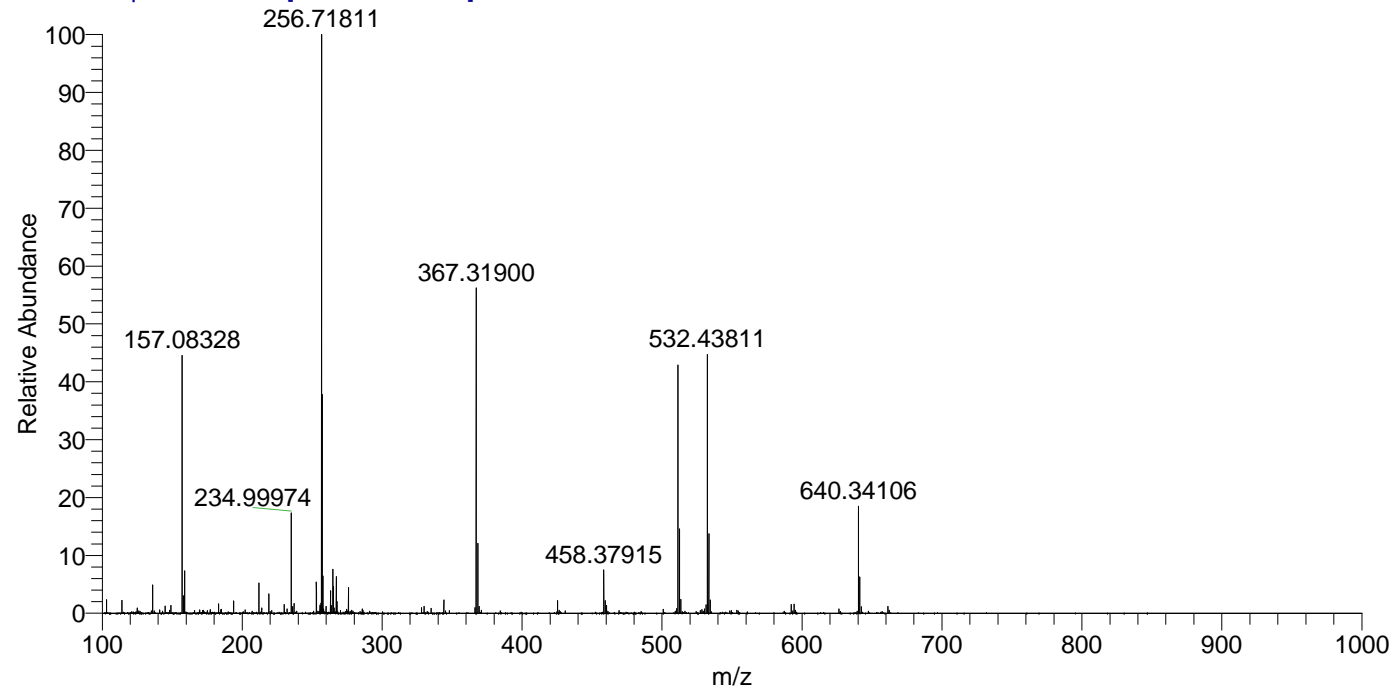
NL: 5.73E7
 Base Peak m/z=
 256.71791-256.72047 F: FTMS + p
 ESI Full ms [100.00-1500.00] MS
 Aperta_HDX

NL: 4.37E5
 Base Peak m/z=
 626.42029-626.42655 F: FTMS + p
 ESI Full ms [100.00-1500.00] MS
 Aperta_HDX

Aperta_HDX#1059 RT: 6.43
 T: FTMS + p ESI Full ms [100.00-1500.00]
 m/z= 511.00000-512.00000

m/z	Intensity	Relative	Delta (ppm)	Composition
511.42300	24073128.0	100.00	-1.41	C ₂₇ H ₄₃ ² H ₆ O ₃ N ₆
			1.62	C ₂₇ H ₄₁ ² H ₇ O ₃ N ₆
			-4.44	C ₂₇ H ₄₅ ² H ₅ O ₃ N ₆
			4.64	C ₂₇ H ₃₉ ² H ₈ O ₃ N ₆
			-7.47	C ₂₇ H ₄₇ ² H ₄ O ₃ N ₆
			7.67	C ₂₇ H ₃₇ ² H ₉ O ₃ N ₆

Aperta_HDX #1059 RT: 6.43 AV: 1 NL: 5.59E7
 T: FTMS + p ESI Full ms [100.00-1500.00]



Aperta_HDX #1059 RT: 6.43 AV: 1 NL: 2.40E7
 T: FTMS + p ESI Full ms [100.00-1500.00]

