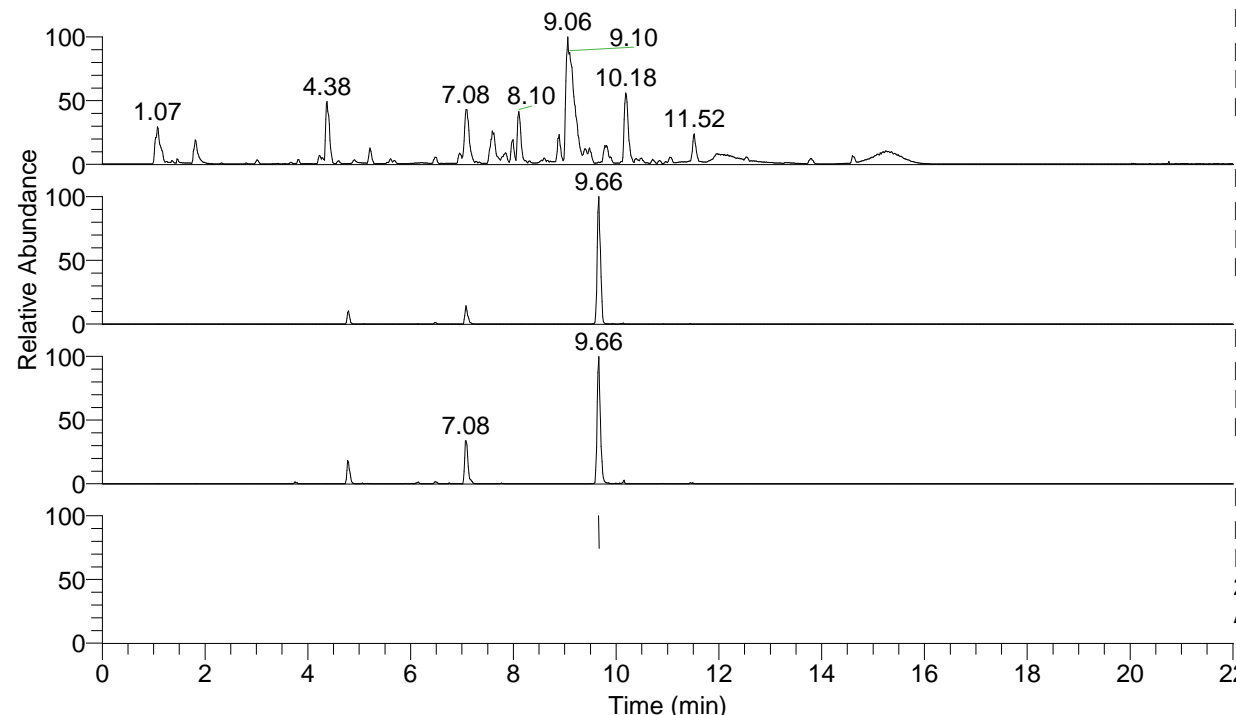


RT: 0.00 - 22.01



NL: 1.54E8  
 Base Peak m/z= 100.00000-1500.00000 F:  
 FTMS + p ESI Full ms [100.00-1500.00]  
 MS Aperta19

NL: 2.75E6  
 Base Peak m/z= 492.36375-492.36867 F:  
 FTMS + p ESI Full ms [100.00-1500.00]  
 MS Aperta19

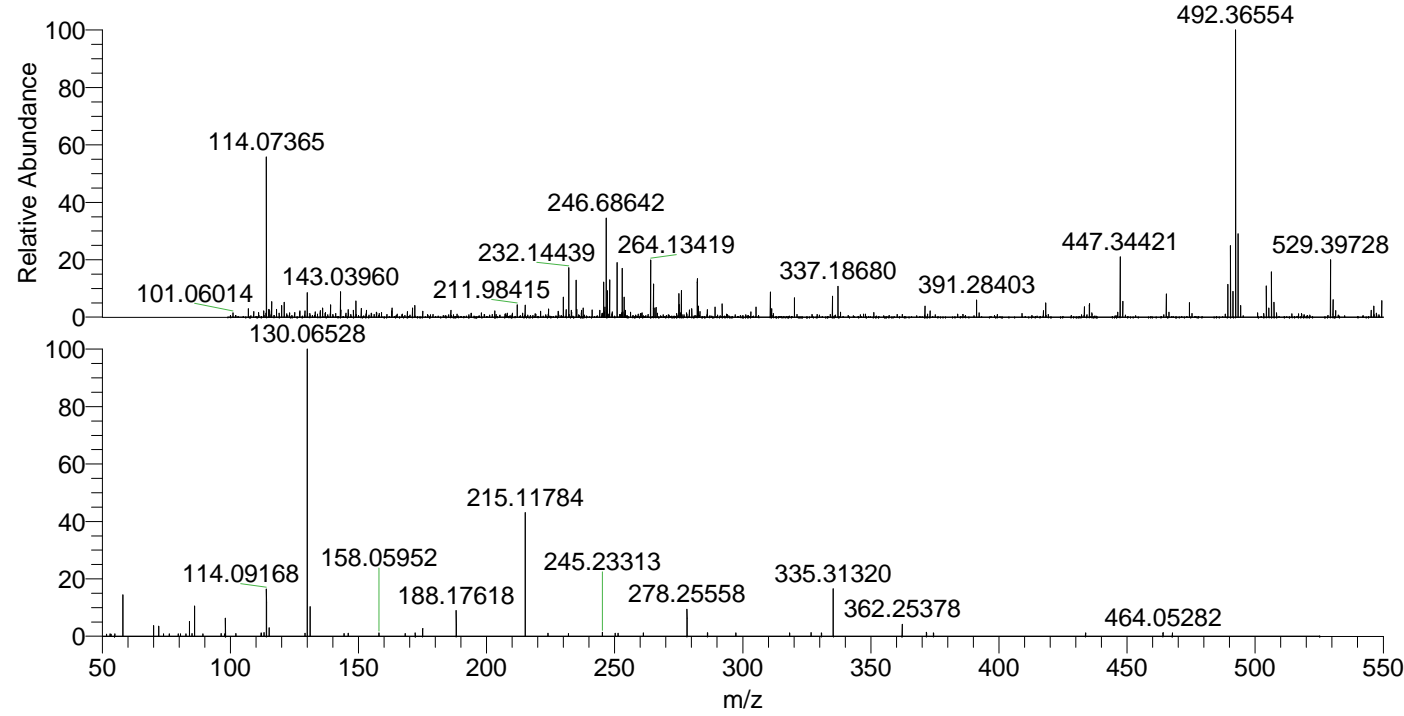
NL: 9.11E5  
 Base Peak m/z= 246.68579-246.68825 F:  
 FTMS + p ESI Full ms [100.00-1500.00]  
 MS Aperta19

NL: 1.78E5  
 Base Peak m/z= 50.00000-1500.00000 F:  
 FTMS + p ESI d Full ms2  
 246.69@hcd35.00 [50.00-520.00] MS  
 Aperta19

Aperta19#3922-3928 RT: 9.66-9.67 AV:

F: FTMS + p ESI d Full ms2 246.69 ...  
 m/z= 50.00000-1000.00000

m/z	Intensity	Relative
58.06356	1193.0	0.79
58.06599	21739.2	14.35
70.06594	5562.4	3.67
72.08162	5238.3	3.46
73.94657	1335.3	0.88
76.22058	1256.3	0.83
79.71749	1311.0	0.87
80.55407	1310.2	0.86
82.67312	1190.2	0.79
84.08146	7893.1	5.21
85.07709	1416.0	0.93
86.06079	15675.6	10.35
89.24452	1222.1	0.81
96.42497	1416.0	0.93
97.73418	1211.7	0.80
98.09699	9299.0	6.14
102.11120	1478.0	0.98
112.07613	1825.0	1.20
112.11278	1488.6	0.98
113.10756	1988.0	1.31
114.09168	24793.8	16.36
115.12368	4444.0	2.93
129.15890	1549.3	1.02
130.06528	151521.5	100.00
131.11826	16027.1	10.58
144.34429	1466.3	0.97
146.06074	1565.6	1.03
158.05952	1819.4	1.20
168.26283	1474.9	0.97
172.18247	1783.2	1.18
175.06321	4089.2	2.70
188.17618	13442.2	8.87
215.11784	64366.1	42.48
223.94130	1659.5	1.10
231.95843	1416.4	0.93
245.23313	2154.9	1.42
250.21065	1682.8	1.11
251.37770	1647.7	1.09
261.22931	1742.7	1.15
278.25558	14577.1	9.62
286.25774	1799.0	1.19
297.31758	1716.8	1.13
318.28583	1795.5	1.19
326.66518	1901.7	1.26
330.73026	1844.1	1.22
335.31320	25121.0	16.58
362.25378	6482.5	4.28
371.71179	2002.0	1.32
374.45992	1769.9	1.17
433.82483	1755.2	1.16
464.05282	1974.0	1.30
467.72392	1698.4	1.12



NL: 2.64E6  
 Aperta19#3925 RT: 9.66  
 AV: 1 T: FTMS + p ESI  
 Full lock ms  
 [100.00-1500.00]

NL: 1.49E5  
 Aperta19#3910-3936  
 RT: 9.66-9.67 AV: 2 F:  
 FTMS + p ESI d Full ms2  
 246.69@hcd35.00  
 [50.00-520.00]