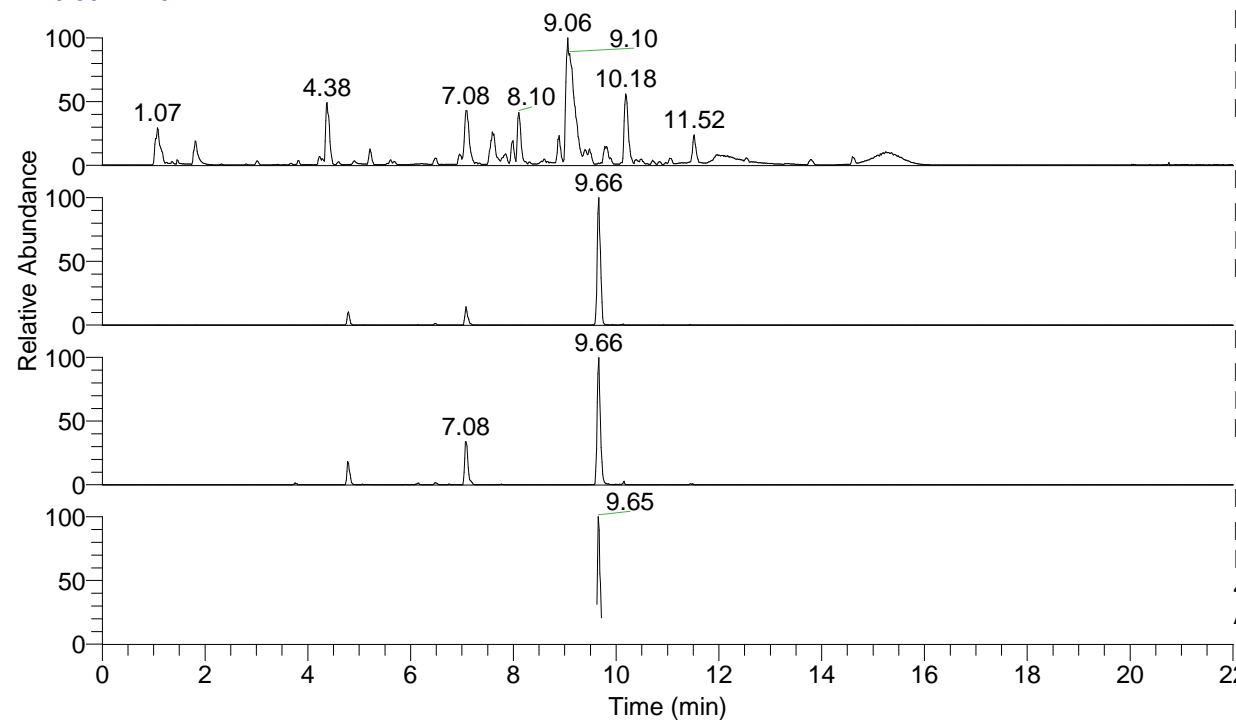


RT: 0.00 - 22.01



NL: 1.54E8
 Base Peak m/z= 100.00000-1500.00000 F:
 FTMS + p ESI Full ms [100.00-1500.00]
 MS Aperta19

NL: 2.75E6
 Base Peak m/z= 492.36375-492.36867 F:
 FTMS + p ESI Full ms [100.00-1500.00]
 MS Aperta19

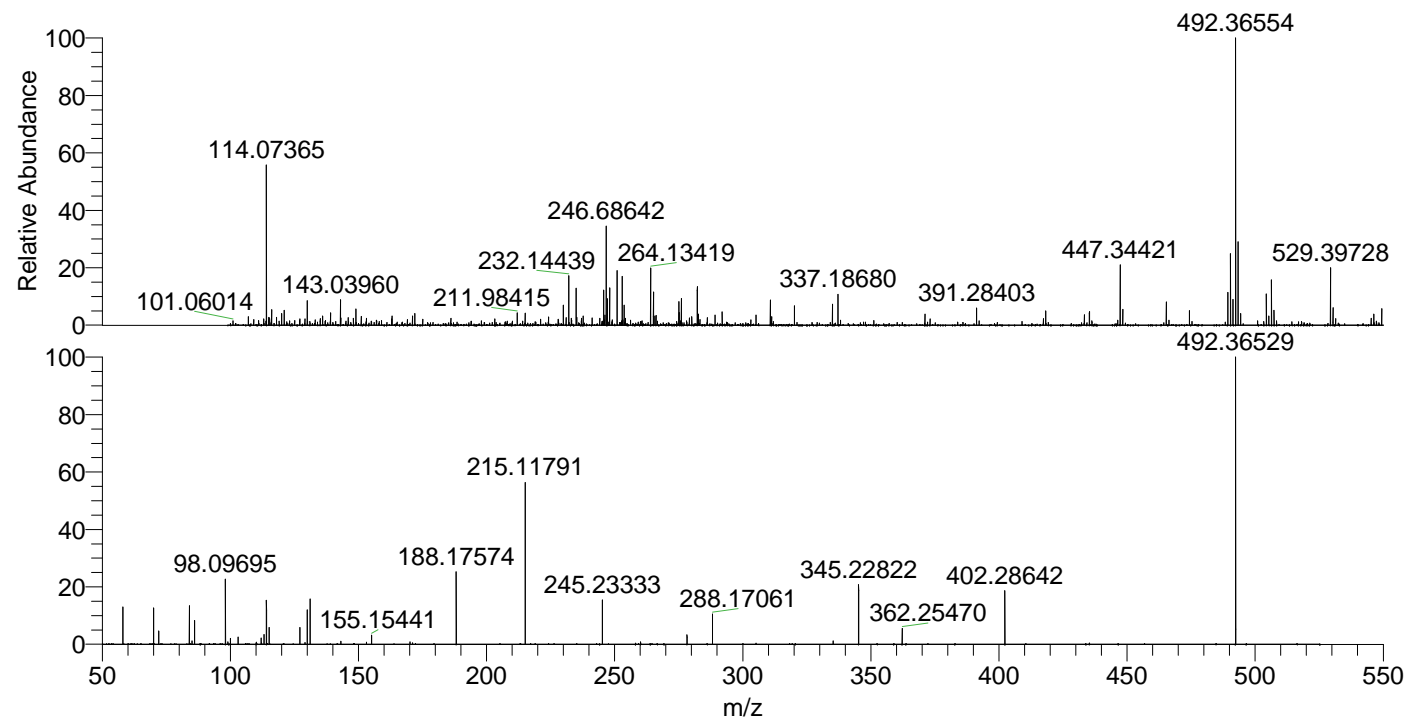
NL: 9.11E5
 Base Peak m/z= 246.68579-246.68825 F:
 FTMS + p ESI Full ms [100.00-1500.00]
 MS Aperta19

NL: 4.81E5
 Base Peak m/z= 50.00000-1500.00000 F:
 FTMS + p ESI d Full ms2
 492.37@hcd35.00 [50.00-520.00] MS
 Aperta19

Aperta19#3910-3945 RT: 9.63-9.71 AV:

F: FTMS + p ESI d Full ms2 492.37 ...
 m/z= 50.00000-1000.00000

m/z	Intensity	Relative
58.06599	35877.0	13.04
70.06591	35171.8	12.79
72.08151	12931.5	4.70
84.08150	37194.0	13.52
85.07648	3225.0	1.17
86.06068	22935.7	8.34
98.09695	62421.2	22.69
99.09209	2452.5	0.89
100.07627	5895.9	2.14
103.08703	7032.6	2.56
110.09700	2000.3	0.73
112.07630	5980.1	2.17
112.11261	1526.5	0.55
113.10777	9383.4	3.41
114.09166	42130.7	15.32
115.12343	16456.0	5.98
127.12328	15979.9	5.81
129.13901	1591.4	0.58
130.06540	33021.1	12.00
131.11791	44726.9	16.26
143.11783	3047.4	1.11
153.13892	2044.7	0.74
155.15441	8913.4	3.24
170.16521	2433.3	0.88
171.14880	1532.3	0.56
188.17574	69519.0	25.27
215.11791	155336.8	56.47
245.23333	42367.1	15.40
260.13925	2213.8	0.80
278.25566	9107.3	3.31
288.17061	28892.5	10.50
335.31283	3287.3	1.20
345.22822	57813.0	21.02
362.25470	15094.1	5.49
402.28642	52928.3	19.24
492.36529	275076.4	100.00



NL: 2.64E6
 Aperta19#3925 RT: 9.66
 AV: 1 T: FTMS + p ESI
 Full lock ms
 [100.00-1500.00]

NL: 2.75E5
 Aperta19#3907-3947
 RT: 9.63-9.71 AV: 7 F:
 FTMS + p ESI d Full ms2
 492.37@hcd35.00
 [50.00-520.00]