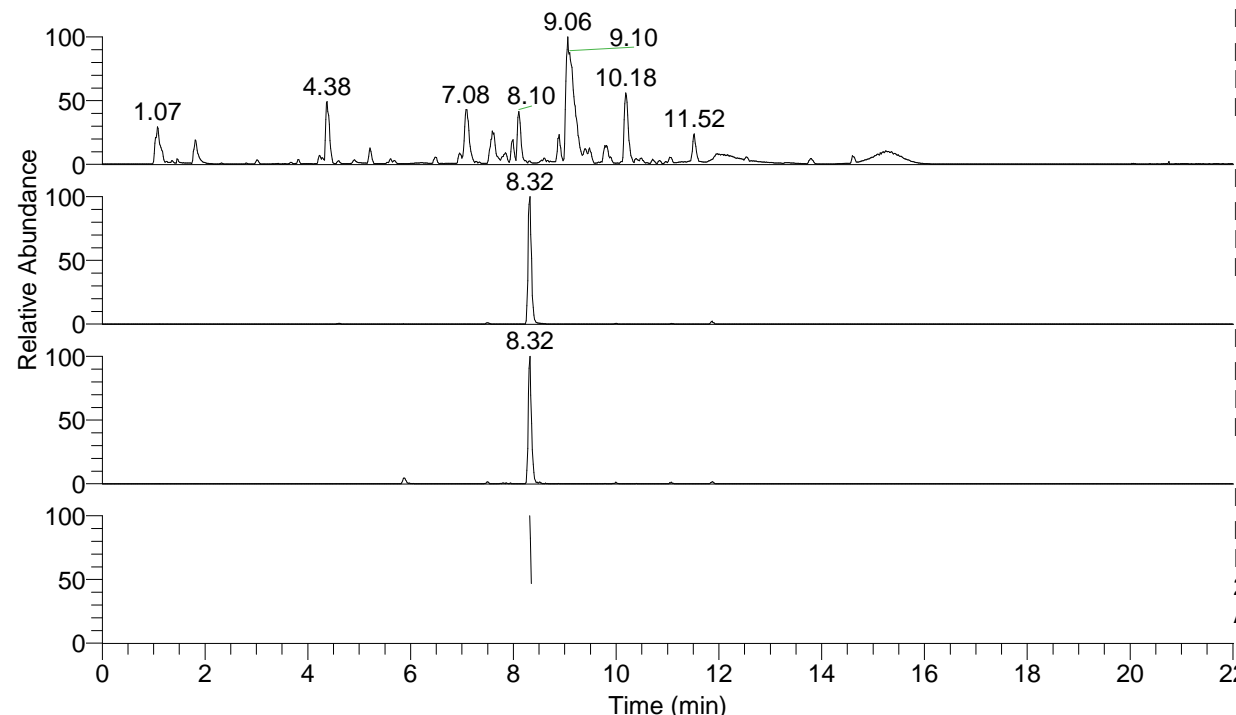


RT: 0.00 - 22.01



NL: 1.54E8  
 Base Peak m/z= 100.00000-1500.00000 F:  
 FTMS + p ESI Full ms [100.00-1500.00]  
 MS Aperta19

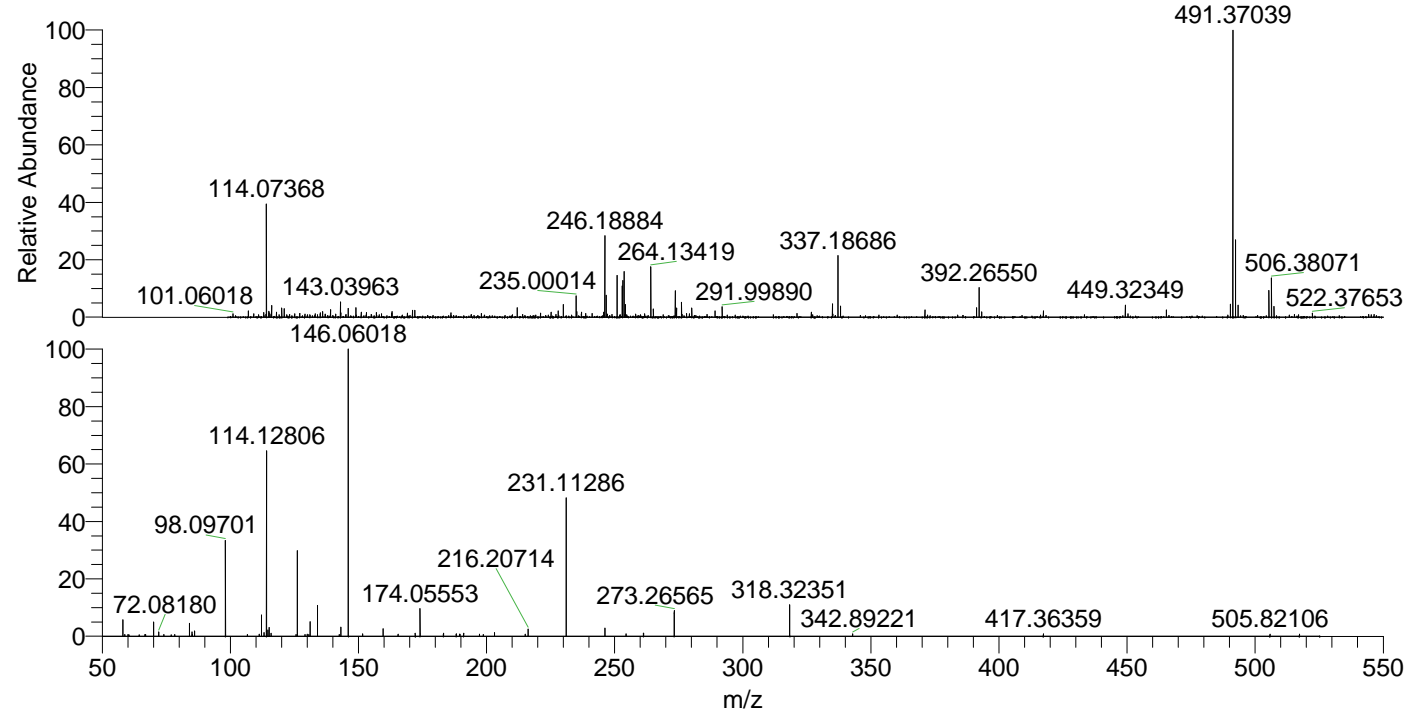
NL: 4.16E6  
 Base Peak m/z= 491.36850-491.37342 F:  
 FTMS + p ESI Full ms [100.00-1500.00]  
 MS Aperta19

NL: 1.19E6  
 Base Peak m/z= 246.18816-246.19062 F:  
 FTMS + p ESI Full ms [100.00-1500.00]  
 MS Aperta19

NL: 1.99E5  
 Base Peak m/z= 50.00000-1500.00000 F:  
 FTMS + p ESI d Full ms2  
 246.19@hcd35.00 [50.00-520.00] MS  
 Aperta19

Aperta19#3364-3378 RT: 8.32-8.35 AV:  
 F: FTMS + p ESI d Full ms2 246.19 ...  
 m/z= 50.00000-1000.00000

m/z	Intensity	Relative
58.06604	8451.0	5.75
58.79312	923.6	0.63
66.93866	973.4	0.66
70.06594	7323.5	4.98
72.08180	2310.0	1.57
78.34479	919.7	0.63
84.08178	6637.3	4.52
85.07684	2341.4	1.59
86.06086	1214.0	0.83
86.09729	2662.1	1.81
98.09701	49026.1	33.36
111.32391	1086.7	0.74
112.11281	11200.6	7.62
113.10743	1855.1	1.26
114.09165	2429.0	1.65
114.12806	95280.9	64.83
114.62587	3218.2	2.19
115.12358	4599.4	3.13
115.95934	1604.1	1.09
126.12796	45486.9	30.95
129.13855	1008.0	0.69
130.06545	1138.9	0.77
131.11785	7490.4	5.10
133.97038	15874.7	10.80
142.51780	931.1	0.63
143.15465	4885.6	3.32
146.04915	1576.8	1.07
146.06018	146964.0	100.00
151.66844	1347.8	0.92
159.66557	3910.4	2.66
165.45404	1034.4	0.70
172.18092	1508.5	1.03
174.05553	14729.4	10.02
183.18664	1557.4	1.06
188.17743	1100.1	0.75
188.21195	1276.5	0.87
189.49436	1051.0	0.72
189.66434	1071.6	0.73
191.05805	1568.9	1.07
191.08184	1114.4	0.76
197.22504	985.9	0.67
198.71053	958.0	0.65
203.08338	1958.5	1.33
215.11908	1133.3	0.77
216.20714	3671.5	2.50
231.11286	70794.7	48.17
246.18977	4323.8	2.94
254.43228	1164.5	0.79
261.26778	1591.2	1.08
273.26565	13388.3	9.11
318.32351	16129.7	10.98
342.89221	1181.1	0.80
417.36359	1282.3	0.87
505.82106	1123.8	0.76
517.31155	1043.5	0.71



NL: 4.06E6  
 Aperta19#3367 RT: 8.32  
 AV: 1 T: FTMS + p ESI  
 Full lock ms  
 [100.00-1500.00]

NL: 1.47E5  
 Aperta19#3356-3385  
 RT: 8.32-8.35 AV: 3 F:  
 FTMS + p ESI d Full ms2  
 246.19@hcd35.00  
 [50.00-520.00]