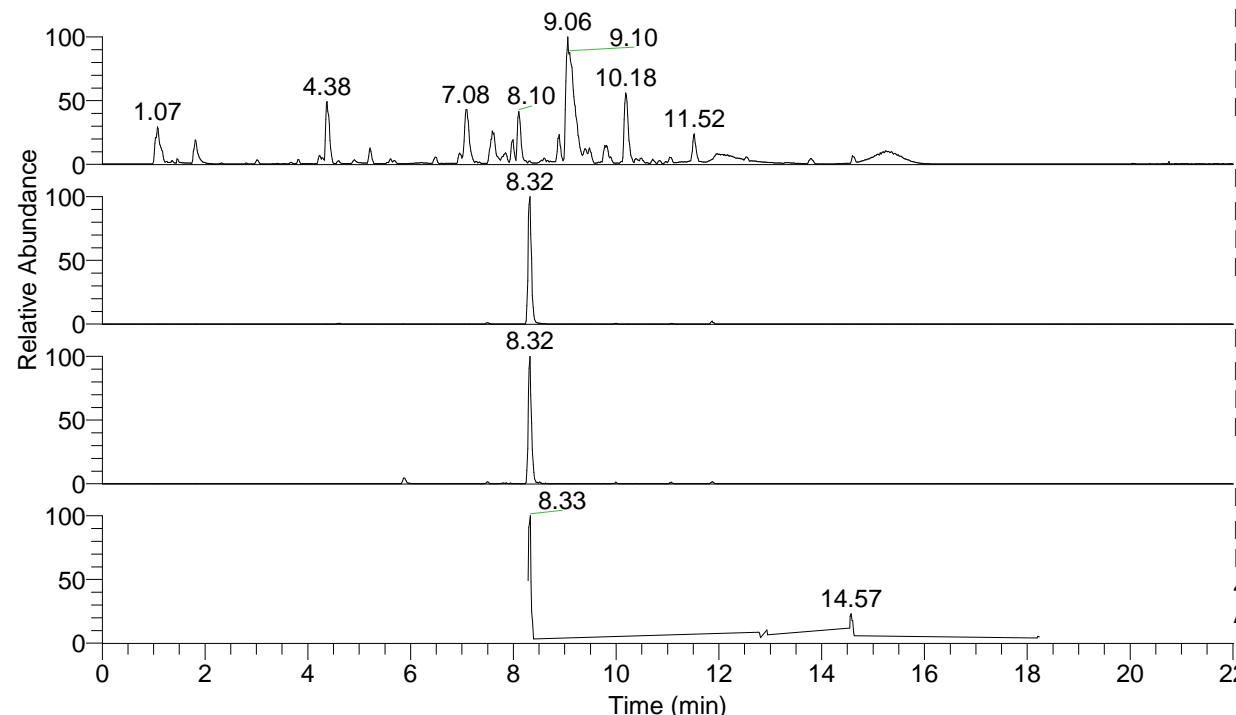


RT: 0.00 - 22.01



NL: 1.54E8  
 Base Peak m/z= 100.00000-1500.00000 F:  
 FTMS + p ESI Full ms [100.00-1500.00]  
 MS Aperta19

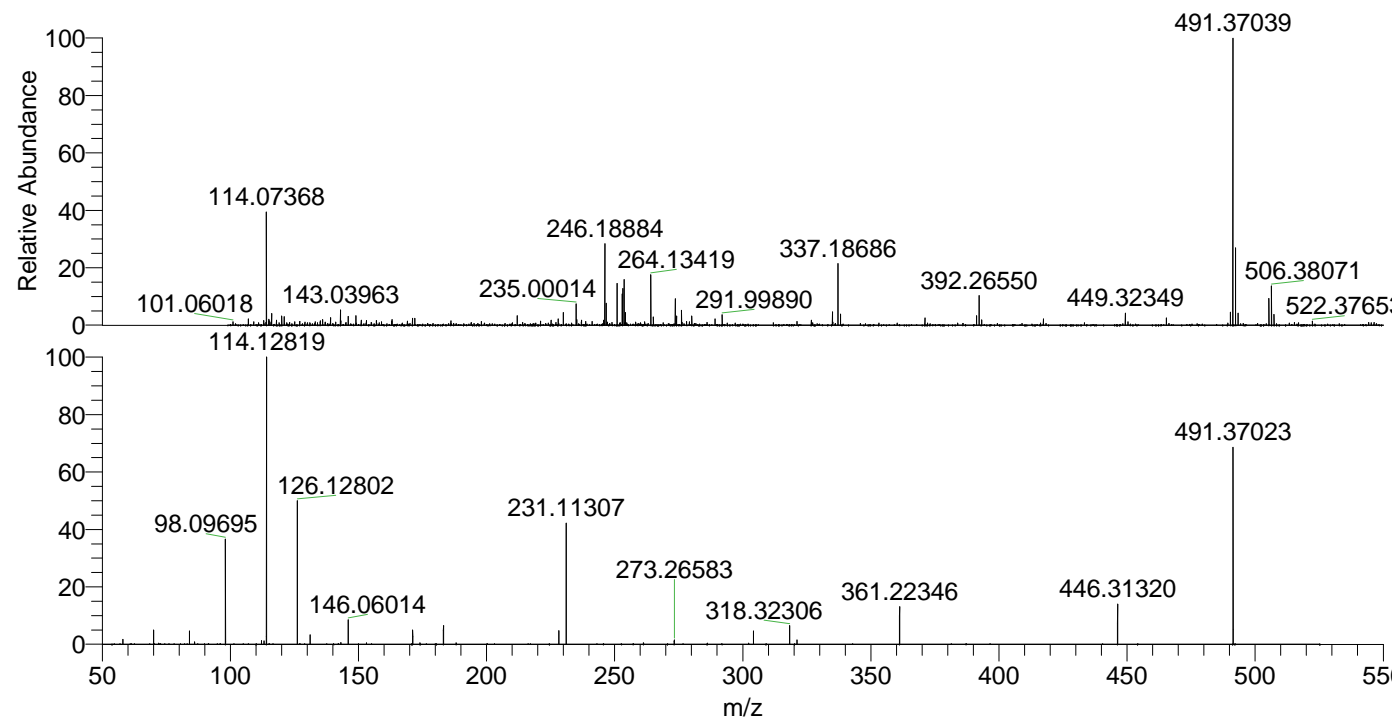
NL: 4.16E6  
 Base Peak m/z= 491.36850-491.37342 F:  
 FTMS + p ESI Full ms [100.00-1500.00]  
 MS Aperta19

NL: 1.19E6  
 Base Peak m/z= 246.18816-246.19062 F:  
 FTMS + p ESI Full ms [100.00-1500.00]  
 MS Aperta19

NL: 7.57E5  
 Base Peak m/z= 50.00000-1500.00000 F:  
 FTMS + p ESI d Full ms2  
 491.33@hcd35.00 [50.00-520.00] MS  
 Aperta19

Aperta19#3353-3386 RT: 8.29-8.37 AV:  
 F: FTMS + p ESI d Full ms2 491.33 ...  
 m/z= 50.00000-1000.00000

m/z	Intensity	Relative
58.06600	7830.2	1.78
70.06584	21603.3	4.91
84.08144	20488.1	4.66
86.09706	3916.7	0.89
98.09695	166641.6	37.91
112.11271	5777.1	1.31
113.10795	4934.5	1.12
114.09179	11644.0	2.65
114.12819	439614.6	100.00
126.12802	218838.4	49.78
131.11825	14521.3	3.30
143.15428	2847.5	0.65
146.06014	38391.7	8.73
171.18599	22049.7	5.02
183.18580	29077.7	6.61
228.24420	20943.7	4.76
231.11307	186506.2	42.42
231.13557	2741.6	0.62
261.26518	2362.3	0.54
273.26583	6799.5	1.55
304.16583	20378.6	4.64
318.32306	29079.8	6.61
321.19306	6605.4	1.50
361.22346	57728.6	13.13
446.31320	61261.4	13.94
491.37023	302638.3	68.84



NL: 4.06E6  
 Aperta19#3367 RT: 8.32  
 AV: 1 T: FTMS + p ESI  
 Full lock ms  
 [100.00-1500.00]

NL: 4.37E5  
 Aperta19#3350-3391  
 RT: 8.29-8.37 AV: 7 F:  
 FTMS + p ESI d Full ms2  
 491.33@hcd35.00  
 [50.00-520.00]