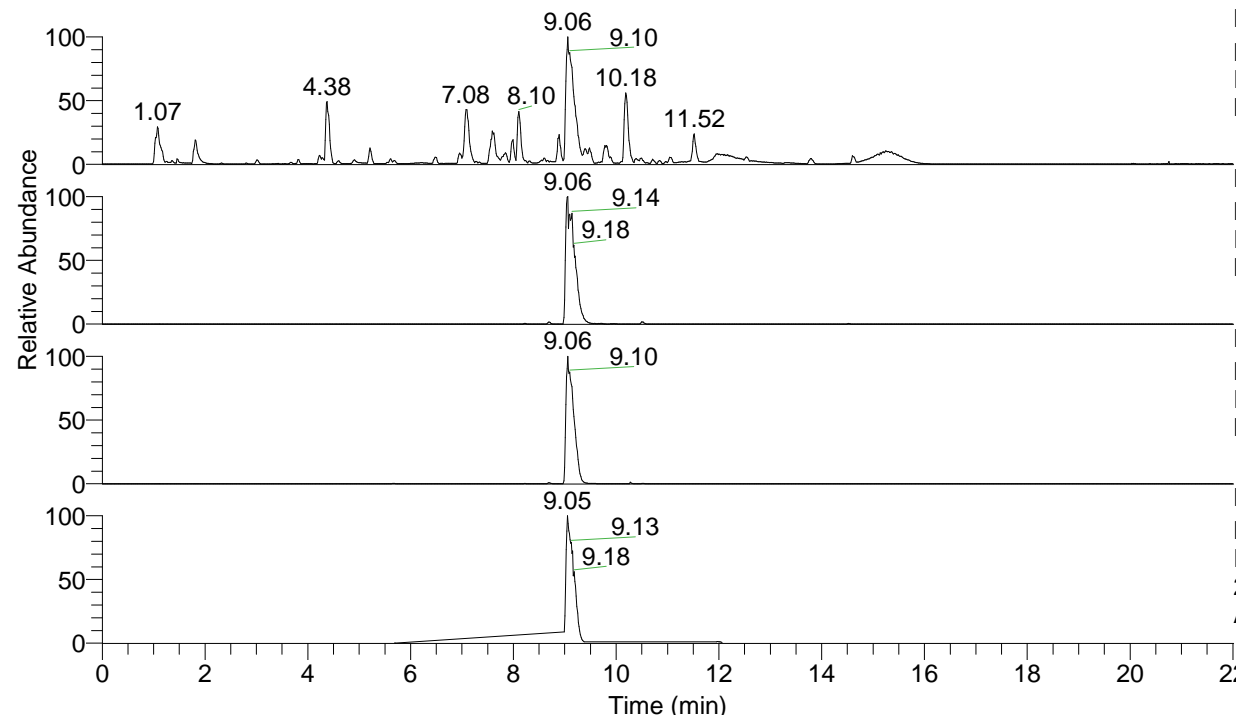


RT: 0.00 - 22.01



NL: 1.54E8
 Base Peak m/z= 100.00000-1500.00000 F:
 FTMS + p ESI Full ms [100.00-1500.00]
 MS Aperta19

NL: 1.32E8
 Base Peak m/z= 490.38450-490.38940 F:
 FTMS + p ESI Full ms [100.00-1500.00]
 MS Aperta19

NL: 1.54E8
 Base Peak m/z= 245.69616-245.69862 F:
 FTMS + p ESI Full ms [100.00-1500.00]
 MS Aperta19

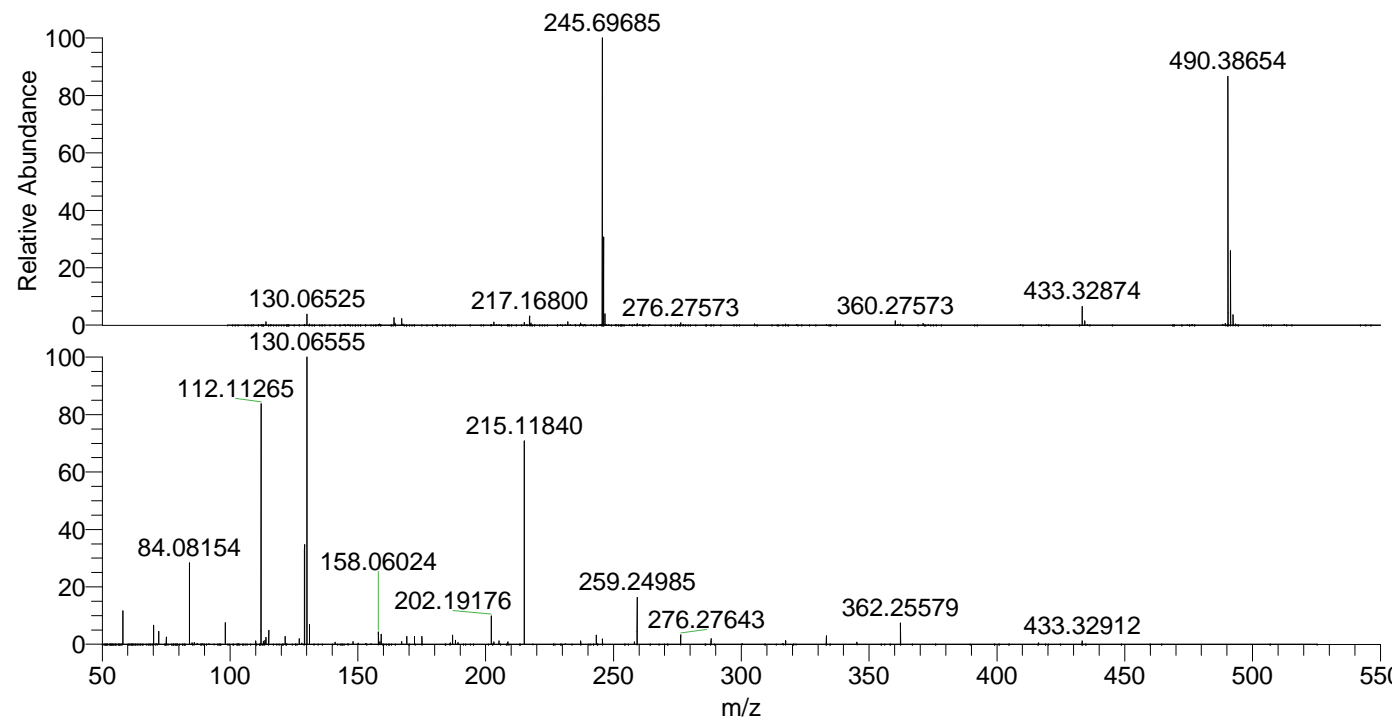
NL: 2.15E7
 Base Peak m/z= 50.00000-1500.00000 F:
 FTMS + p ESI d Full ms2
 245.68@hcd35.00 [50.00-520.00] MS
 Aperta19

Aaperta19#3635-3765 RT: 8.99-9.28 AV: 23

F: FTMS + p ESI d Full ms2 245.68@hc ...

m/z= 50.00000-1000.00000

m/z	Intensity	Relative
58.06612	1391323.0	11.72
70.06603	774284.5	6.52
72.08172	525158.8	4.42
75.09251	284411.2	2.40
84.08154	3314714.3	27.92
86.06076	76744.3	0.65
98.09712	878475.3	7.40
110.09695	133504.7	1.12
112.11265	9646091.0	81.25
113.10794	121364.4	1.02
113.61809	164465.0	1.39
114.09192	286462.4	2.41
115.12349	554879.9	4.67
121.61546	322134.0	2.71
127.12355	229698.2	1.93
129.13907	4089703.0	34.45
130.06555	11872458.0	100.00
130.12859	285076.5	2.40
131.11825	789173.9	6.65
141.13896	87350.2	0.74
148.14481	105744.7	0.89
158.06024	503716.3	4.24
158.65741	103462.8	0.87
159.09209	405269.5	3.41
167.17108	107786.7	0.91
169.17039	327475.4	2.76
172.18139	309556.3	2.61
175.06336	319536.0	2.69
175.08711	100480.6	0.85
186.19696	60424.1	0.51
187.08704	365010.9	3.07
188.17632	160953.5	1.36
189.20810	72538.4	0.61
202.19176	1137441.5	9.58
203.22354	90473.9	0.76
205.20276	129985.2	1.09
208.65541	93369.0	0.79
215.11840	8164639.0	68.77
237.18376	134933.4	1.14
243.25490	370601.2	3.12
245.69739	213805.1	1.80
258.16025	100198.8	0.84
259.24985	1926773.5	16.23
276.27643	398438.2	3.36
288.17125	221707.3	1.87
317.33933	148871.0	1.25
333.33409	346828.2	2.92
345.22893	79406.0	0.67
362.25579	867660.8	7.31
433.32912	132599.4	1.12



NL: 1.51E8
 Aaperta19#3667 RT: 9.06
 AV: 1 T: FTMS + p ESI
 Full ms [100.00-1500.00]

NL: 1.15E7
 Aaperta19#3630-3767
 RT: 8.99-9.28 AV: 23 F:
 FTMS + p ESI d Full ms2
 245.68@hcd35.00
 [50.00-520.00]