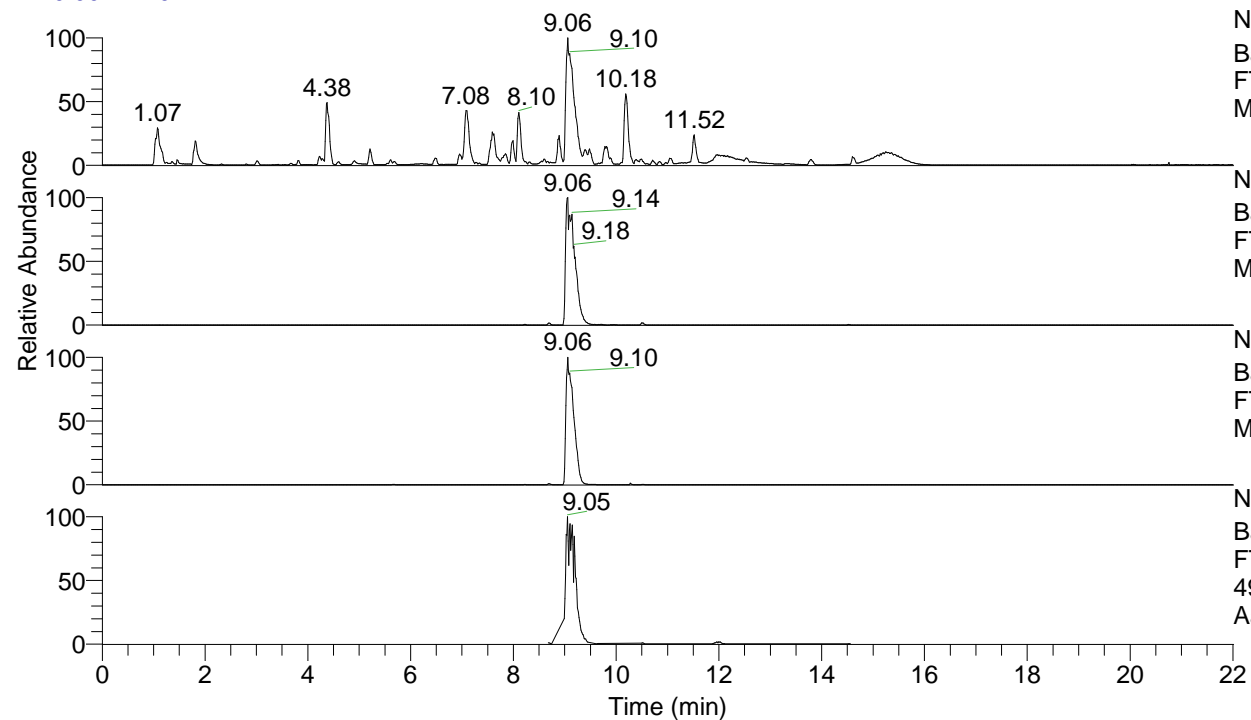


RT: 0.00 - 22.01



NL: 1.54E8
 Base Peak m/z= 100.00000-1500.00000 F:
 FTMS + p ESI Full ms [100.00-1500.00]
 MS Aperta19

NL: 1.32E8
 Base Peak m/z= 490.38450-490.38940 F:
 FTMS + p ESI Full ms [100.00-1500.00]
 MS Aperta19

NL: 1.54E8
 Base Peak m/z= 245.69616-245.69862 F:
 FTMS + p ESI Full ms [100.00-1500.00]
 MS Aperta19

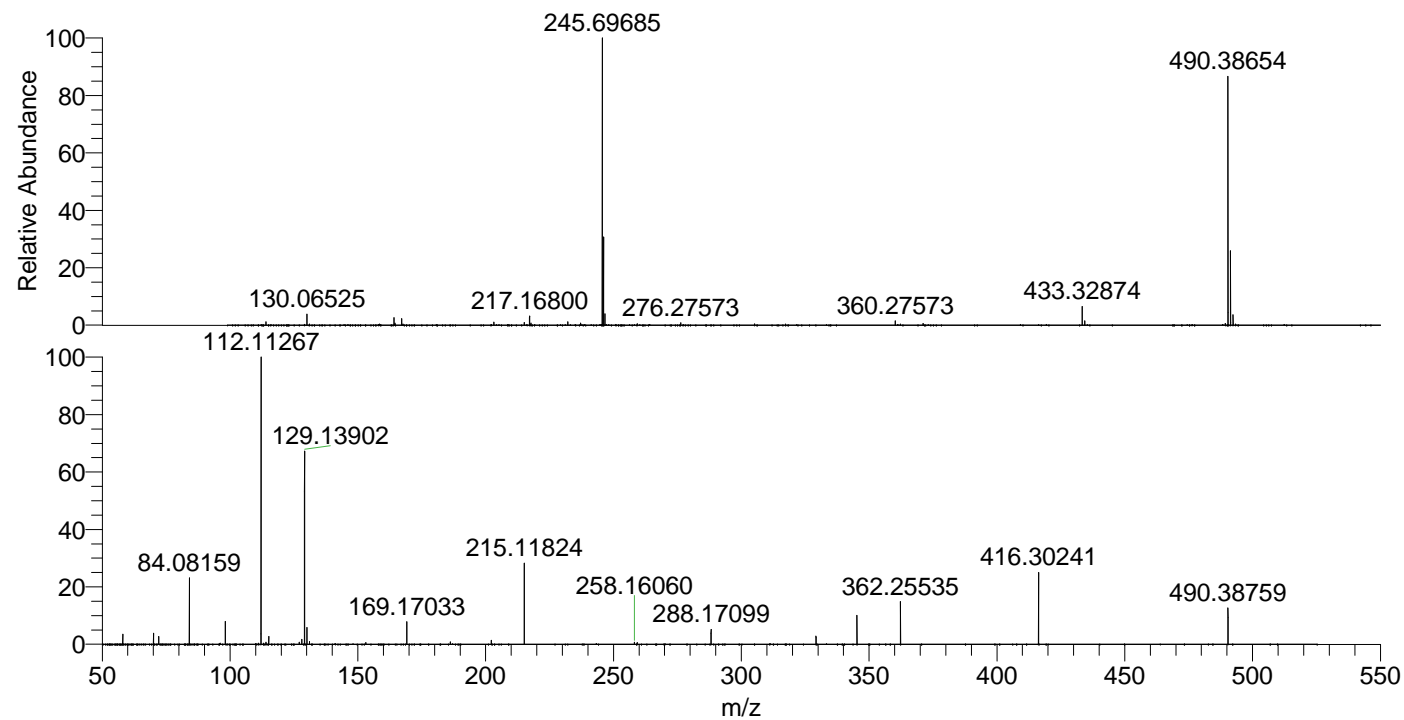
NL: 2.35E7
 Base Peak m/z= 50.00000-1500.00000 F:
 FTMS + p ESI d Full ms2
 490.35@hcd35.00 [50.00-520.00] MS
 Aperta19

Aaperta19#3634-3770 RT: 8.99-9.29 AV: 24

F: FTMS + p ESI d Full ms2 490.35@hc ...

m/z= 50.00000-1000.00000

m/z	Intensity	Relative
58.06608	450821.2	3.36
70.06604	493819.8	3.69
72.08160	367780.2	2.74
84.08159	3010758.3	22.47
98.09709	1045636.4	7.80
112.11267	13399522.0	100.00
114.09191	88765.8	0.66
115.12345	359956.9	2.69
127.12348	95120.6	0.71
128.10751	234259.9	1.75
129.13902	8756427.0	65.35
130.06548	753116.1	5.62
131.11840	119582.2	0.89
153.13910	77166.9	0.58
169.17033	1022675.6	7.63
186.19697	111082.2	0.83
202.19186	189379.6	1.41
215.11824	3704081.0	27.64
258.16060	100994.0	0.75
259.24991	76817.0	0.57
288.17099	677650.7	5.06
329.23426	369297.2	2.76
345.22898	1348441.4	10.06
362.25535	1939020.3	14.47
416.30241	3284588.8	24.51
490.38759	1670845.6	12.47



NL: 1.51E8
 Aaperta19#3667 RT: 9.06
 AV: 1 T: FTMS + p ESI
 Full ms [100.00-1500.00]

NL: 1.30E7
 Aaperta19#3629-3775
 RT: 8.99-9.29 AV: 24 F:
 FTMS + p ESI d Full ms2
 490.35@hcd35.00
 [50.00-520.00]