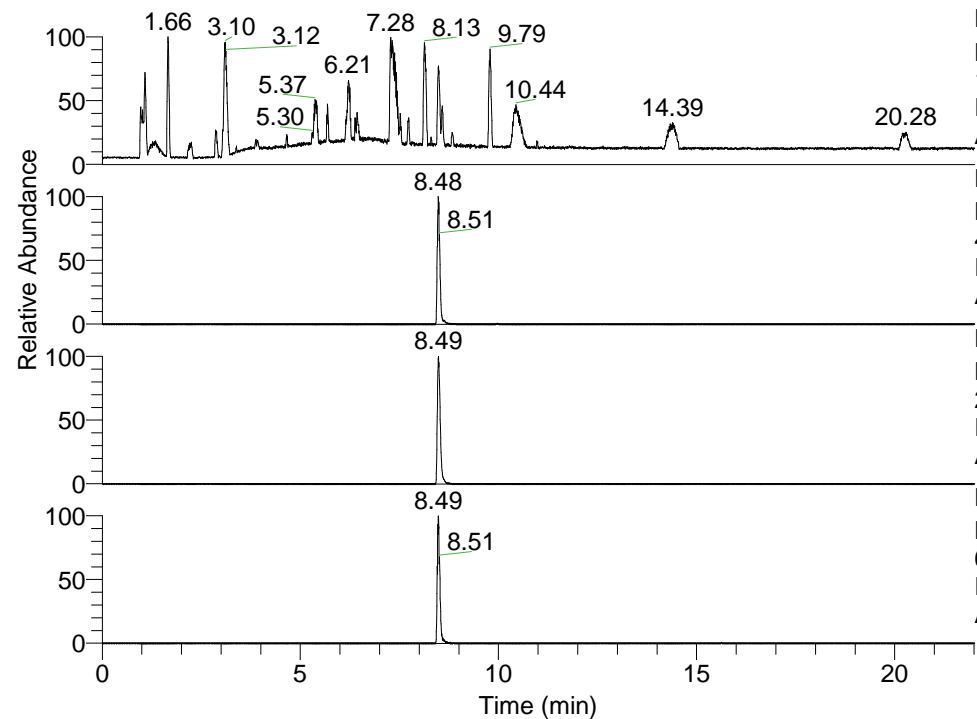


RT: 0.00 - 22.01



NL: 1.41E8
 Base Peak m/z=
 100.00000-1500.00000 F: FTMS + p
 ESI Full ms [100.00-1500.00] MS
 Aperta_HDX

NL: 5.68E7
 Base Peak m/z=
 494.42061-494.42555 F: FTMS + p
 ESI Full ms [100.00-1500.00] MS
 Aperta_HDX

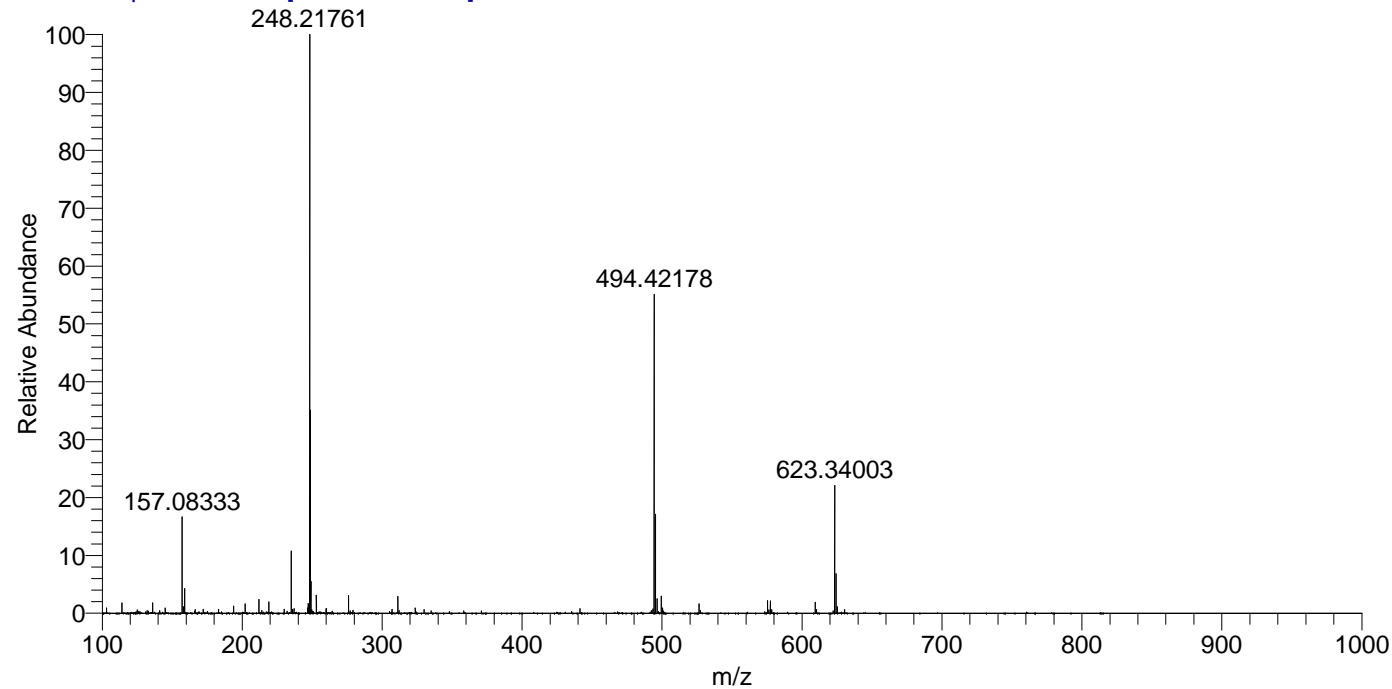
NL: 1.09E8
 Base Peak m/z=
 248.21735-248.21983 F: FTMS + p
 ESI Full ms [100.00-1500.00] MS
 Aperta_HDX

NL: 1.99E6
 Base Peak m/z=
 609.41917-609.42527 F: FTMS + p
 ESI Full ms [100.00-1500.00] MS
 Aperta_HDX

Aperta_HDX#1414 RT: 8.48
 T: FTMS + p ESI Full ms [100.00-1500.00]
 m/z= 494.00000-495.00000

| m/z | Intensity | Relative | Delta (ppm) | Composition |
|-----------|------------|----------|-------------|---|
| 494.42178 | 56845840.0 | 100.00 | -1.52 | C ₂₇ H ₄₄ ² H ₅ O ₂ N ₆ |
| | | | 1.61 | C ₂₇ H ₄₂ ² H ₆ O ₂ N ₆ |
| | | | -4.65 | C ₂₇ H ₄₆ ² H ₄ O ₂ N ₆ |
| | | | 4.74 | C ₂₇ H ₄₀ ² H ₇ O ₂ N ₆ |
| | | | -7.78 | C ₂₇ H ₄₈ ² H ₃ O ₂ N ₆ |
| | | | 7.87 | C ₂₇ H ₃₈ ² H ₈ O ₂ N ₆ |

Aperta_HDX #1414 RT: 8.48 AV: 1 NL: 1.01E8
 T: FTMS + p ESI Full ms [100.00-1500.00]



Aperta_HDX #1414 RT: 8.48 AV: 1 NL: 5.59E7
 T: FTMS + p ESI Full ms [100.00-1500.00]

