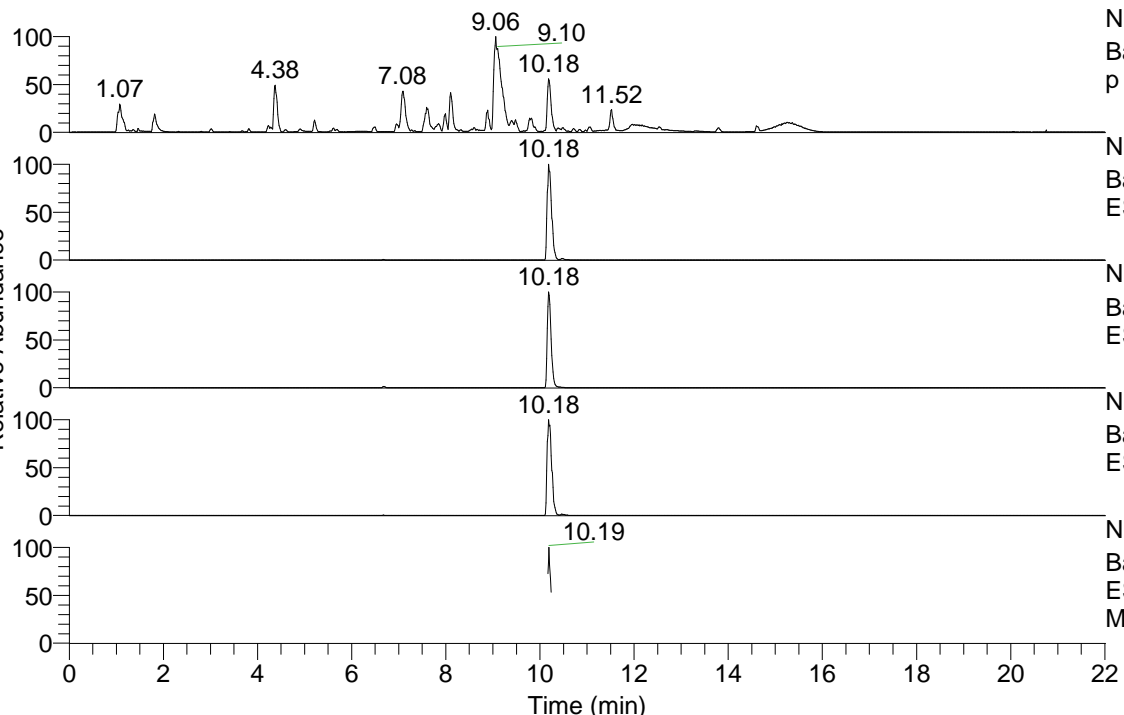


RT: 0.00 - 22.01



NL: 1.54E8  
 Base Peak m/z= 100.00000-1500.00000 F: FTMS + p ESI Full ms [100.00-1500.00] MS Aperta19

NL: 6.01E7  
 Base Peak m/z= 489.38925-489.39415 F: FTMS + p ESI Full ms [100.00-1500.00] MS Aperta19

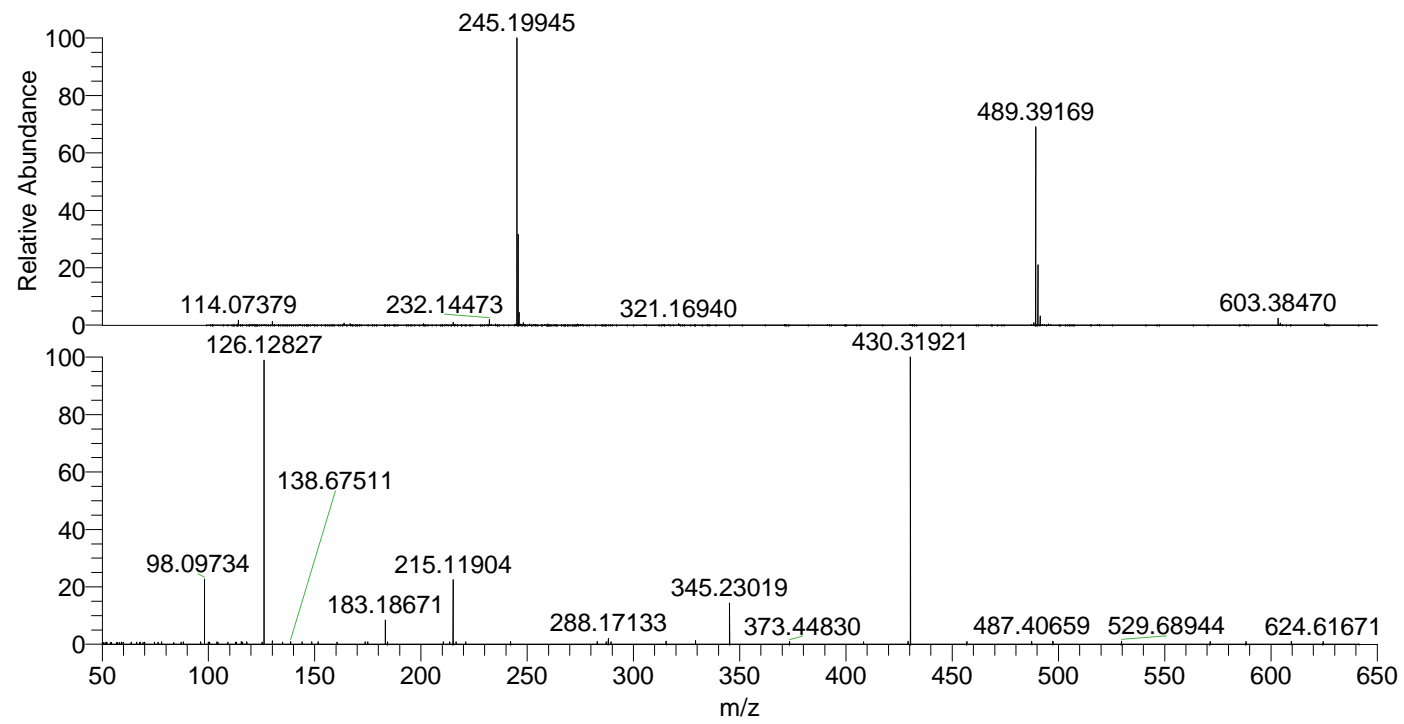
NL: 8.62E7  
 Base Peak m/z= 245.19853-245.20099 F: FTMS + p ESI Full ms [100.00-1500.00] MS Aperta19

NL: 2.11E6  
 Base Peak m/z= 603.38154-603.38758 F: FTMS + p ESI Full ms [100.00-1500.00] MS Aperta19

NL: 1.51E5  
 Base Peak m/z= 50.00000-1500.00000 F: FTMS + p ESI d Full ms2 603.38@hcd35.00 [50.00-635.00] MS Aperta19

Aperta19#4127-4158 RT: 10.17-10.24  
 F: FTMS + p ESI d Full ms2 603.38 ...  
 m/z= 50.00000-1000.00000

m/z	Intensity	Relative
77.99107	855.9	0.82
88.17449	857.3	0.82
96.38820	828.8	0.79
98.09734	23435.4	22.37
99.90095	768.5	0.73
100.18084	773.0	0.74
100.50642	761.3	0.73
103.96758	888.6	0.85
112.69871	807.0	0.77
115.44085	744.3	0.71
115.45324	971.4	0.93
118.02840	847.0	0.81
125.21086	797.4	0.76
126.12827	104784.6	100.00
126.21398	784.5	0.75
130.06612	1167.1	1.11
134.89124	783.8	0.75
138.67511	948.7	0.91
144.02328	913.7	0.87
148.54677	822.5	0.78
151.59314	900.0	0.86
160.44889	816.4	0.78
173.79188	846.1	0.81
175.00484	860.5	0.82
183.18671	8606.0	8.21
184.23206	900.8	0.86
210.45237	863.6	0.82
213.56874	927.9	0.89
215.11904	23332.9	22.27
215.37010	843.0	0.80
216.58795	902.4	0.86
221.08314	908.4	0.87
242.20530	1001.1	0.96
282.95056	960.9	0.92
287.21430	908.3	0.87
288.17133	2080.2	1.99
289.46659	889.8	0.85
315.40922	1173.9	1.12
329.23341	1326.5	1.27
345.23019	15046.0	14.36
373.44830	1023.0	0.98
408.31477	814.2	0.78
429.21605	1126.2	1.07
430.31921	104720.9	99.94
456.90808	1025.7	0.98
487.40659	1098.9	1.05
497.39969	1063.4	1.01
529.68944	1092.7	1.04
571.41123	996.5	0.95
588.29668	948.3	0.90
609.62423	977.8	0.93
624.61671	995.0	0.95



NL: 8.60E7  
 Aperta19#4135 RT:  
 10.18 AV: 1 T: FTMS + p ESI Full ms [100.00-1500.00]

NL: 1.03E5  
 Aperta19#4119-4159 RT:  
 10.17-10.24 AV: 6 F: FTMS + p ESI d Full ms2 603.38@hcd35.00 [50.00-635.00]