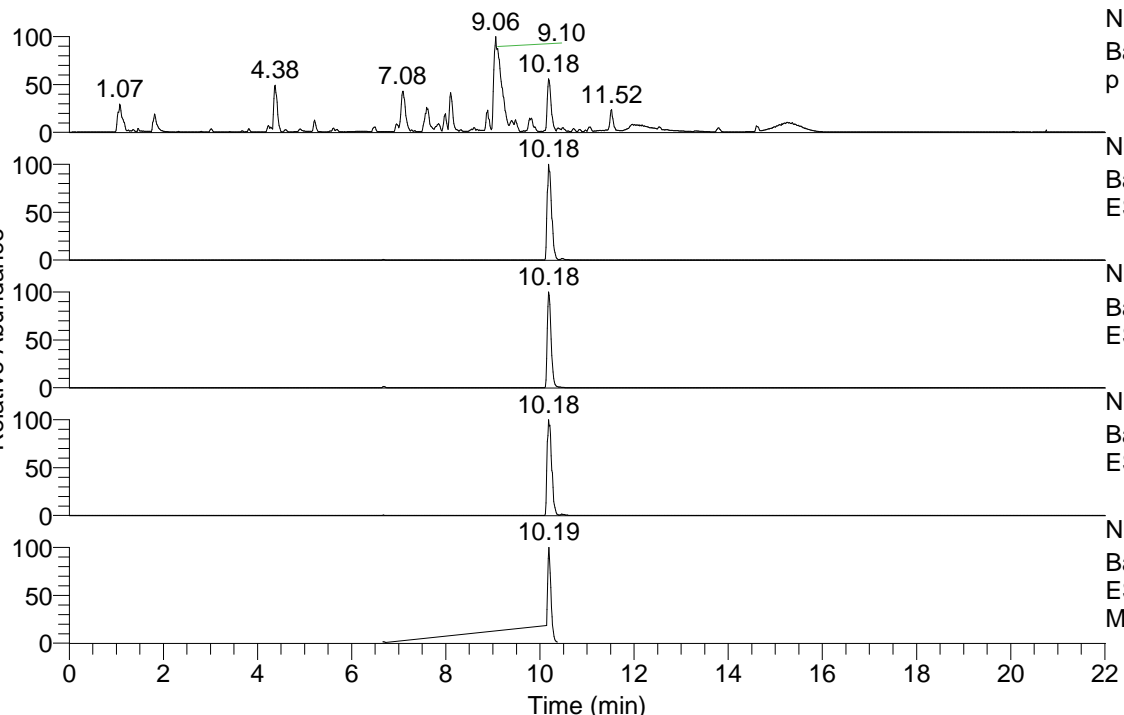


RT: 0.00 - 22.01



NL: 1.54E8
 Base Peak m/z= 100.00000-1500.00000 F: FTMS + p ESI Full ms [100.00-1500.00] MS Aperta19

NL: 6.01E7
 Base Peak m/z= 489.38925-489.39415 F: FTMS + p ESI Full ms [100.00-1500.00] MS Aperta19

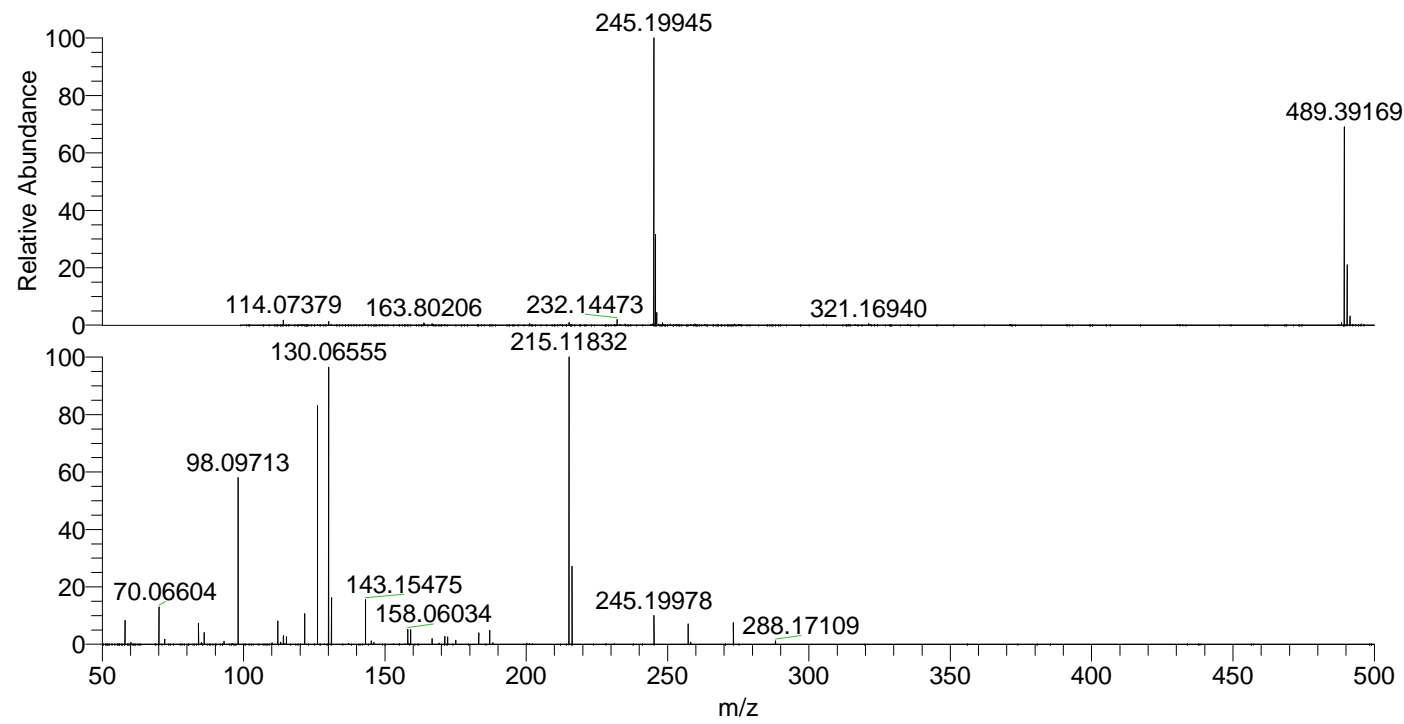
NL: 8.62E7
 Base Peak m/z= 245.19853-245.20099 F: FTMS + p ESI Full ms [100.00-1500.00] MS Aperta19

NL: 2.11E6
 Base Peak m/z= 603.38154-603.38758 F: FTMS + p ESI Full ms [100.00-1500.00] MS Aperta19

NL: 1.17E7
 Base Peak m/z= 50.00000-1500.00000 F: FTMS + p ESI d Full ms2 245.20@hcd35.00 [50.00-520.00] MS Aperta19

Aperta19#4115-4172 RT: 10.14-10.27 AV: 1
 F: FTMS + p ESI d Full ms2 245.20@hcd35.00 [50.00-520.00] MS Aperta19

m/z	Intensity	Relative
58.06612	495435.0	8.27
60.08173	39514.5	0.66
70.06604	768549.8	12.83
72.08167	103255.5	1.72
84.08163	433599.9	7.24
85.07688	34309.2	0.57
86.06092	84896.2	1.42
86.09732	243765.7	4.07
93.10491	60346.2	1.01
98.09713	3478133.5	58.07
112.11271	497692.2	8.31
113.10802	45163.1	0.75
114.09204	184974.9	3.09
115.12366	162031.7	2.71
121.63372	628242.9	10.49
126.12826	4936568.0	82.41
130.06555	5720543.0	95.50
131.11840	974332.4	16.27
143.15475	929275.4	15.51
145.17027	67833.5	1.13
146.06024	35692.4	0.60
158.06034	309241.7	5.16
159.09193	307083.8	5.13
166.67327	115047.6	1.92
171.18604	162188.3	2.71
172.18137	151877.3	2.54
175.06364	68498.0	1.14
175.08703	85414.8	1.43
183.18637	234604.2	3.92
187.08698	296944.4	4.96
188.17654	33483.0	0.56
215.11832	5989993.5	100.00
216.20773	1616700.3	26.99
245.19978	592692.9	9.89
257.27023	423026.5	7.06
258.16100	40911.7	0.68
273.26514	449082.8	7.50
288.17109	67488.0	1.13



NL: 8.60E7
 Aperta19#4135 RT: 10.18 AV: 1 T: FTMS + p ESI Full ms [100.00-1500.00]

NL: 5.93E6
 Aperta19#4110-4178 RT: 10.14-10.27 AV: 11 F: FTMS + p ESI d Full ms2 245.20@hcd35.00 [50.00-520.00]