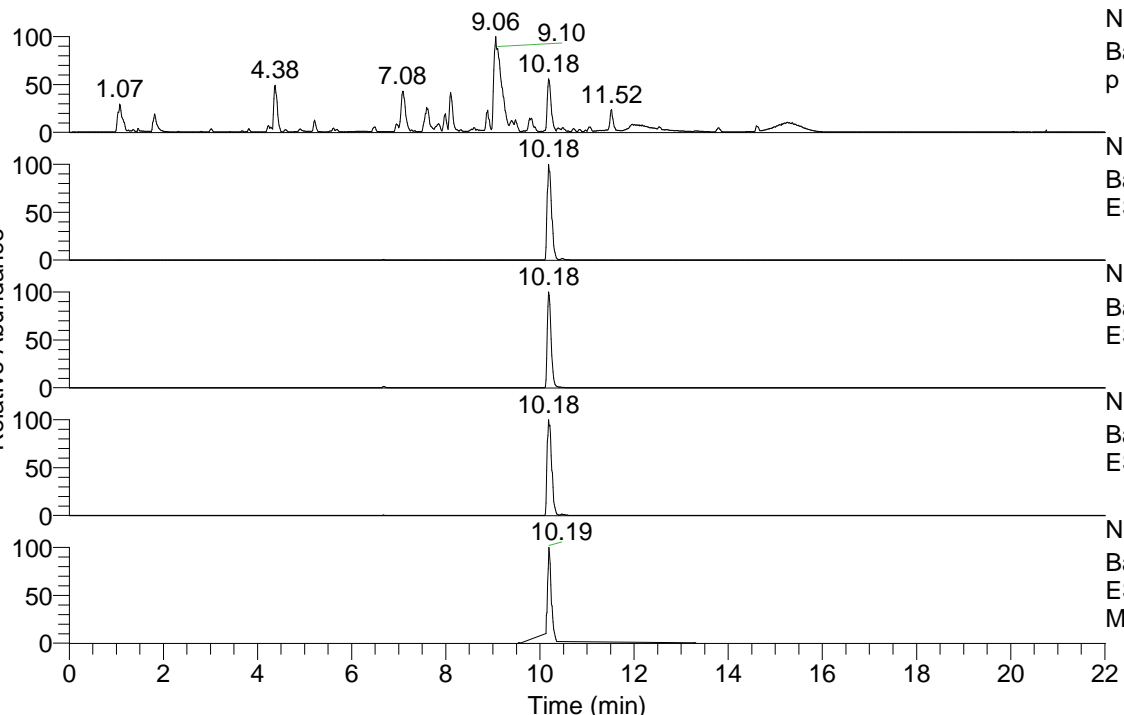


RT: 0.00 - 22.01



NL: 1.54E8  
 Base Peak m/z= 100.00000-1500.00000 F: FTMS + p ESI Full ms [100.00-1500.00] MS Aperta19

NL: 6.01E7  
 Base Peak m/z= 489.38925-489.39415 F: FTMS + p ESI Full ms [100.00-1500.00] MS Aperta19

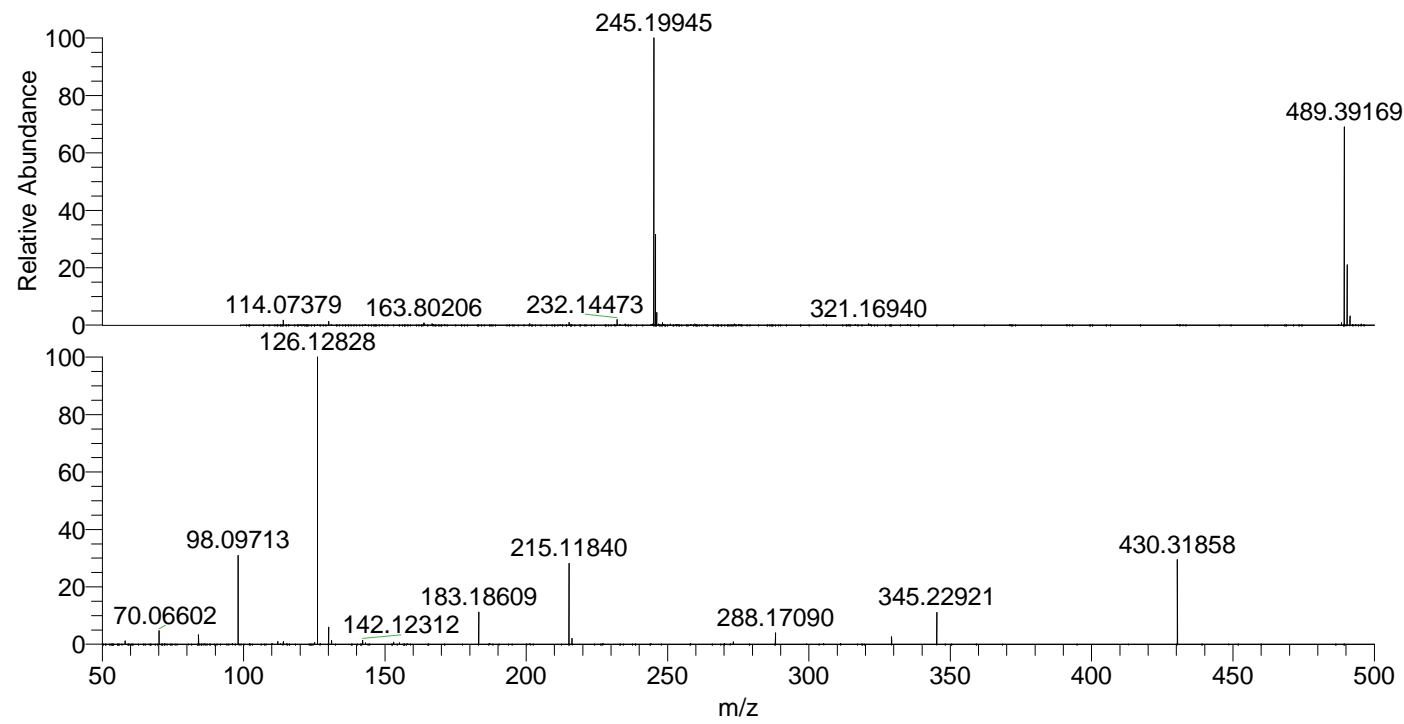
NL: 8.62E7  
 Base Peak m/z= 245.19853-245.20099 F: FTMS + p ESI Full ms [100.00-1500.00] MS Aperta19

NL: 2.11E6  
 Base Peak m/z= 603.38154-603.38758 F: FTMS + p ESI Full ms [100.00-1500.00] MS Aperta19

NL: 1.82E7  
 Base Peak m/z= 50.00000-1500.00000 F: FTMS + p ESI d Full ms2 489.32@hcd35.00 [50.00-515.00] MS Aperta19

Aaperta19#4109-4184 RT: 10.13-10.29 AV: F: FTMS + p ESI d Full ms2 489.32@h ...  
 m/z= 50.00000-1000.00000

m/z	Intensity	Relative
58.06604	95296.3	1.12
70.06602	399622.1	4.72
84.08158	282201.9	3.33
98.09713	2676296.5	31.58
112.11265	79442.6	0.94
114.09189	77767.0	0.92
125.12031	50187.3	0.59
126.12828	8474716.0	100.00
130.06550	507204.1	5.98
131.11848	107088.5	1.26
142.12312	127065.6	1.50
153.13917	58927.5	0.70
155.15473	46258.0	0.55
183.18609	946978.6	11.17
215.11840	2434834.5	28.73
216.20768	170590.1	2.01
273.26560	75828.9	0.89
288.17090	341084.8	4.02
329.23427	222424.7	2.62
345.22921	971835.4	11.47
430.31858	2502511.3	29.53



NL: 8.60E7  
 Aaperta19#4135 RT: 10.18 AV: 1 T: FTMS + p ESI Full ms [100.00-1500.00]

NL: 8.47E6  
 Aaperta19#4107-4188 RT: 10.13-10.29 AV: 14 F: FTMS + p ESI d Full ms2 489.32@hcd35.00 [50.00-515.00]