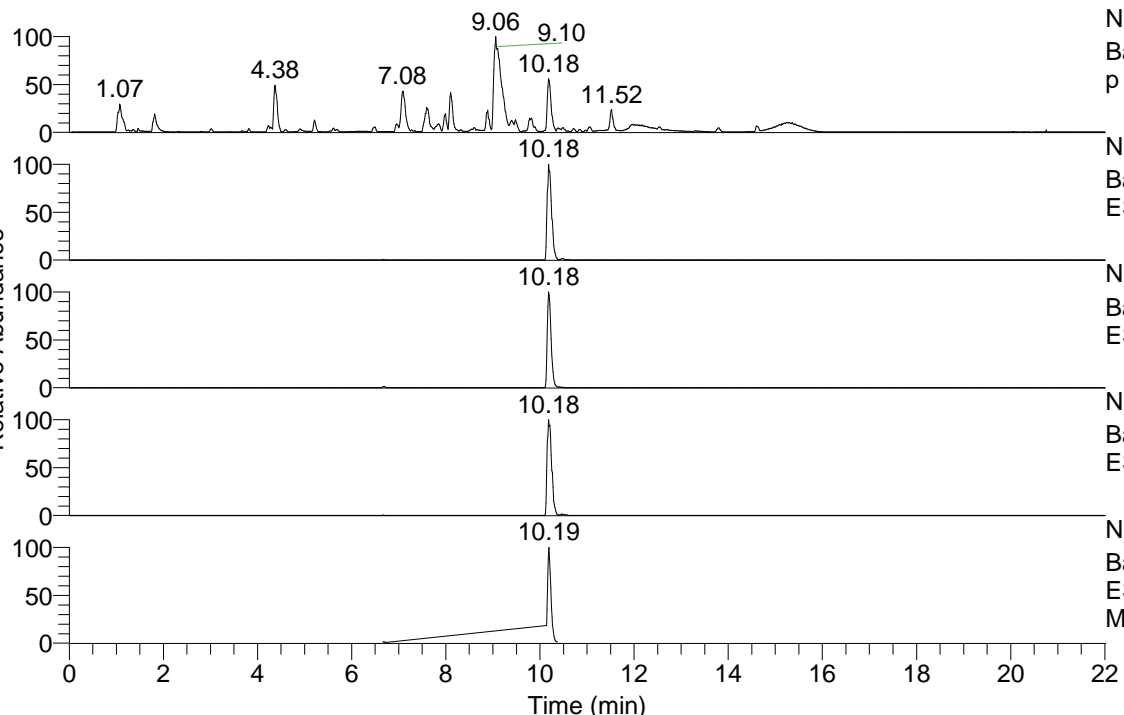


RT: 0.00 - 22.01



NL: 1.54E8  
 Base Peak m/z= 100.00000-1500.00000 F: FTMS + p ESI Full ms [100.00-1500.00] MS Aperta19

NL: 6.01E7  
 Base Peak m/z= 489.38925-489.39415 F: FTMS + p ESI Full ms [100.00-1500.00] MS Aperta19

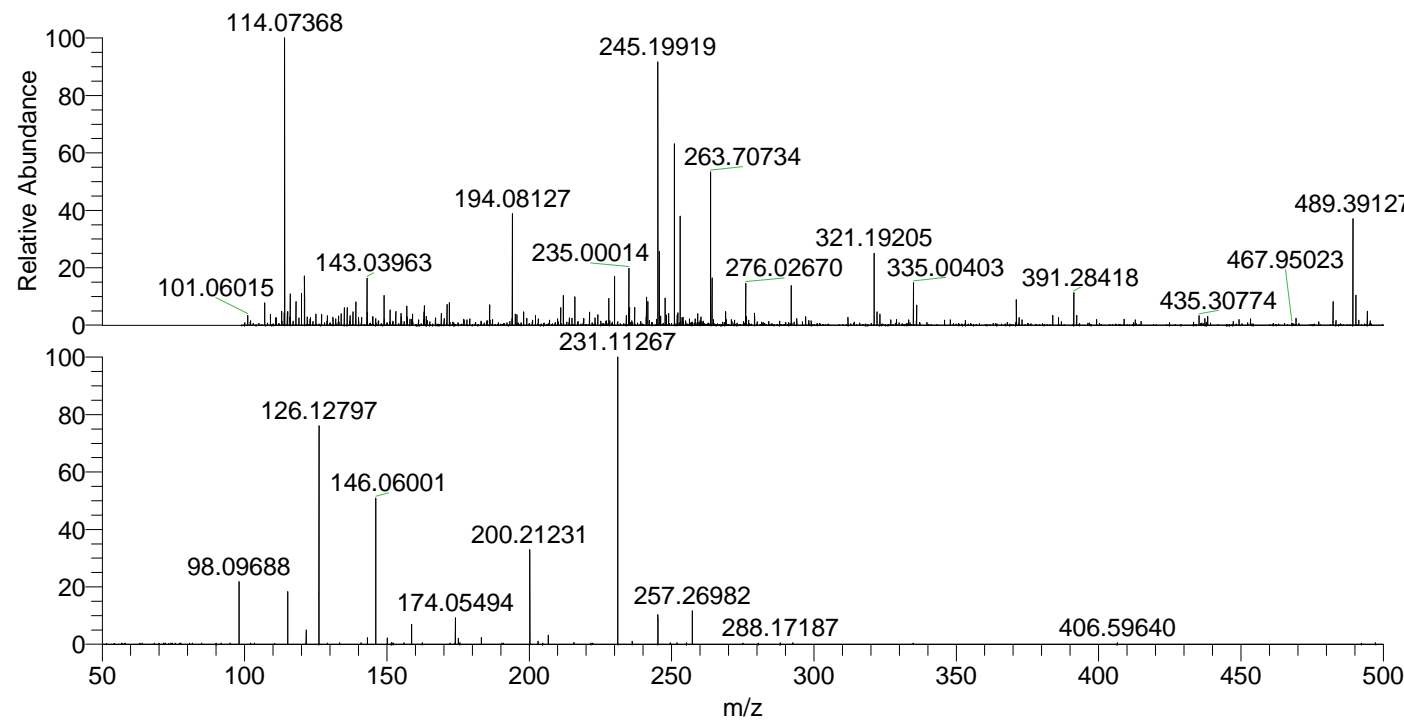
NL: 8.62E7  
 Base Peak m/z= 245.19853-245.20099 F: FTMS + p ESI Full ms [100.00-1500.00] MS Aperta19

NL: 2.11E6  
 Base Peak m/z= 603.38154-603.38758 F: FTMS + p ESI Full ms [100.00-1500.00] MS Aperta19

NL: 1.17E7  
 Base Peak m/z= 50.00000-1500.00000 F: FTMS + p ESI d Full ms2 245.20@hcd35.00 [50.00-520.00] MS Aperta19

Aperta19#2687-2709 RT: 6.66-6.72 AV: F: FTMS + p ESI d Full ms2 245.20 ... m/z= 50.00000-1000.00000

m/z	Intensity	Relative
98.09688	31311.8	21.37
115.12332	26692.0	18.22
121.63353	7153.1	4.88
126.12797	109449.3	74.70
143.15466	3207.0	2.19
146.06001	72950.8	49.79
150.16230	3272.8	2.23
151.69475	822.7	0.56
158.67580	10326.5	7.05
162.44644	764.0	0.52
174.05494	13628.7	9.30
175.08679	2978.6	2.03
183.18608	3369.6	2.30
200.21231	48647.3	33.20
203.08231	1563.9	1.07
206.65764	4698.6	3.21
215.66333	886.2	0.60
231.11267	146517.7	100.00
236.19354	1504.8	1.03
245.19984	14730.6	10.05
257.26982	16735.8	11.42
288.17187	785.3	0.54
406.59640	771.0	0.53



NL: 1.23E6  
 Aperta19#2689 RT: 6.67 AV: 1 T: FTMS + p ESI Full lock ms [100.00-1500.00]

NL: 1.43E5  
 Aperta19#2682-2713 RT: 6.66-6.72 AV: 5 F: FTMS + p ESI d Full ms2 245.20@hcd35.00 [50.00-520.00]