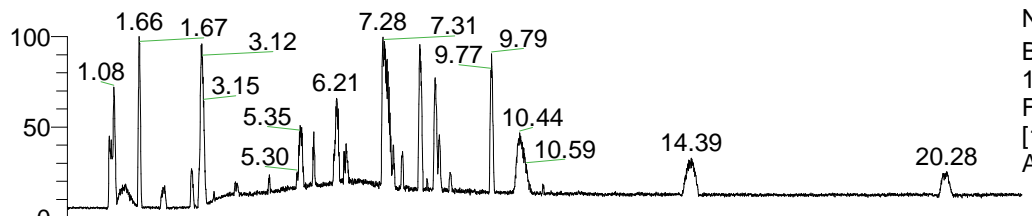


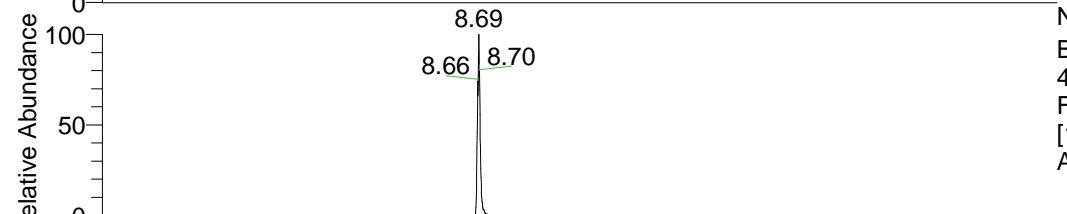
RT: 0.00 - 22.01



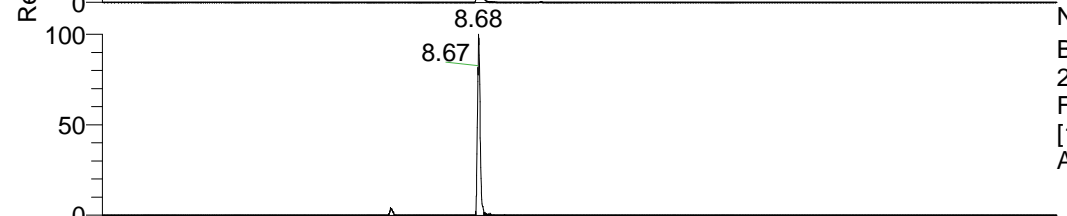
NL: 1.41E8
 Base Peak m/z=
 100.00000-1500.00000 F:
 FTMS + p ESI Full ms
 [100.00-1500.00] MS
 Aperta_HDX

Aaperta_HDX#1451 RT: 8.69
 T: FTMS + p ESI Full ms [100.00-1500.00]
 m/z = 481.00000-482.00000

m/z	Intensity	Relative	Delta (ppm)	Composition
481.41257	10924754.0	100.00	-1.24	C ₂₆ H ₄₁ ² H ₆ O ₂ N ₆
			1.98	C ₂₆ H ₃₉ ² H ₇ O ₂ N ₆
			-4.45	C ₂₆ H ₄₃ ² H ₅ O ₂ N ₆
			5.20	C ₂₆ H ₃₇ ² H ₈ O ₂ N ₆
			-7.67	C ₂₆ H ₄₅ ² H ₄ O ₂ N ₆
			8.41	C ₂₆ H ₃₅ ² H ₉ O ₂ N ₆

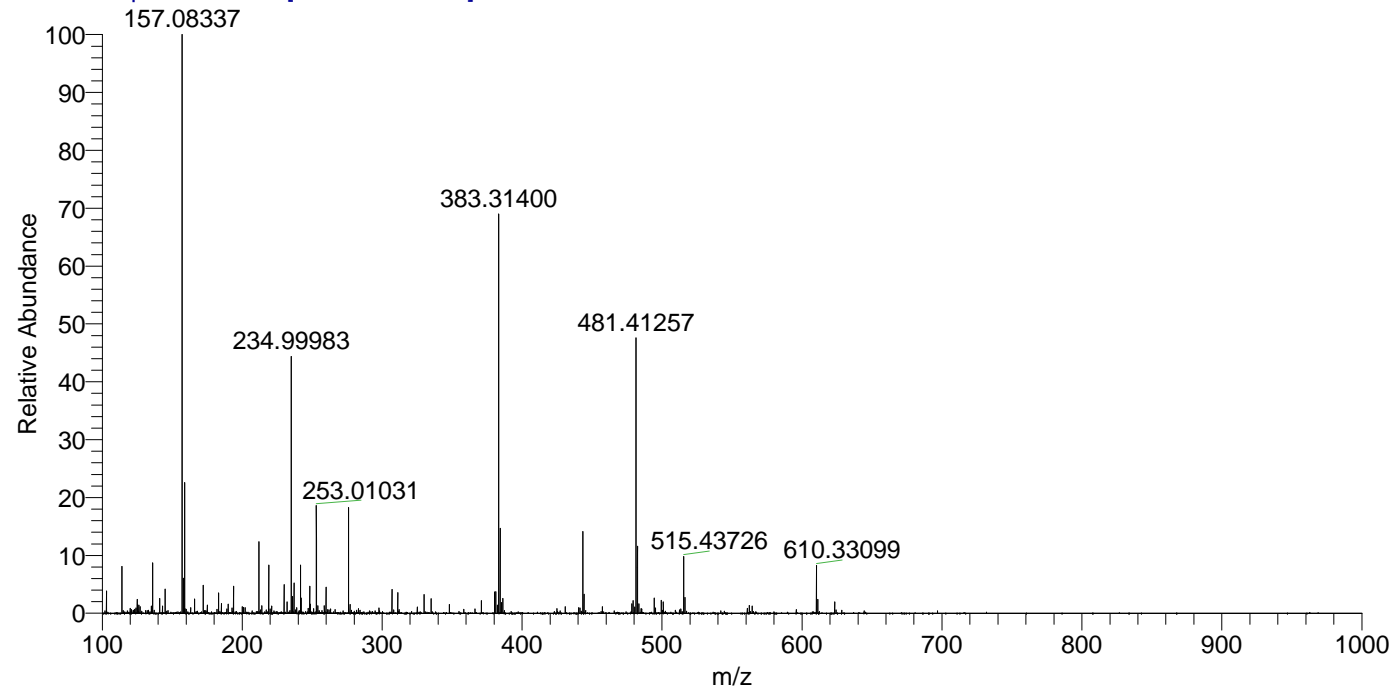


NL: 1.09E7
 Base Peak m/z=
 481.41130-481.41612 F:
 FTMS + p ESI Full ms
 [100.00-1500.00] MS
 Aperta_HDX



NL: 1.94E6
 Base Peak m/z=
 241.71270-241.71512 F:
 FTMS + p ESI Full ms
 [100.00-1500.00] MS
 Aperta_HDX

Aaperta_HDX #1451 RT: 8.69 AV: 1 NL: 2.20E7
 T: FTMS + p ESI Full ms [100.00-1500.00]



Aaperta_HDX #1451 RT: 8.69 AV: 1 NL: 1.05E7
 T: FTMS + p ESI Full ms [100.00-1500.00]

