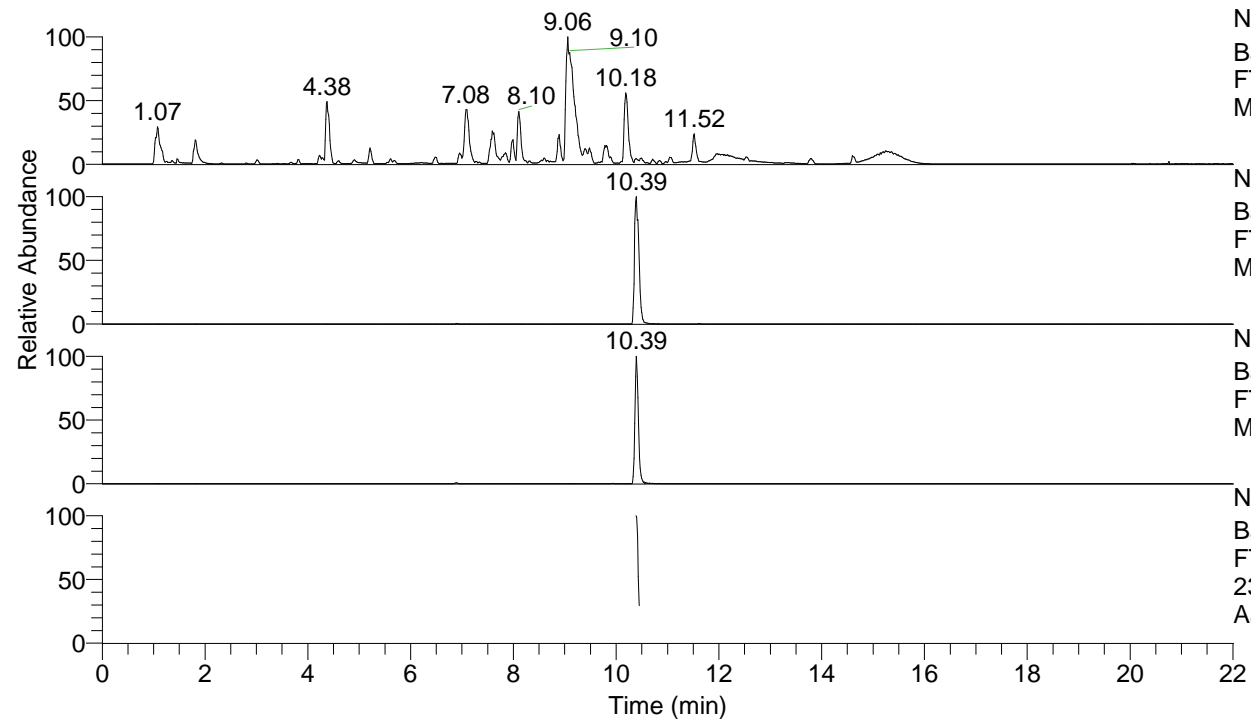


RT: 0.00 - 22.01



NL: 1.54E8
 Base Peak m/z= 100.00000-1500.00000 F:
 FTMS + p ESI Full ms [100.00-1500.00]
 MS Aperta19

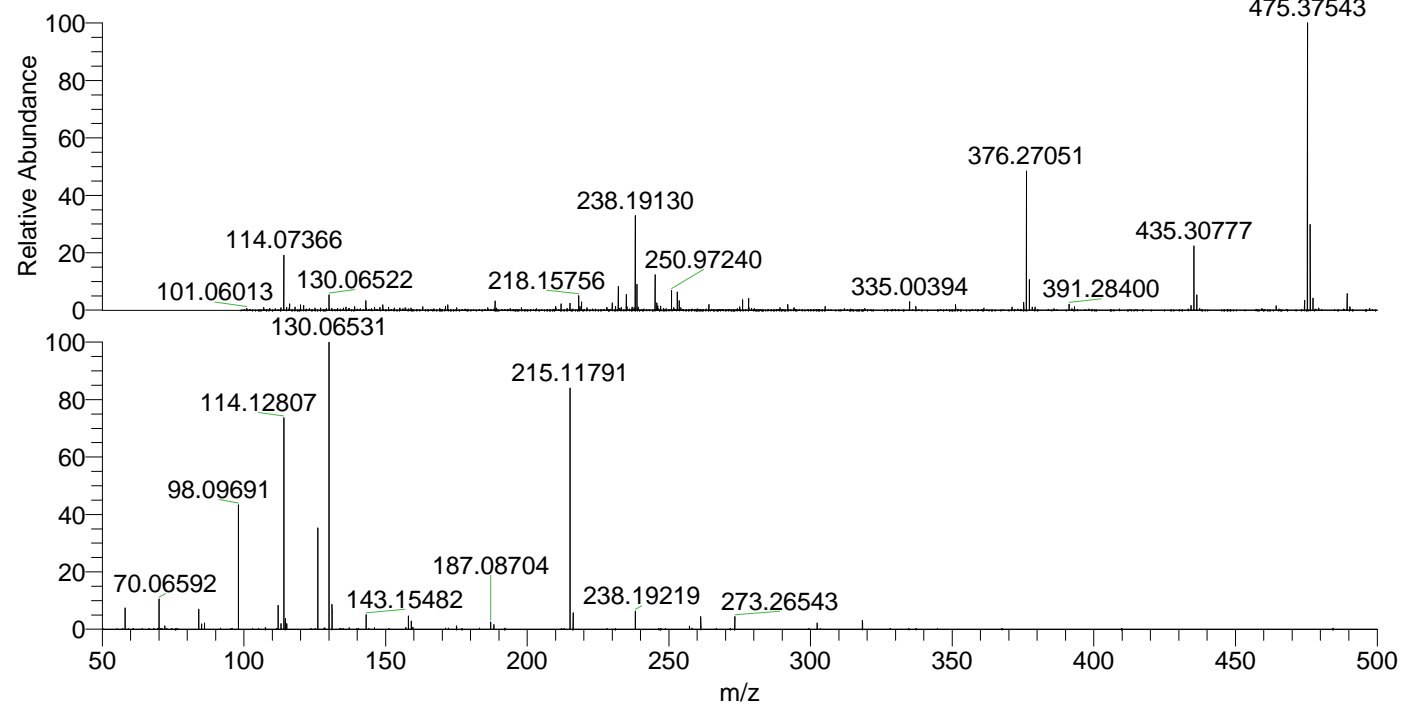
NL: 6.97E6
 Base Peak m/z= 475.37367-475.37843 F:
 FTMS + p ESI Full ms [100.00-1500.00]
 MS Aperta19

NL: 2.24E6
 Base Peak m/z= 238.19075-238.19313 F:
 FTMS + p ESI Full ms [100.00-1500.00]
 MS Aperta19

NL: 3.00E5
 Base Peak m/z= 50.00000-1500.00000 F:
 FTMS + p ESI d Full ms2
 238.19@hcd35.00 [50.00-505.00] MS
 Aperta19

Aperta19#4223-4248 RT: 10.39-10.45
 F: FTMS + p ESI d Full ms2 238.19 ...
 m/z= 50.00000-1000.00000

m/z	Intensity	Relative
58.06601	15417.6	7.41
70.06592	22109.8	10.62
72.08166	2567.6	1.23
84.08153	14539.4	6.99
85.07674	3984.0	1.91
86.06082	1951.7	0.94
86.09723	4662.6	2.24
98.09691	90327.0	43.41
107.61801	1286.5	0.62
112.11239	17527.2	8.42
113.10798	4159.7	2.00
114.09188	3391.5	1.63
114.12807	157888.0	75.87
114.13528	3624.8	1.74
114.62588	8035.6	3.86
115.12360	4269.2	2.05
126.12803	73794.8	35.46
130.06531	208100.2	100.00
131.11811	18505.3	8.89
131.15438	1258.8	0.60
143.15482	10571.2	5.08
157.17038	1247.3	0.60
158.06051	9648.1	4.64
159.09201	6011.8	2.89
159.66524	1433.6	0.69
175.06341	2554.6	1.23
175.08718	1388.3	0.67
187.08704	5441.5	2.61
188.21296	3468.4	1.67
215.11791	176758.3	84.94
216.20766	12033.3	5.78
238.19219	13158.5	6.32
257.27087	2227.2	1.07
261.26561	9176.5	4.41
273.26543	9129.9	4.39
302.32846	4456.5	2.14
318.32322	6598.6	3.17



NL: 6.61E6
 Aperta19#4225 RT:
 10.39 AV: 1 T: FTMS + p
 ESI Full lock ms
 [100.00-1500.00]

NL: 2.08E5
 Aperta19#4209-4253 RT:
 10.39-10.45 AV: 5 F:
 FTMS + p ESI d Full ms2
 238.19@hcd35.00
 [50.00-505.00]