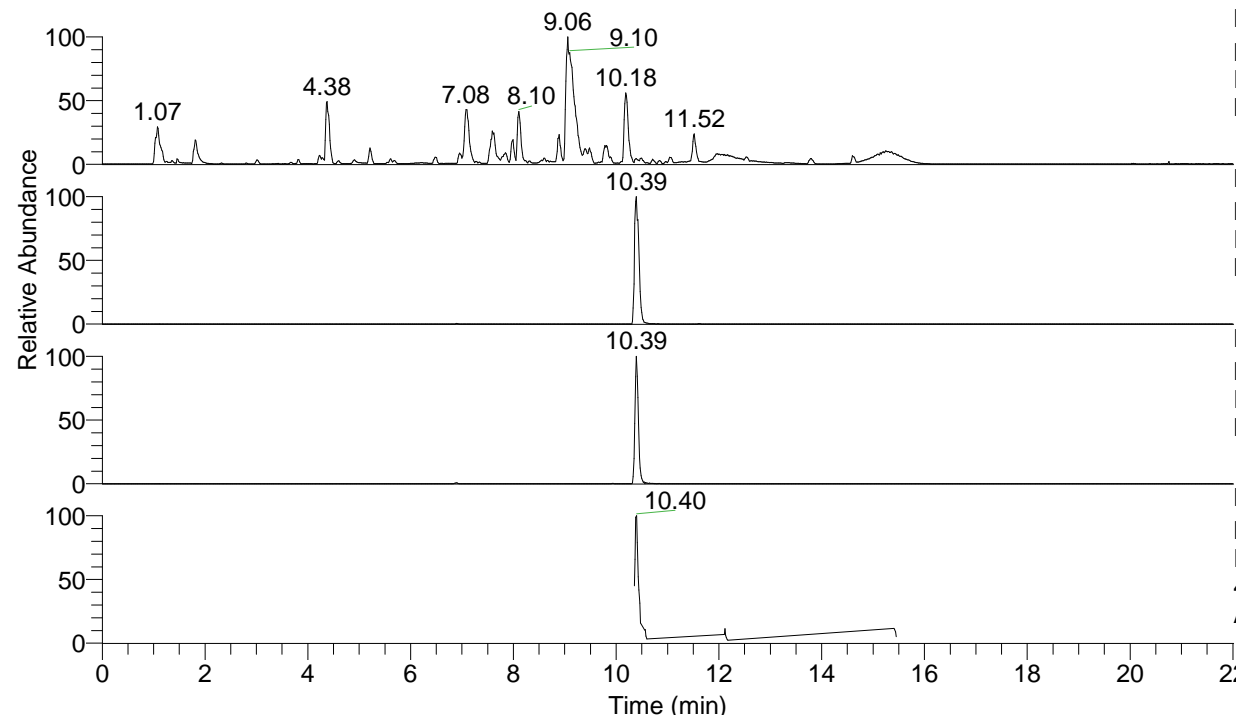


RT: 0.00 - 22.01



NL: 1.54E8
 Base Peak m/z= 100.00000-1500.00000 F:
 FTMS + p ESI Full ms [100.00-1500.00]
 MS Aperta19

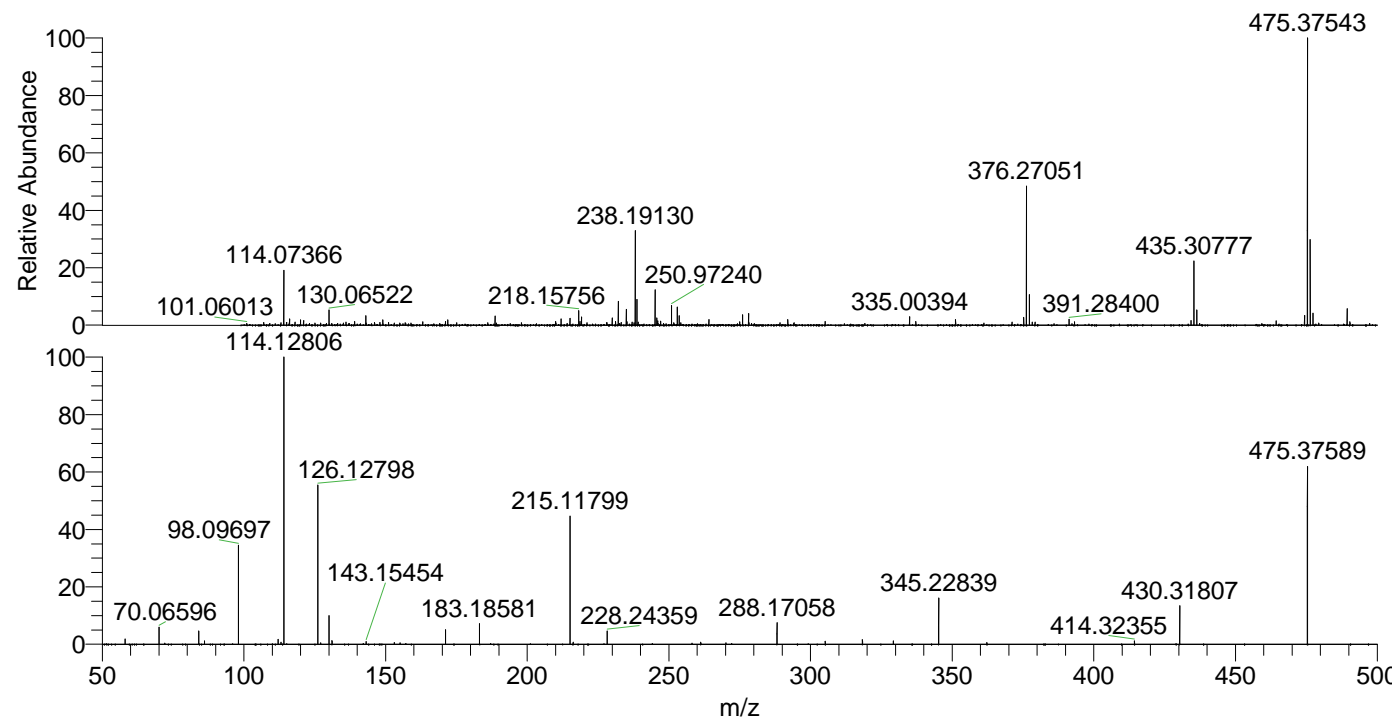
NL: 6.97E6
 Base Peak m/z= 475.37367-475.37843 F:
 FTMS + p ESI Full ms [100.00-1500.00]
 MS Aperta19

NL: 2.24E6
 Base Peak m/z= 238.19075-238.19313 F:
 FTMS + p ESI Full ms [100.00-1500.00]
 MS Aperta19

NL: 1.43E6
 Base Peak m/z= 50.00000-1500.00000 F:
 FTMS + p ESI d Full ms2
 475.34@hcd35.00 [50.00-505.00] MS
 Aperta19

Aperta19#4210-4238 RT: 10.36-10.43
 F: FTMS + p ESI d Full ms2 475.34 ...
 m/z= 50.00000-1000.00000

m/z	Intensity	Relative
58.06596	18941.8	1.91
70.06596	60054.6	6.06
84.08152	46562.4	4.70
86.09704	11337.7	1.14
98.09697	339763.0	34.27
98.10308	5561.6	0.56
112.11237	17464.5	1.76
113.10768	7518.0	0.76
114.09192	12412.7	1.25
114.12806	991318.3	100.00
126.12798	562301.9	56.72
130.06530	99574.8	10.04
131.11806	12597.6	1.27
143.15454	9950.6	1.00
153.13873	6070.9	0.61
171.18569	51003.3	5.15
183.18581	71600.2	7.22
215.11799	439337.3	44.32
216.20681	6896.1	0.70
228.24359	45951.8	4.64
261.26579	6673.2	0.67
270.16033	5341.2	0.54
288.17058	74263.8	7.49
305.19805	10650.5	1.07
318.32294	15991.9	1.61
329.23339	11633.1	1.17
345.22839	158614.5	16.00
362.25543	5905.0	0.60
414.32355	11889.1	1.20
430.31807	134986.4	13.62
475.37589	609679.8	61.50



NL: 6.61E6
 Aperta19#4225 RT:
 10.39 AV: 1 T: FTMS + p
 ESI Full lock ms
 [100.00-1500.00]

NL: 9.84E5
 Aperta19#4208-4239 RT:
 10.36-10.43 AV: 6 F:
 FTMS + p ESI d Full ms2
 475.34@hcd35.00
 [50.00-505.00]