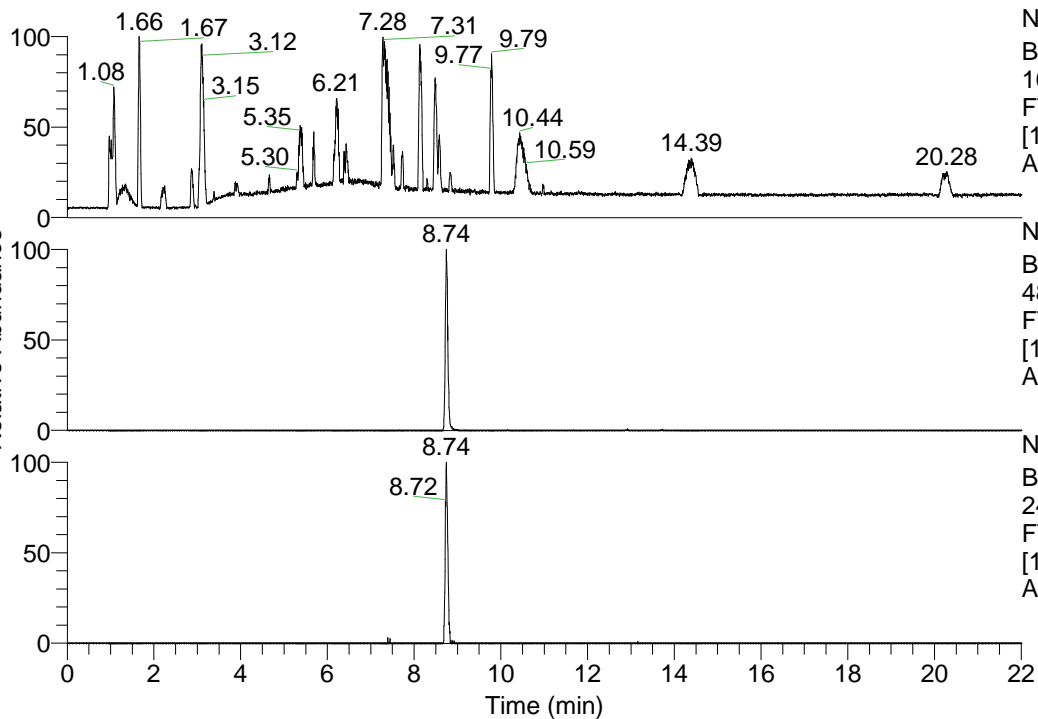


RT: 0.00 - 22.01



NL: 1.41E8
 Base Peak m/z=
 100.00000-1500.00000 F:
 FTMS + p ESI Full ms
 [100.00-1500.00] MS
 Aperta_HDX

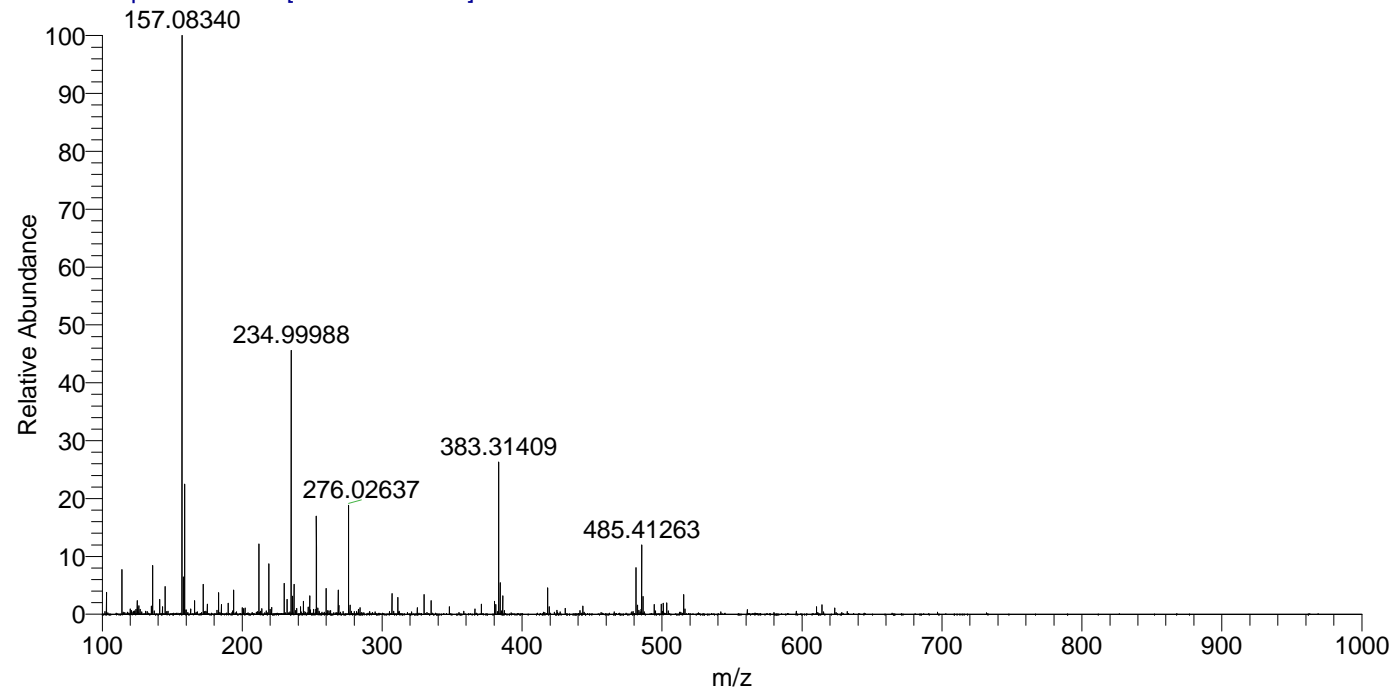
NL: 2.82E6
 Base Peak m/z=
 485.41124-485.41610 F:
 FTMS + p ESI Full ms
 [100.00-1500.00] MS
 Aperta_HDX

NL: 5.25E5
 Base Peak m/z=
 243.71266-243.71510 F:
 FTMS + p ESI Full ms
 [100.00-1500.00] MS
 Aperta_HDX

Aperta_HDX#1460 RT: 8.74
 T: FTMS + p ESI Full ms [100.00-1500.00]
 m/z= 485.00000-486.00000

m/z	Intensity	Relative	Delta (ppm)	Composition
485.41263	2821158.0	100.00	-1.01	C ₂₄ H ₃₃ ² H ₁₀ O ₂ N ₈
			-4.20	C ₂₄ H ₃₅ ² H ₉ O ₂ N ₈
			-7.39	C ₂₄ H ₃₇ ² H ₈ O ₂ N ₈

Aperta_HDX #1460 RT: 8.74 AV: 1 NL: 2.25E7
 T: FTMS + p ESI Full ms [100.00-1500.00]



Aperta_HDX #1460 RT: 8.74 AV: 1 NL: 2.69E6
 T: FTMS + p ESI Full ms [100.00-1500.00]

