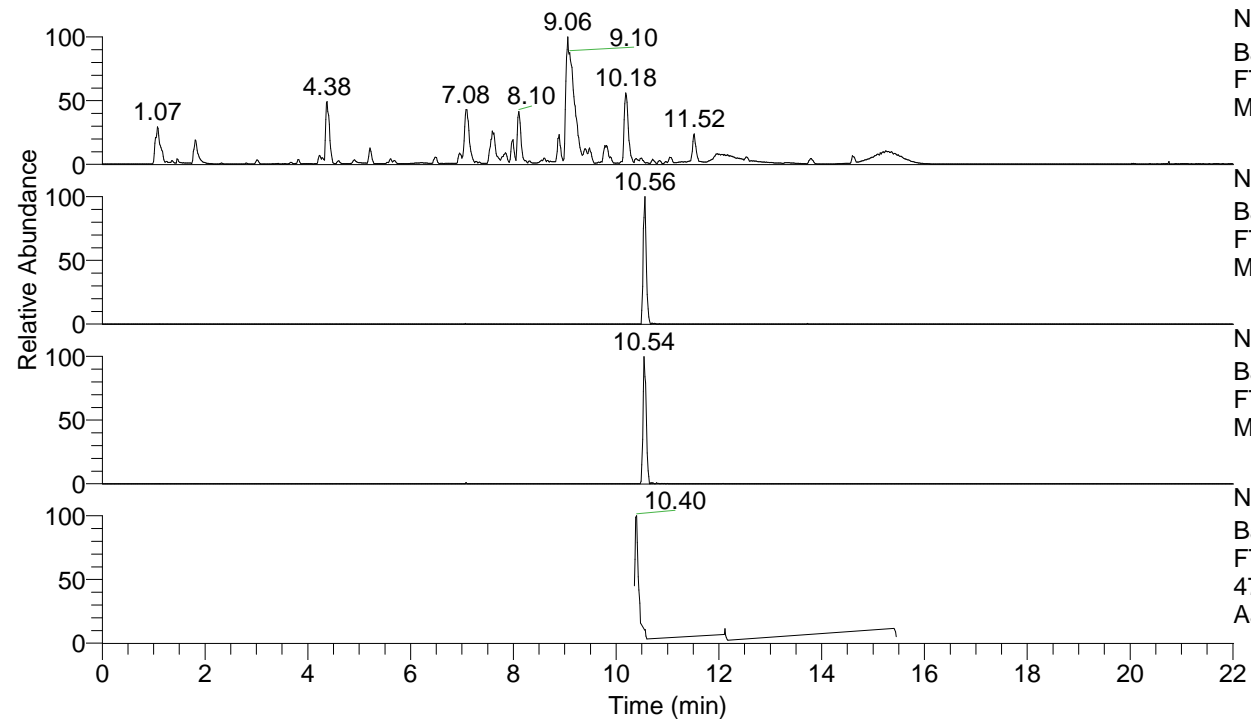


RT: 0.00 - 22.01



NL: 1.54E8
 Base Peak m/z= 100.00000-1500.00000 F:
 FTMS + p ESI Full ms [100.00-1500.00]
 MS Aperta19

NL: 1.39E6
 Base Peak m/z= 475.34852-475.35328 F:
 FTMS + p ESI Full ms [100.00-1500.00]
 MS Aperta19

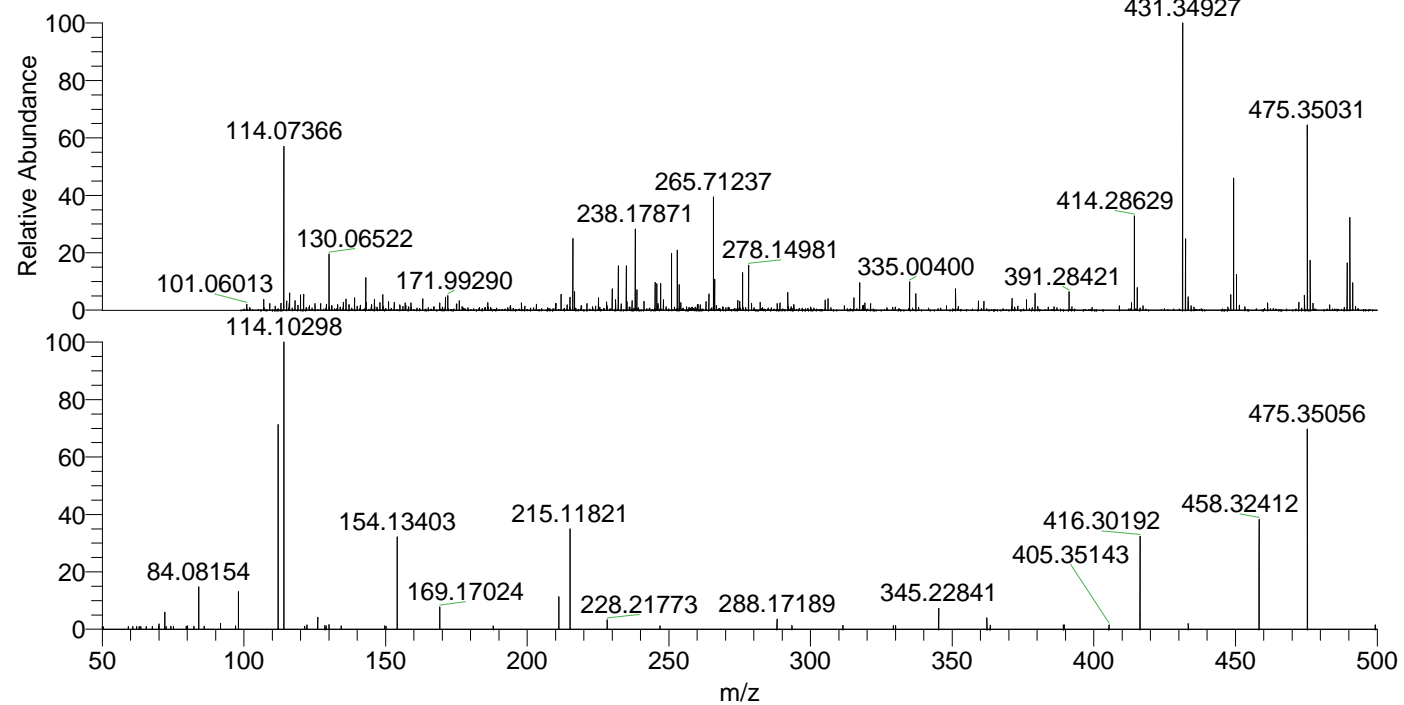
NL: 7.09E5
 Base Peak m/z= 238.17817-238.18055 F:
 FTMS + p ESI Full ms [100.00-1500.00]
 MS Aperta19

NL: 1.43E6
 Base Peak m/z= 50.00000-1500.00000 F:
 FTMS + p ESI d Full ms2
 475.34@hcd35.00 [50.00-505.00] MS
 Aperta19

Aperta19#4289-4299 RT: 10.55-10.58

F: FTMS + p ESI d Full ms2 475.34 ...
 m/z= 50.00000-1000.00000

m/z	Intensity	Relative
67.67806	1162.6	0.97
69.93902	1254.1	1.04
70.06595	2181.4	1.82
72.08167	6957.8	5.80
72.52286	1157.0	0.96
74.22207	1165.6	0.97
75.17870	1133.8	0.94
79.65163	1239.5	1.03
80.09183	1384.0	1.15
82.38437	1310.8	1.09
84.08154	17318.8	14.42
86.00738	1222.9	1.02
91.75195	2347.3	1.96
91.75744	1935.2	1.61
97.07661	1394.9	1.16
98.09707	15143.6	12.61
112.11242	82758.1	68.93
114.10298	120062.6	100.00
114.12816	11392.6	9.49
121.45359	1265.0	1.05
122.26997	1770.5	1.47
125.99390	1478.3	1.23
126.12822	4960.9	4.13
128.62889	1476.4	1.23
129.02161	1400.7	1.17
130.06530	1948.4	1.62
134.37519	1338.3	1.11
149.74816	1345.8	1.12
150.16073	1253.2	1.04
154.13403	37919.8	31.58
169.17024	9286.7	7.73
188.05161	1314.6	1.09
211.19192	13081.7	10.90
215.11821	40528.7	33.76
228.21773	3831.4	3.19
246.88201	1381.1	1.15
288.17189	4081.3	3.40
293.46100	1584.0	1.32
311.43294	1553.1	1.29
329.23104	1557.6	1.30
330.01472	1479.8	1.23
345.22841	8561.7	7.13
362.25352	4689.5	3.91
363.43594	1600.6	1.33
389.25979	1703.3	1.42
389.54532	1724.8	1.44
405.35143	1837.6	1.53
416.30192	37511.4	31.24
433.32542	2240.5	1.87
458.32412	44992.0	37.47
475.35056	84020.5	69.98
499.33139	1797.1	1.50



NL: 2.11E6
 Aperta19#4291 RT:
 10.56 AV: 1 T: FTMS + p
 ESI Full lock ms
 [100.00-1500.00]

NL: 1.16E5
 Aperta19#4282-4306 RT:
 10.55-10.58 AV: 3 F:
 FTMS + p ESI d Full ms2
 475.34@hcd35.00
 [50.00-505.00]