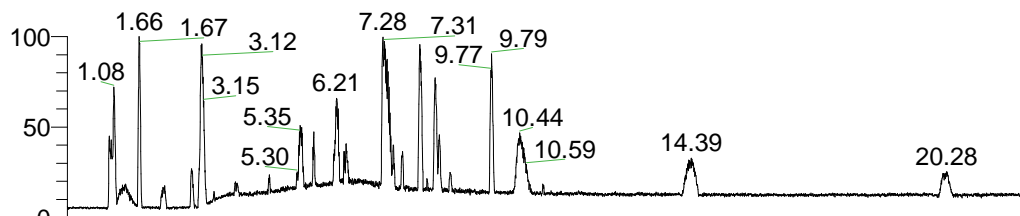


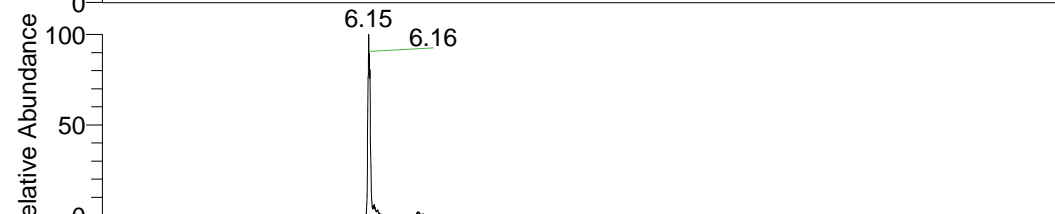
RT: 0.00 - 22.01



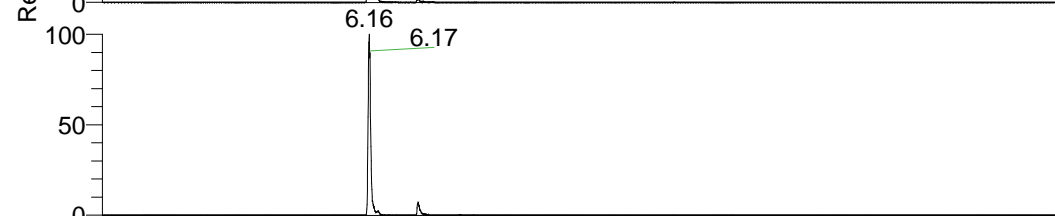
NL: 1.41E8
 Base Peak m/z=
 100.00000-1500.00000 F:
 FTMS + p ESI Full ms
 [100.00-1500.00] MS
 Aperta_HDX

Aperta_HDX#1010 RT: 6.15
 T: FTMS + p ESI Full ms [100.00-1500.00]
 m/z = 483.00000-484.00000

m/z	Intensity	Relative	Delta (ppm)	Composition
483.44727	10542812.0	100.00	-1.47	C ₂₆ H ₃₉ ² H ₉ ON ₇
			1.73	C ₂₆ H ₃₇ ² H ₁₀ ON ₇
			-4.67	C ₂₆ H ₄₁ ² H ₈ ON ₇
			-7.88	C ₂₆ H ₄₃ ² H ₇ ON ₇

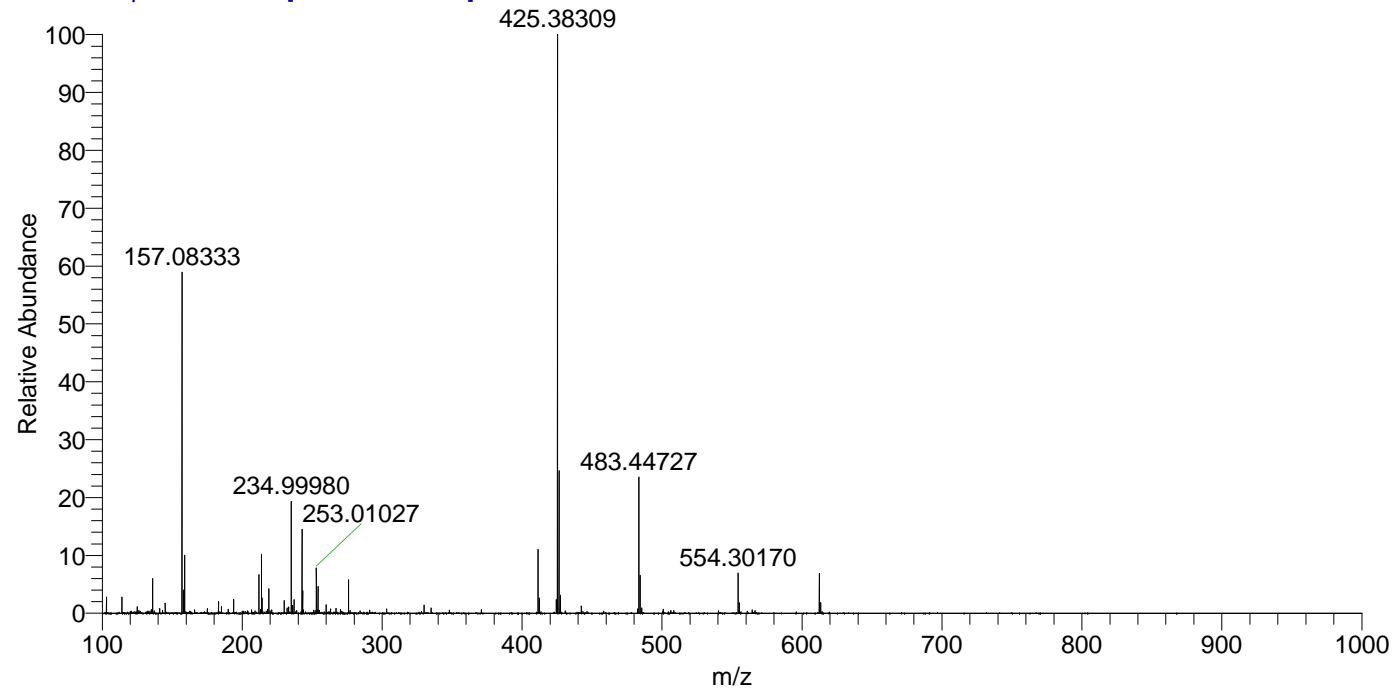


NL: 1.28E7
 Base Peak m/z=
 483.44611-483.45095 F:
 FTMS + p ESI Full ms
 [100.00-1500.00] MS
 Aperta_HDX



NL: 6.79E6
 Base Peak m/z=
 242.73010-242.73252 F:
 FTMS + p ESI Full ms
 [100.00-1500.00] MS
 Aperta_HDX

Aperta_HDX #1010 RT: 6.15 AV: 1 NL: 4.42E7
 T: FTMS + p ESI Full ms [100.00-1500.00]



Aperta_HDX #1010 RT: 6.15 AV: 1 NL: 1.04E7
 T: FTMS + p ESI Full ms [100.00-1500.00]

