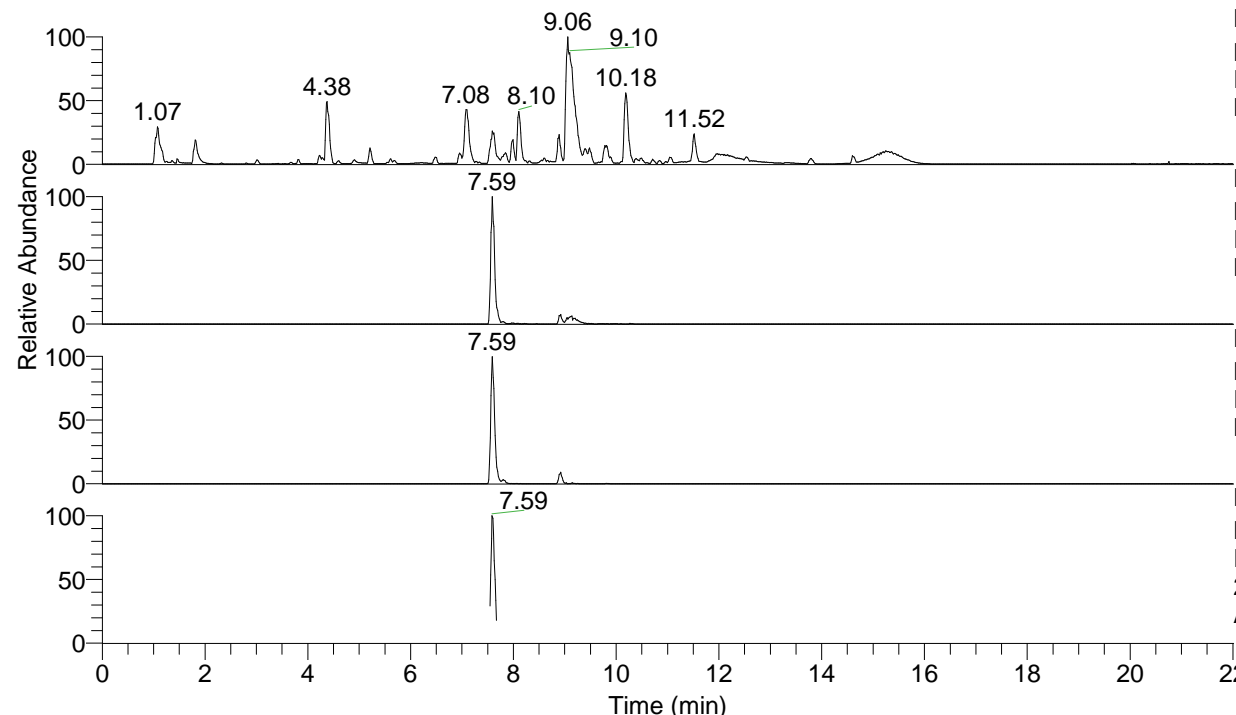


RT: 0.00 - 22.01



NL: 1.54E8
 Base Peak m/z= 100.00000-1500.00000 F:
 FTMS + p ESI Full ms [100.00-1500.00]
 MS Aperta19

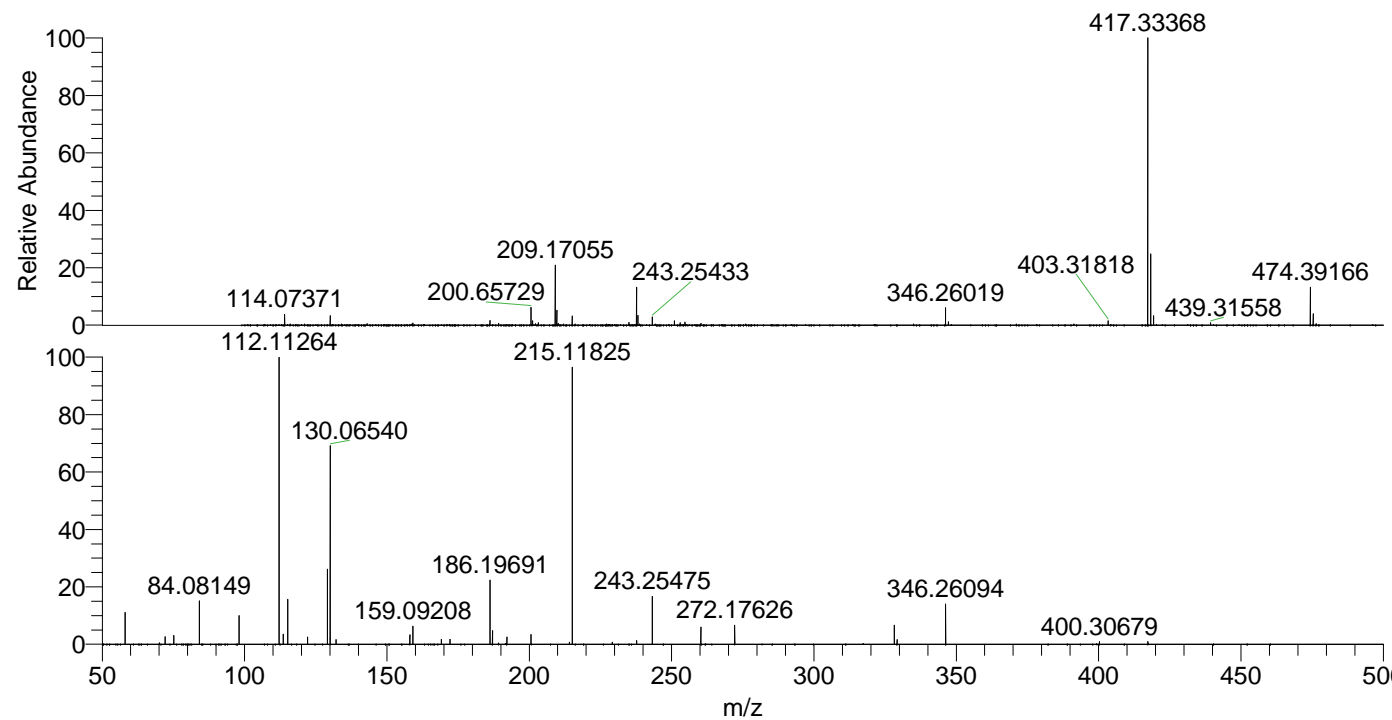
NL: 5.44E6
 Base Peak m/z= 474.38966-474.39440 F:
 FTMS + p ESI Full ms [100.00-1500.00]
 MS Aperta19

NL: 5.15E6
 Base Peak m/z= 237.69874-237.70112 F:
 FTMS + p ESI Full ms [100.00-1500.00]
 MS Aperta19

NL: 6.52E5
 Base Peak m/z= 50.00000-1500.00000 F:
 FTMS + p ESI d Full ms2
 237.70@hcd35.00 [50.00-505.00] MS
 Aperta19

Aperta19#3048-3094 RT: 7.55-7.66 AV:
 F: FTMS + p ESI d Full ms2 237.70 ...
 m/z= 50.00000-1000.00000

m/z	Intensity	Relative
58.06605	44512.8	11.07
70.06602	2040.3	0.51
72.08167	10655.6	2.65
75.09249	12235.0	3.04
84.08149	59802.3	14.87
98.09710	41062.5	10.21
112.11264	402089.4	100.00
113.61815	13902.6	3.46
115.12349	63437.0	15.78
122.13134	9865.7	2.45
129.13893	104734.2	26.05
130.06540	275276.3	68.46
132.15003	6574.7	1.64
158.06039	12944.6	3.22
159.09208	25351.3	6.30
169.17057	6923.3	1.72
172.18152	7096.7	1.76
186.19691	88998.7	22.13
187.08729	18851.0	4.69
192.14458	9908.8	2.46
200.65768	13480.3	3.35
214.13423	3093.5	0.77
215.11825	395025.0	98.24
229.18683	2716.6	0.68
237.70004	5003.6	1.24
243.25475	65812.9	16.37
260.28162	23376.8	5.81
272.17626	26869.4	6.68
328.25023	26456.0	6.58
329.23394	6574.9	1.64
346.26094	55564.7	13.82
400.30679	3661.2	0.91
417.33362	3626.9	0.90



NL: 3.88E7
 Aperta19#3067 RT: 7.59
 AV: 1 T: FTMS + p ESI
 Full lock ms
 [100.00-1500.00]

NL: 3.95E5
 Aperta19#3045-3097
 RT: 7.55-7.66 AV: 9 F:
 FTMS + p ESI d Full ms2
 237.70@hcd35.00
 [50.00-505.00]