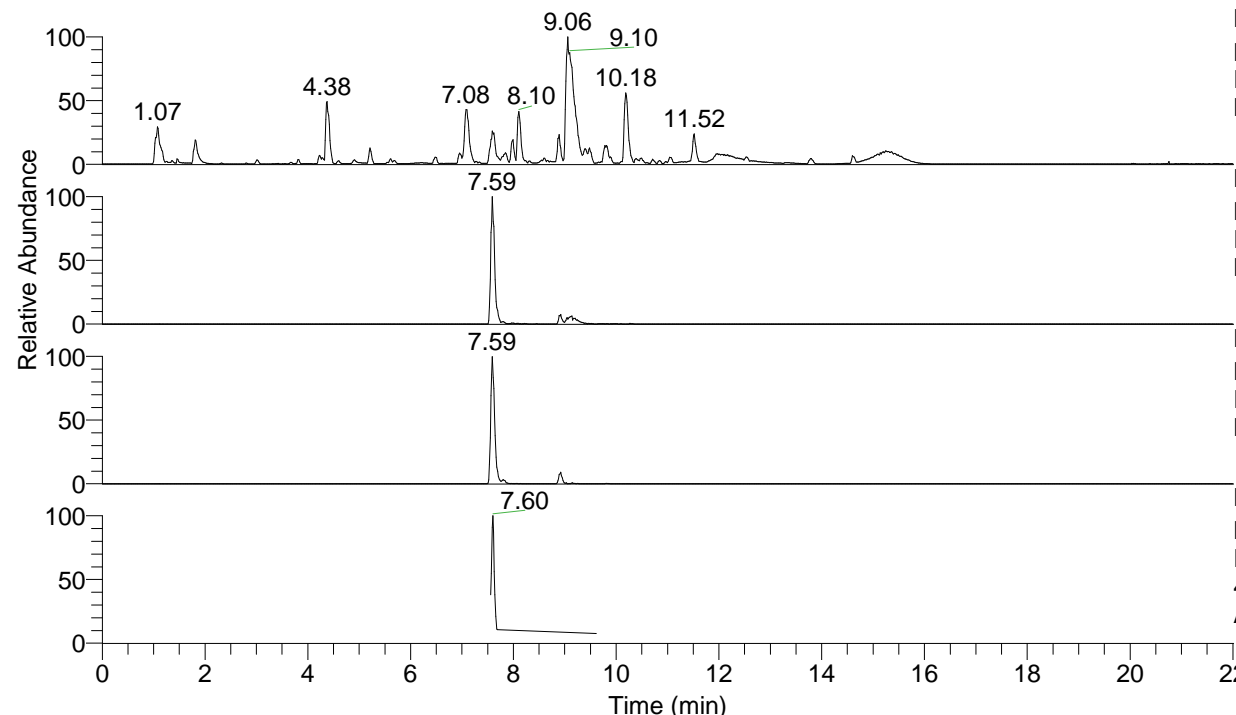


RT: 0.00 - 22.01



NL: 1.54E8
 Base Peak m/z= 100.00000-1500.00000 F:
 FTMS + p ESI Full ms [100.00-1500.00]
 MS Aperta19

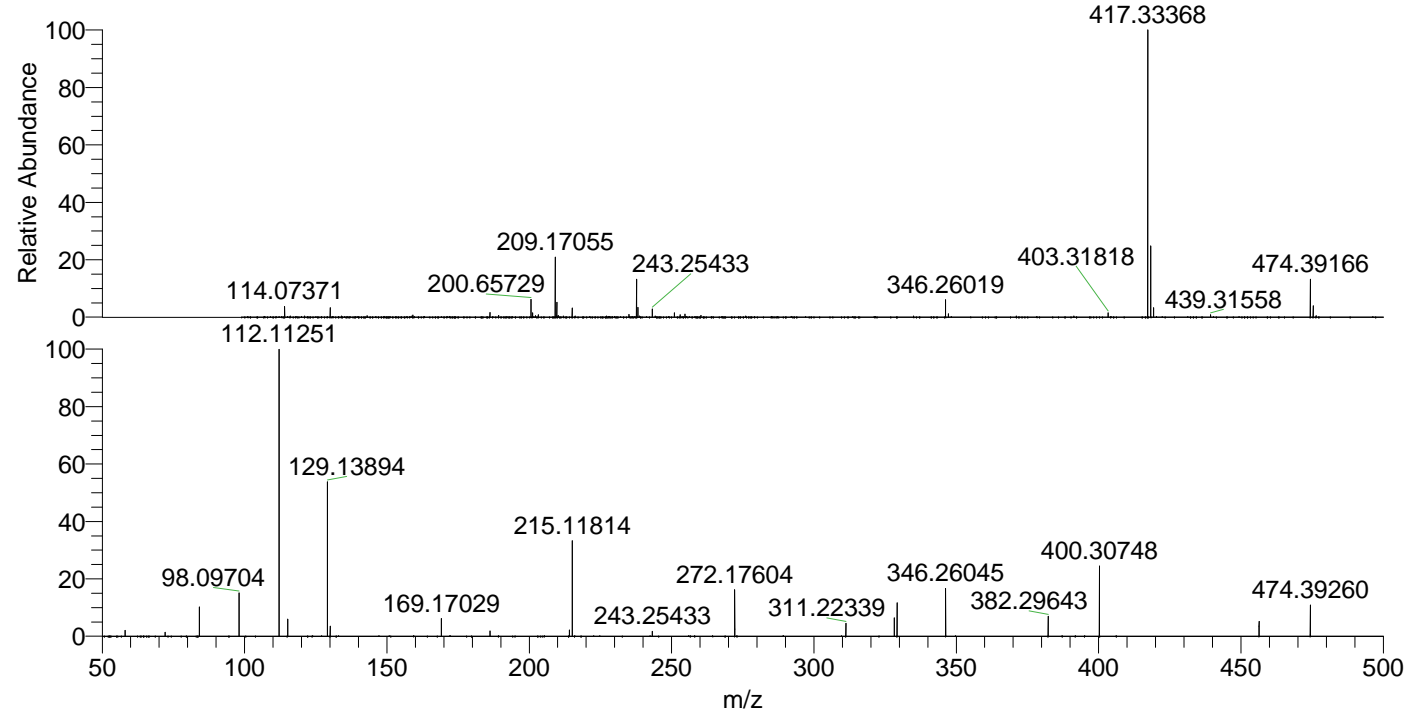
NL: 5.44E6
 Base Peak m/z= 474.38966-474.39440 F:
 FTMS + p ESI Full ms [100.00-1500.00]
 MS Aperta19

NL: 5.15E6
 Base Peak m/z= 237.69874-237.70112 F:
 FTMS + p ESI Full ms [100.00-1500.00]
 MS Aperta19

NL: 8.89E5
 Base Peak m/z= 50.00000-1500.00000 F:
 FTMS + p ESI d Full ms2
 474.35@hcd35.00 [50.00-500.00] MS
 Aperta19

Aperta19#3052-3095 RT: 7.56-7.66 AV:
 F: FTMS + p ESI d Full ms2 474.35 ...
 m/z= 50.00000-1000.00000

m/z	Intensity	Relative
58.06604	10748.5	2.11
72.08156	7163.4	1.40
84.08154	52424.6	10.28
98.09704	76375.5	14.98
112.11251	509906.8	100.00
115.12341	30494.7	5.98
129.13894	273163.1	53.57
130.06563	17558.5	3.44
169.17029	32245.3	6.32
186.19734	9360.7	1.84
214.13462	11051.9	2.17
215.11814	168443.5	33.03
243.25433	9285.9	1.82
272.17604	82598.5	16.20
311.22339	22985.4	4.51
328.25010	33246.9	6.52
329.23404	60244.6	11.81
346.26045	86647.6	16.99
382.29643	36149.5	7.09
400.30748	123951.3	24.31
456.38091	27008.1	5.30
474.39260	54969.6	10.78



NL: 3.88E7
 Aperta19#3067 RT: 7.59
 AV: 1 T: FTMS + p ESI
 Full lock ms
 [100.00-1500.00]

NL: 5.07E5
 Aperta19#3049-3095
 RT: 7.56-7.66 AV: 8 F:
 FTMS + p ESI d Full ms2
 474.35@hcd35.00
 [50.00-500.00]