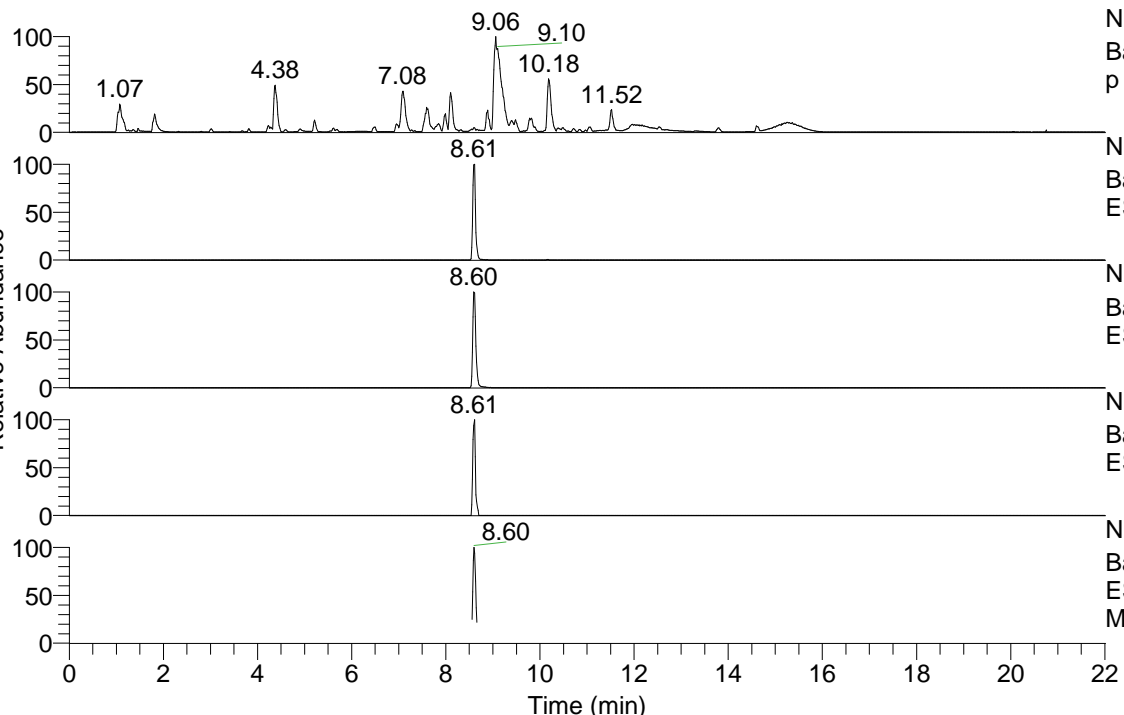


RT: 0.00 - 22.01



NL: 1.54E8  
 Base Peak m/z= 100.00000-1500.00000 F: FTMS + p ESI Full ms [100.00-1500.00] MS Aperta19

NL: 6.14E6  
 Base Peak m/z= 473.39442-473.39916 F: FTMS + p ESI Full ms [100.00-1500.00] MS Aperta19

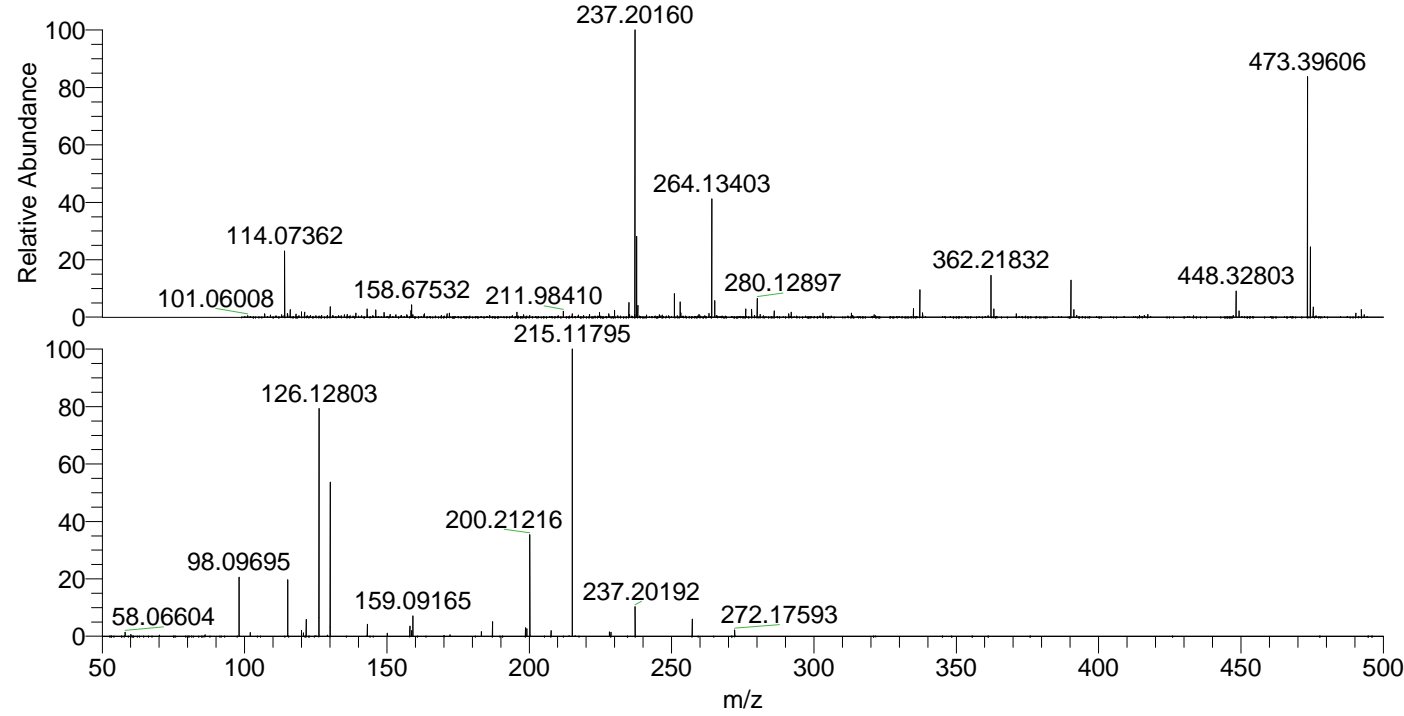
NL: 7.41E6  
 Base Peak m/z= 237.20112-237.20350 F: FTMS + p ESI Full ms [100.00-1500.00] MS Aperta19

NL: 1.03E5  
 Base Peak m/z= 587.38671-587.39259 F: FTMS + p ESI Full ms [100.00-1500.00] MS Aperta19

NL: 1.35E6  
 Base Peak m/z= 50.00000-1500.00000 F: FTMS + p ESI d Full ms2 237.20@hcd35.00 [50.00-500.00] MS Aperta19

Aperta19#3461-3500 RT: 8.56-8.66 AV: F: FTMS + p ESI d Full ms2 237.20 ... m/z= 50.00000-1000.00000

m/z	Intensity	Relative
58.06604	10616.4	1.38
60.08159	4931.3	0.64
98.09695	157943.5	20.52
102.02056	10540.3	1.37
115.12331	150819.6	19.60
120.03099	17817.3	2.32
120.62563	8345.0	1.08
121.63350	44106.5	5.73
126.12804	617332.3	80.21
130.06533	414468.6	53.85
143.15458	33070.6	4.30
150.16233	9054.9	1.18
158.06026	26833.1	3.49
158.67550	14869.9	1.93
159.09166	53783.8	6.99
172.18114	4061.7	0.53
183.18583	12411.6	1.61
187.08655	39292.4	5.11
198.65999	24013.7	3.12
199.15231	19286.5	2.51
200.21217	276644.6	35.95
207.66517	15093.1	1.96
215.11795	769617.3	100.00
228.19665	10938.3	1.42
228.68853	10810.6	1.40
237.20190	80401.6	10.45
257.26992	45530.8	5.92
272.17593	16012.6	2.08



NL: 7.28E6  
 Aperta19#3481 RT: 8.61 AV: 1 T: FTMS + p ESI Full lock ms [100.00-1500.00]

NL: 8.40E5  
 Aperta19#3460-3497 RT: 8.56-8.65 AV: 7 F: FTMS + p ESI d Full ms2 237.20@hcd35.00 [50.00-500.00]