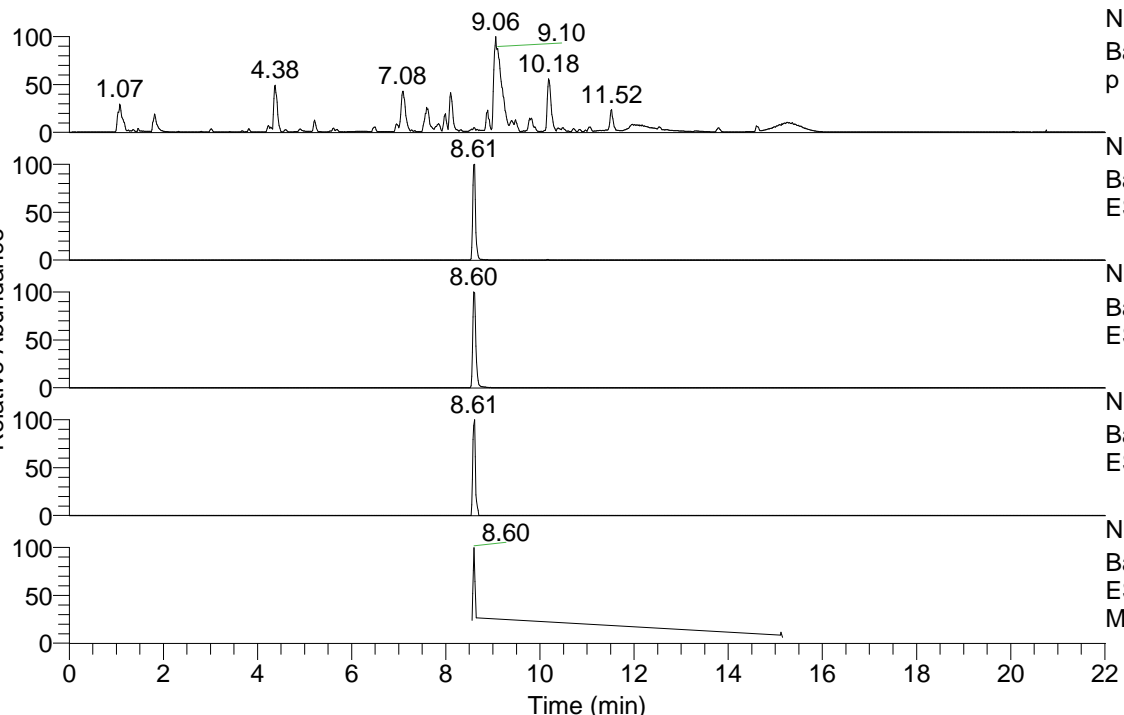


RT: 0.00 - 22.01



NL: 1.54E8
 Base Peak m/z= 100.00000-1500.00000 F: FTMS + p ESI Full ms [100.00-1500.00] MS Aperta19

NL: 6.14E6
 Base Peak m/z= 473.39442-473.39916 F: FTMS + p ESI Full ms [100.00-1500.00] MS Aperta19

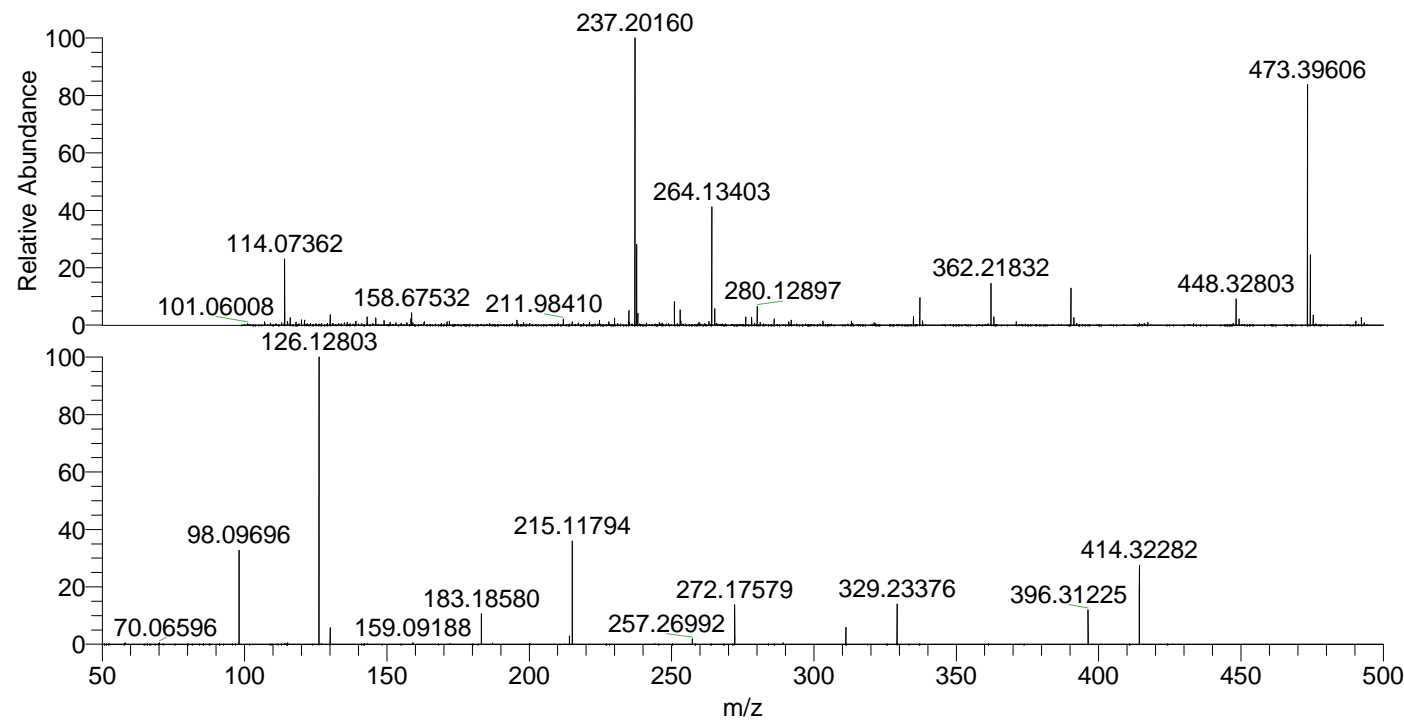
NL: 7.41E6
 Base Peak m/z= 237.20112-237.20350 F: FTMS + p ESI Full ms [100.00-1500.00] MS Aperta19

NL: 1.03E5
 Base Peak m/z= 587.38671-587.39259 F: FTMS + p ESI Full ms [100.00-1500.00] MS Aperta19

NL: 1.91E6
 Base Peak m/z= 50.00000-1500.00000 F: FTMS + p ESI d Full ms2 473.32@hcd35.00 [50.00-500.00] MS Aperta19

Aperta19#3462-3495 RT: 8.56-8.65 AV: F: FTMS + p ESI d Full ms2 473.32 ... m/z= 50.00000-1000.00000

m/z	Intensity	Relative
70.06596	5252.2	0.53
98.09696	318029.2	32.11
115.12353	5049.4	0.51
126.12803	990521.4	100.00
130.06528	56100.0	5.66
159.09188	5432.0	0.55
183.18580	104158.4	10.52
214.13366	27259.5	2.75
215.11794	349472.5	35.28
257.26992	18342.5	1.85
272.17579	133692.8	13.50
311.22297	56944.8	5.75
329.23376	138223.2	13.95
396.31225	116882.2	11.80
414.32282	277386.2	28.00



NL: 7.28E6
 Aperta19#3481 RT: 8.61 AV: 1 T: FTMS + p ESI Full lock ms [100.00-1500.00]

NL: 9.71E5
 Aperta19#3457-3496 RT: 8.56-8.65 AV: 7 F: FTMS + p ESI d Full ms2 473.32@hcd35.00 [50.00-500.00]