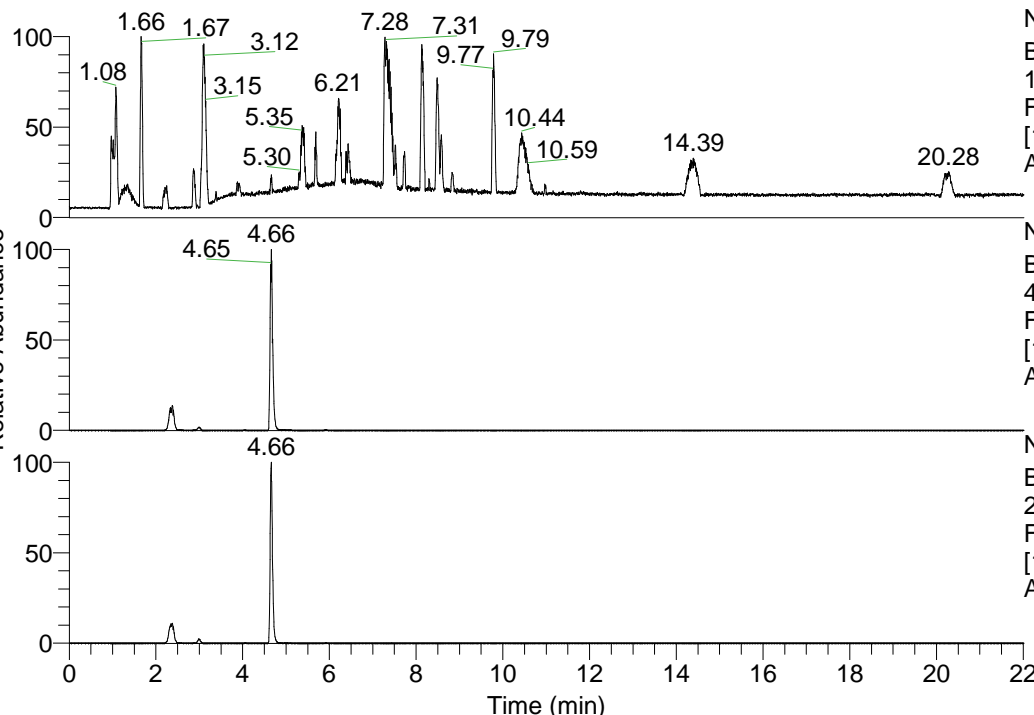


RT: 0.00 - 22.01



NL: 1.41E8  
 Base Peak m/z=  
 100.00000-1500.00000 F:  
 FTMS + p ESI Full ms  
 [100.00-1500.00] MS  
 Aperta\_HDX

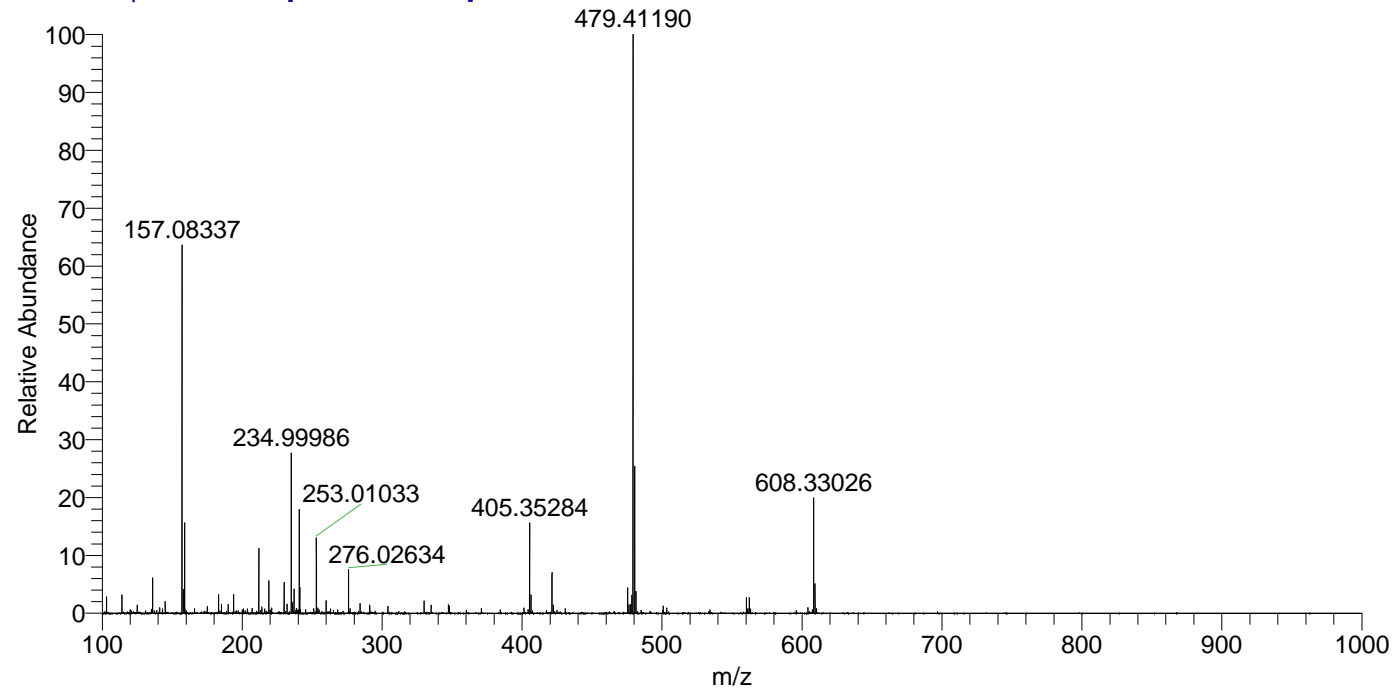
Aperta\_HDX#758 RT: 4.66  
 T: FTMS + p ESI Full ms [100.00-1500.00]  
 m/z= 479.00000-480.00000

m/z	Intensity	Relative	Delta (ppm)	Composition
479.41190	33141638.0	100.00	-1.15	C <sub>23</sub> H <sub>35</sub> <sup>2</sup> H <sub>10</sub> O <sub>4</sub> N <sub>6</sub>
			-4.38	C <sub>23</sub> H <sub>37</sub> <sup>2</sup> H <sub>9</sub> O <sub>4</sub> N <sub>6</sub>
			-7.61	C <sub>23</sub> H <sub>39</sub> <sup>2</sup> H <sub>8</sub> O <sub>4</sub> N <sub>6</sub>

NL: 3.31E7  
 Base Peak m/z=  
 479.41060-479.41540 F:  
 FTMS + p ESI Full ms  
 [100.00-1500.00] MS  
 Aperta\_HDX

NL: 5.96E6  
 Base Peak m/z=  
 240.71235-240.71475 F:  
 FTMS + p ESI Full ms  
 [100.00-1500.00] MS  
 Aperta\_HDX

Aperta\_HDX #758 RT: 4.66 AV: 1 NL: 3.20E7  
 T: FTMS + p ESI Full ms [100.00-1500.00]



Aperta\_HDX #758 RT: 4.66 AV: 1 NL: 3.20E7  
 T: FTMS + p ESI Full ms [100.00-1500.00]

