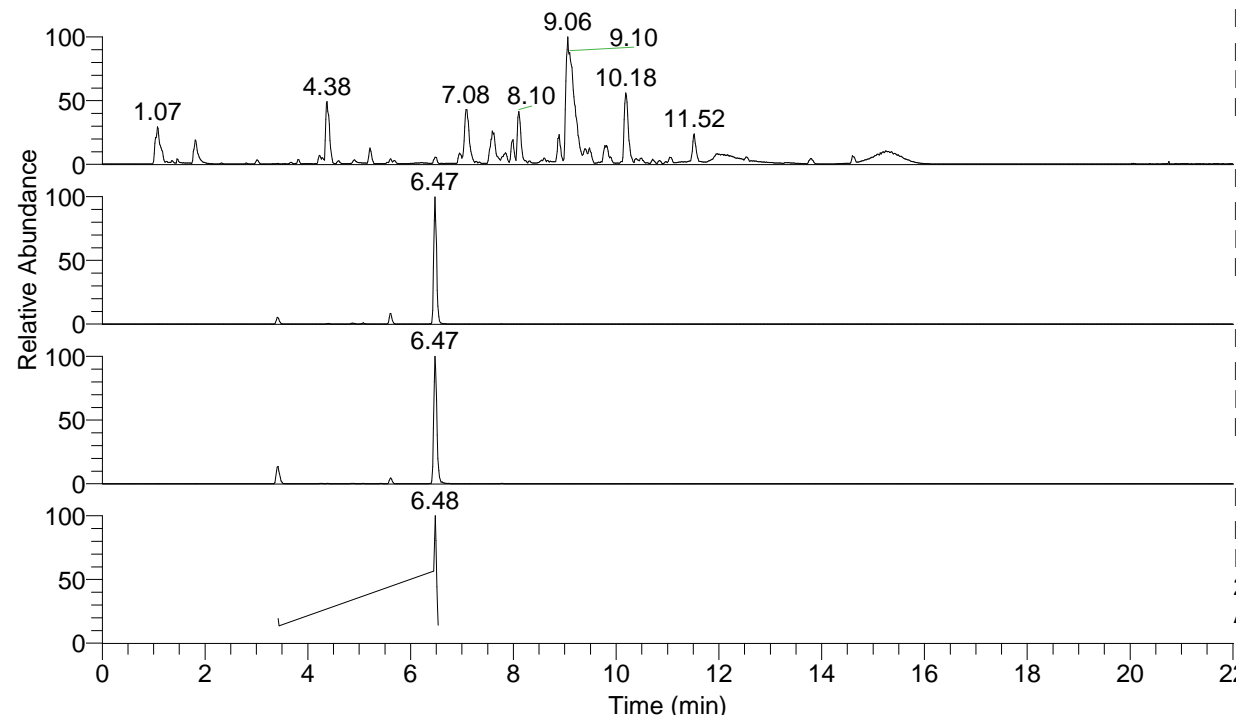


RT: 0.00 - 22.01



NL: 1.54E8  
 Base Peak m/z= 100.00000-1500.00000 F:  
 FTMS + p ESI Full ms [100.00-1500.00]  
 MS Aperta19

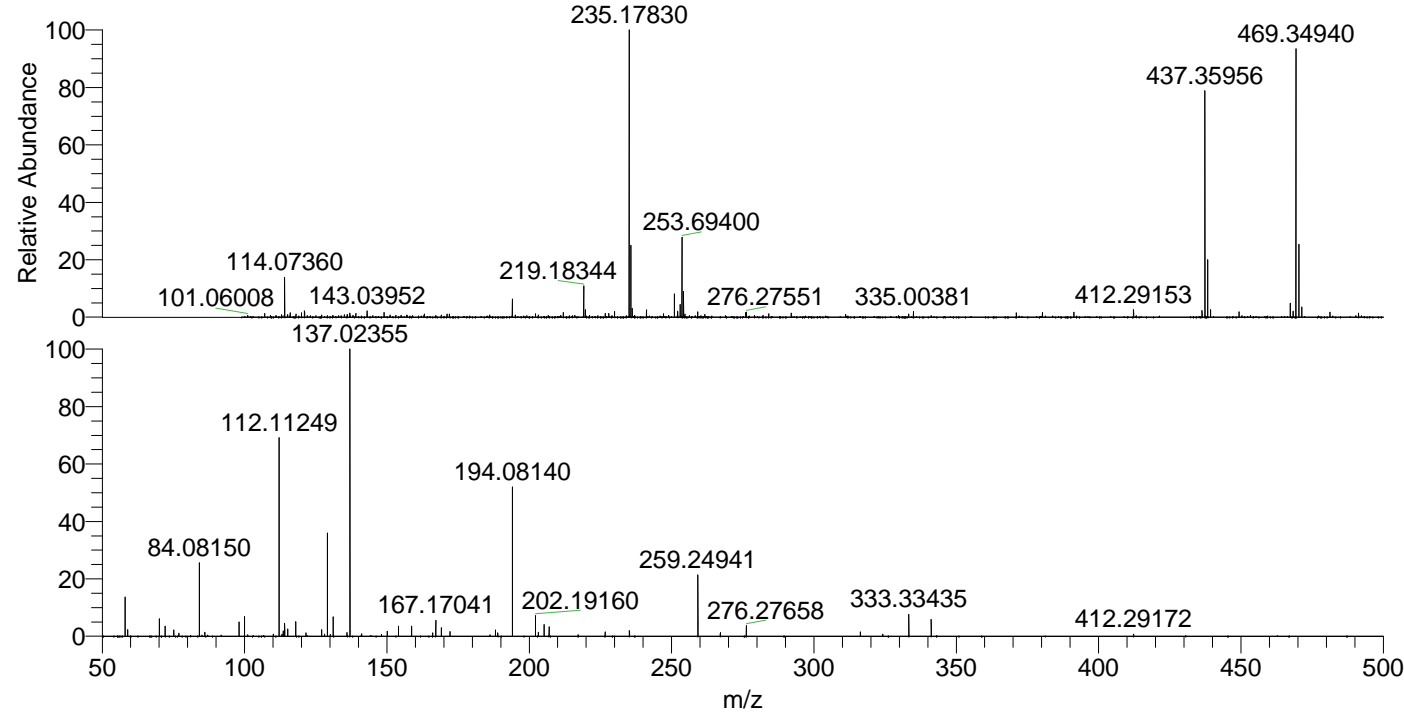
NL: 8.25E6  
 Base Peak m/z= 469.34788-469.35258 F:  
 FTMS + p ESI Full ms [100.00-1500.00]  
 MS Aperta19

NL: 8.63E6  
 Base Peak m/z= 235.17785-235.18021 F:  
 FTMS + p ESI Full ms [100.00-1500.00]  
 MS Aperta19

NL: 1.30E6  
 Base Peak m/z= 50.00000-1500.00000 F:  
 FTMS + p ESI d Full ms2  
 235.18@hcd35.00 [50.00-500.00] MS  
 Aperta19

Aperta19#2602-2631 RT: 6.45-6.52 AV:  
 F: FTMS + p ESI d Full ms2 235.18 ...  
 m/z= 50.00000-1000.00000

m/z	Intensity	Relative
58.06603	107373.8	13.54
58.96135	18376.9	2.32
70.06596	47718.4	6.02
72.08160	28388.3	3.58
75.09249	17684.7	2.23
76.97183	8418.2	1.06
84.08150	202483.1	25.54
86.06075	11217.0	1.41
98.09704	39751.5	5.01
99.98756	53799.7	6.79
101.10785	3977.0	0.50
110.09689	5376.5	0.68
112.11249	555368.6	70.06
113.10765	5792.5	0.73
113.61805	14106.6	1.78
114.09171	35923.0	4.53
115.12321	20052.8	2.53
117.99793	41457.4	5.23
121.61534	9543.9	1.20
127.12325	17580.6	2.22
128.10720	5629.6	0.71
129.13884	283392.2	35.75
130.12840	5271.7	0.66
131.11809	54253.3	6.84
136.00855	10243.3	1.29
137.02355	792758.4	100.00
141.13899	6412.5	0.81
148.14457	5119.8	0.65
150.14429	14050.8	1.77
154.05019	27810.4	3.51
158.65735	28368.9	3.58
166.05018	8951.9	1.13
167.17041	43704.2	5.51
169.17030	23536.3	2.97
172.18093	12796.6	1.61
186.19700	4374.6	0.55
188.17632	17931.4	2.26
188.96845	9137.0	1.15
194.08140	423990.5	53.48
202.19160	58270.3	7.35
203.22329	11469.6	1.45
205.20261	33058.1	4.17
206.97905	26161.2	3.30
226.66511	11868.7	1.50
235.17613	15267.3	1.93
235.20615	10660.8	1.34
259.24941	168112.0	21.21
267.13442	10463.4	1.32
276.27658	29213.8	3.69
316.30780	12443.4	1.57
324.19259	6134.7	0.77
333.33435	60823.2	7.67
341.21860	46923.8	5.92
412.29172	5619.7	0.71



NL: 8.31E6  
 Aperta19#2611 RT: 6.47  
 AV: 1 T: FTMS + p ESI  
 Full lock ms  
 [100.00-1500.00]

NL: 7.87E5  
 Aperta19#2599-2632  
 RT: 6.45-6.52 AV: 6 F:  
 FTMS + p ESI d Full ms2  
 235.18@hcd35.00  
 [50.00-500.00]