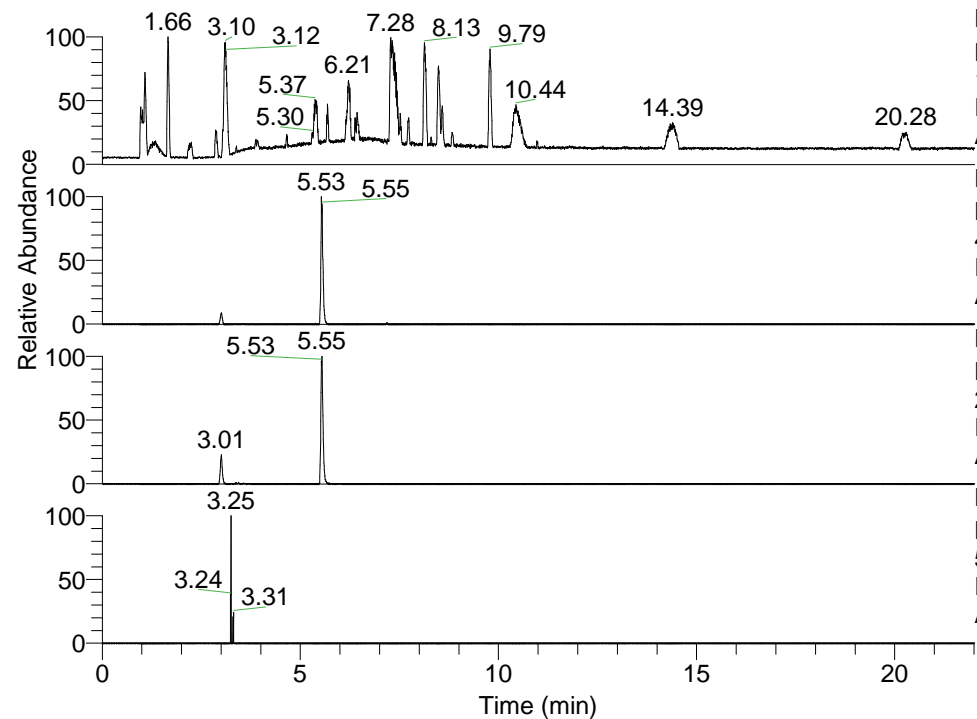


RT: 0.00 - 22.01



NL: 1.41E8
 Base Peak m/z=
 100.00000-1500.00000 F: FTMS + p
 ESI Full ms [100.00-1500.00] MS
 Aperta_HDX

NL: 3.15E6
 Base Peak m/z=
 474.39027-474.39501 F: FTMS + p
 ESI Full ms [100.00-1500.00] MS
 Aperta_HDX

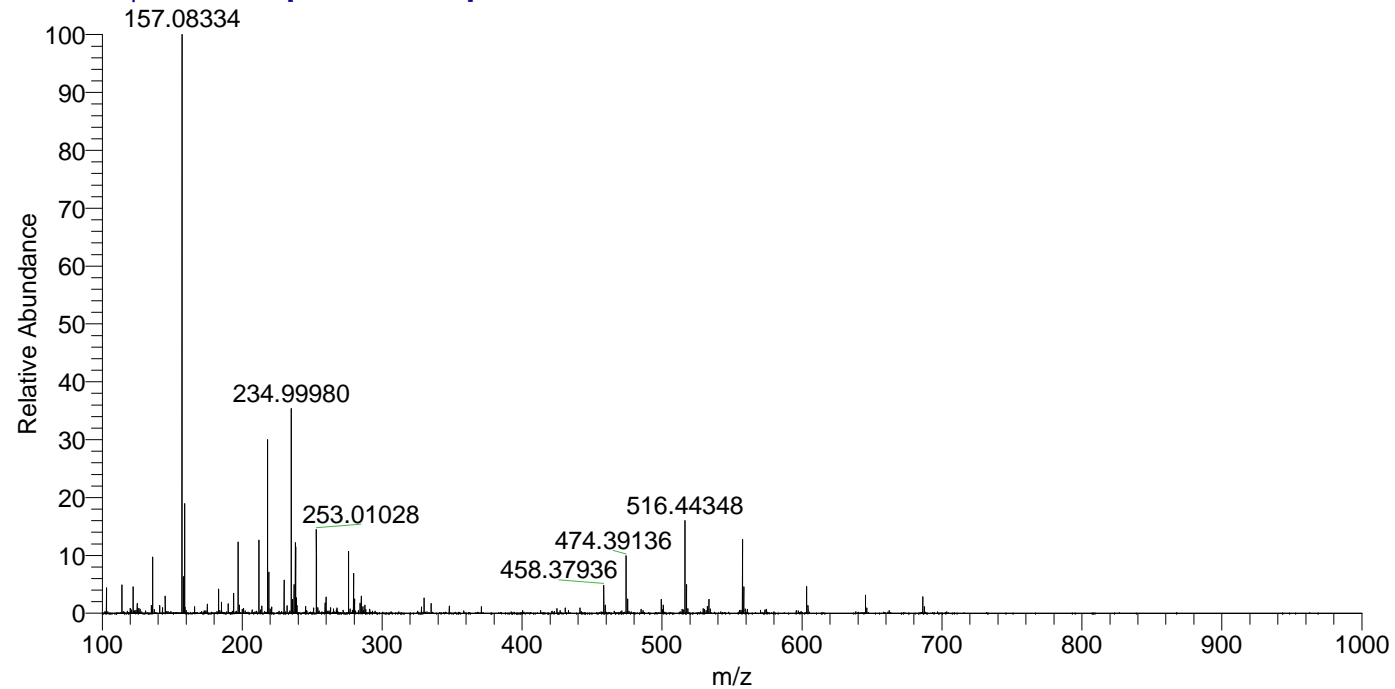
NL: 3.31E6
 Base Peak m/z=
 238.20218-238.20456 F: FTMS + p
 ESI Full ms [100.00-1500.00] MS
 Aperta_HDX

NL: 1.39E4
 Base Peak m/z=
 589.38883-589.39473 F: FTMS + p
 ESI Full ms [100.00-1500.00] MS
 Aperta_HDX

Aperta_HDX#905 RT: 5.53
 T: FTMS + p ESI Full ms [100.00-1500.00]
 m/z= 474.00000-475.00000

m/z	Intensity	Relative	Delta (ppm)	Composition
474.39136	2571052.8	100.00	-1.55	C ₂₄ H ₄₀ ² H ₆ O ₄ N ₅
			1.72	C ₂₄ H ₃₈ ² H ₇ O ₄ N ₅
			-4.81	C ₂₄ H ₄₂ ² H ₅ O ₄ N ₅
			4.98	C ₂₄ H ₃₆ ² H ₈ O ₄ N ₅
			-8.08	C ₂₄ H ₄₄ ² H ₄ O ₄ N ₅
			8.24	C ₂₄ H ₃₄ ² H ₉ O ₄ N ₅

Aperta_HDX #905 RT: 5.53 AV: 1 NL: 2.57E7
 T: FTMS + p ESI Full ms [100.00-1500.00]



Aperta_HDX #905 RT: 5.53 AV: 1 NL: 2.55E6
 T: FTMS + p ESI Full ms [100.00-1500.00]

