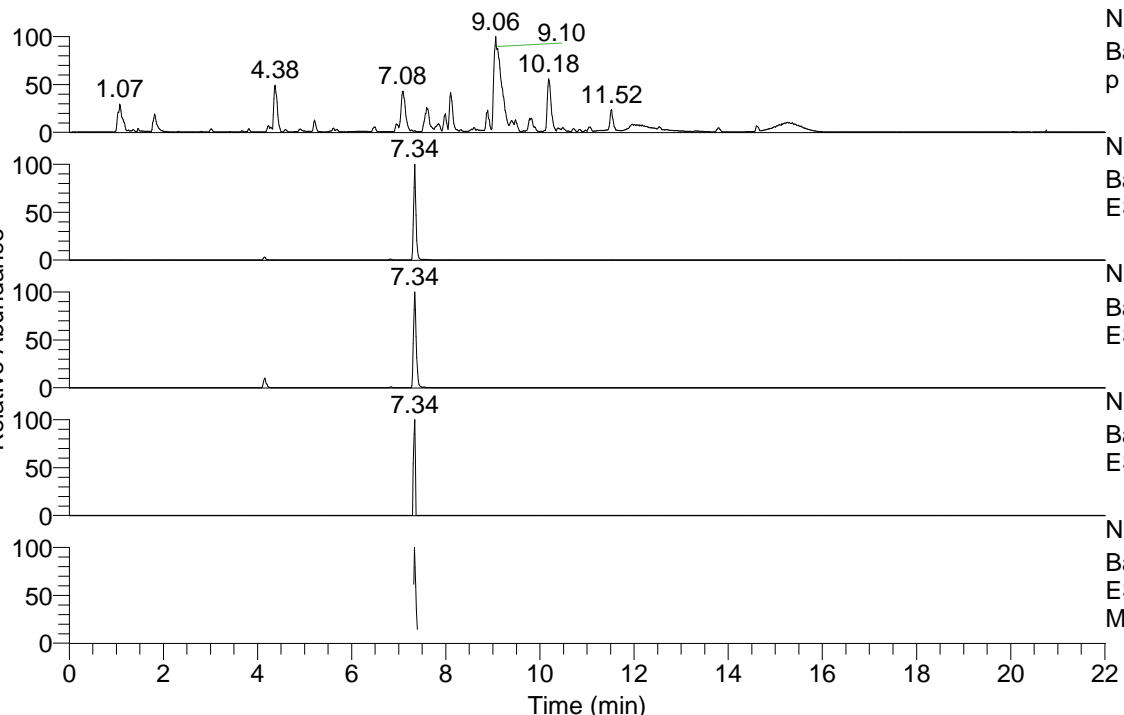


RT: 0.00 - 22.01



NL: 1.54E8
 Base Peak m/z= 100.00000-1500.00000 F: FTMS + p ESI Full ms [100.00-1500.00] MS Aperta19

NL: 2.33E6
 Base Peak m/z= 468.35264-468.35732 F: FTMS + p ESI Full ms [100.00-1500.00] MS Aperta19

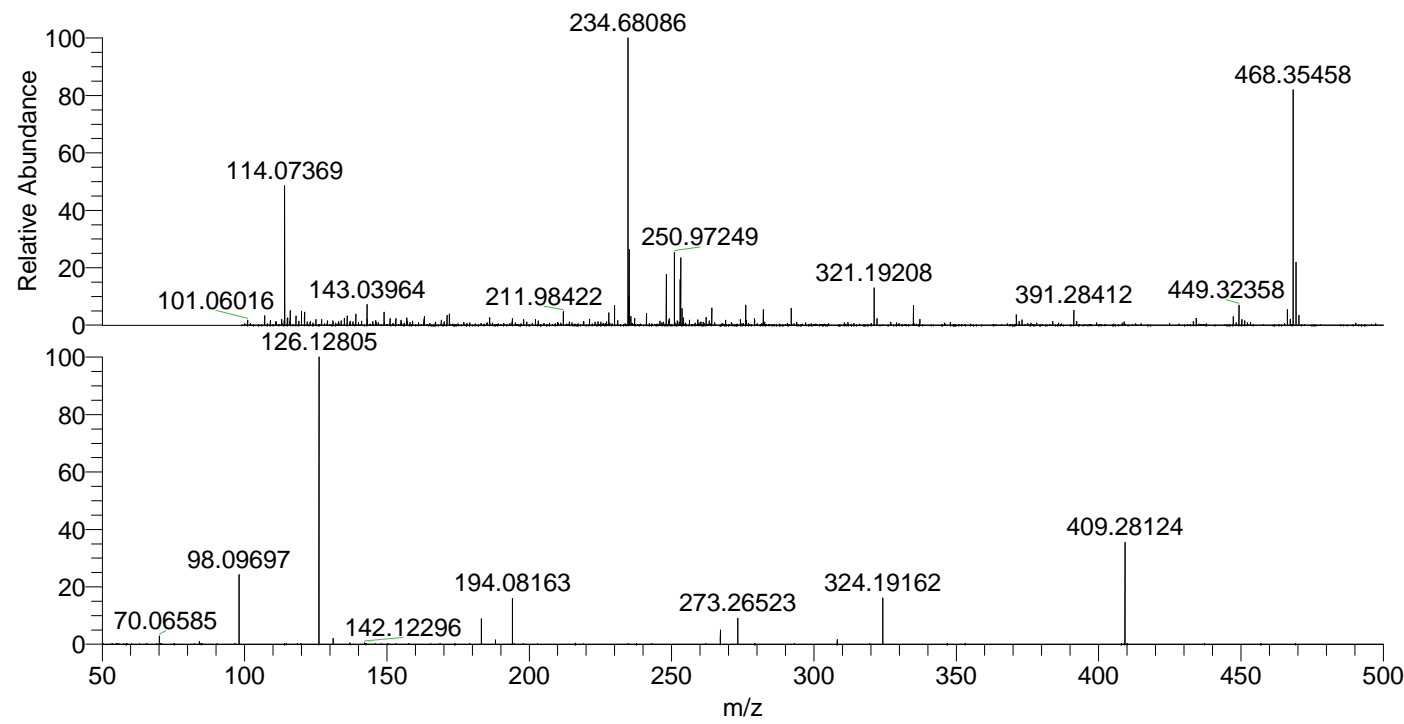
NL: 2.86E6
 Base Peak m/z= 234.68023-234.68257 F: FTMS + p ESI Full ms [100.00-1500.00] MS Aperta19

NL: 2.94E3
 Base Peak m/z= 582.34493-582.35075 F: FTMS + p ESI Full ms [100.00-1500.00] MS Aperta19

NL: 5.71E5
 Base Peak m/z= 50.00000-1500.00000 F: FTMS + p ESI d Full ms2 468.35@hcd35.00 [50.00-495.00] MS Aperta19

Aperta19#2957-2979 RT: 7.32-7.38 AV: F: FTMS + p ESI d Full ms2 468.35 ... m/z= 50.00000-1000.00000

| m/z | Intensity | Relative |
|-----------|-----------|----------|
| 70.06585 | 10362.4 | 2.90 |
| 84.08137 | 3272.7 | 0.92 |
| 98.09697 | 88107.3 | 24.68 |
| 126.12805 | 356936.7 | 100.00 |
| 131.11835 | 7421.4 | 2.08 |
| 137.02398 | 1853.6 | 0.52 |
| 142.12296 | 1984.4 | 0.56 |
| 183.18585 | 31732.6 | 8.89 |
| 188.17569 | 5253.6 | 1.47 |
| 194.08163 | 58192.6 | 16.30 |
| 267.13467 | 17746.2 | 4.97 |
| 273.26523 | 32736.5 | 9.17 |
| 308.19746 | 5637.8 | 1.58 |
| 324.19162 | 57532.5 | 16.12 |
| 409.28124 | 127350.7 | 35.68 |



NL: 2.80E6
 Aperta19#2965 RT: 7.34 AV: 1 T: FTMS + p ESI Full lock ms [100.00-1500.00]

NL: 3.57E5
 Aperta19#2950-2986 RT: 7.32-7.38 AV: 5 F: FTMS + p ESI d Full ms2 468.35@hcd35.00 [50.00-495.00]