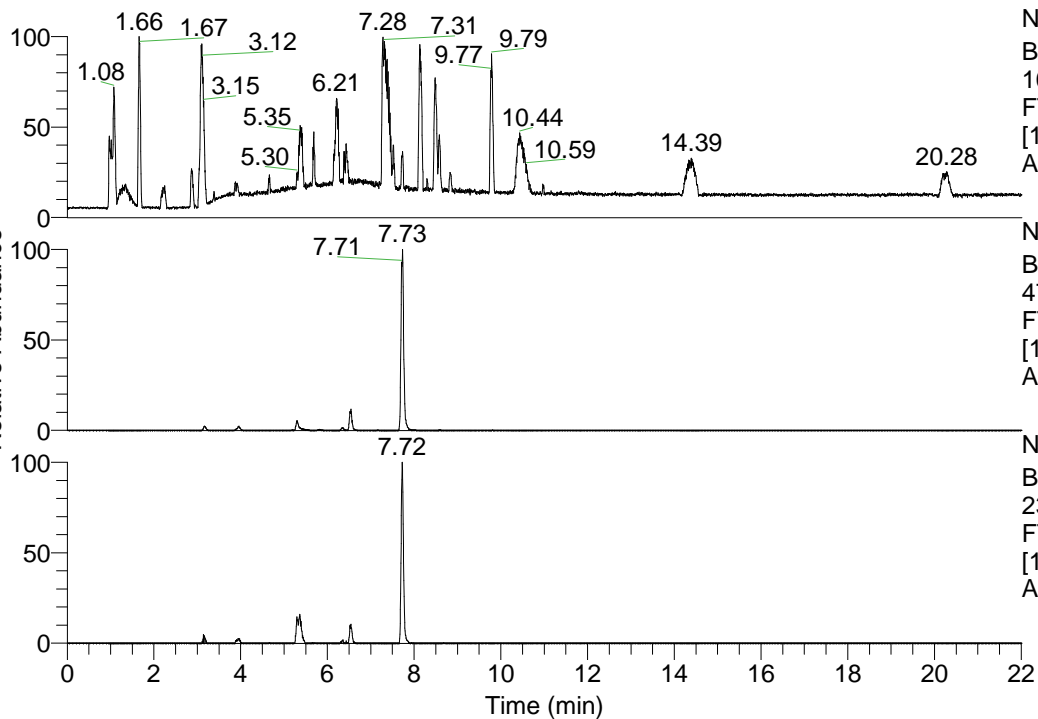


RT: 0.00 - 22.01



NL: 1.41E8
 Base Peak m/z=
 100.00000-1500.00000 F:
 FTMS + p ESI Full ms
 [100.00-1500.00] MS
 Aperta_HDX

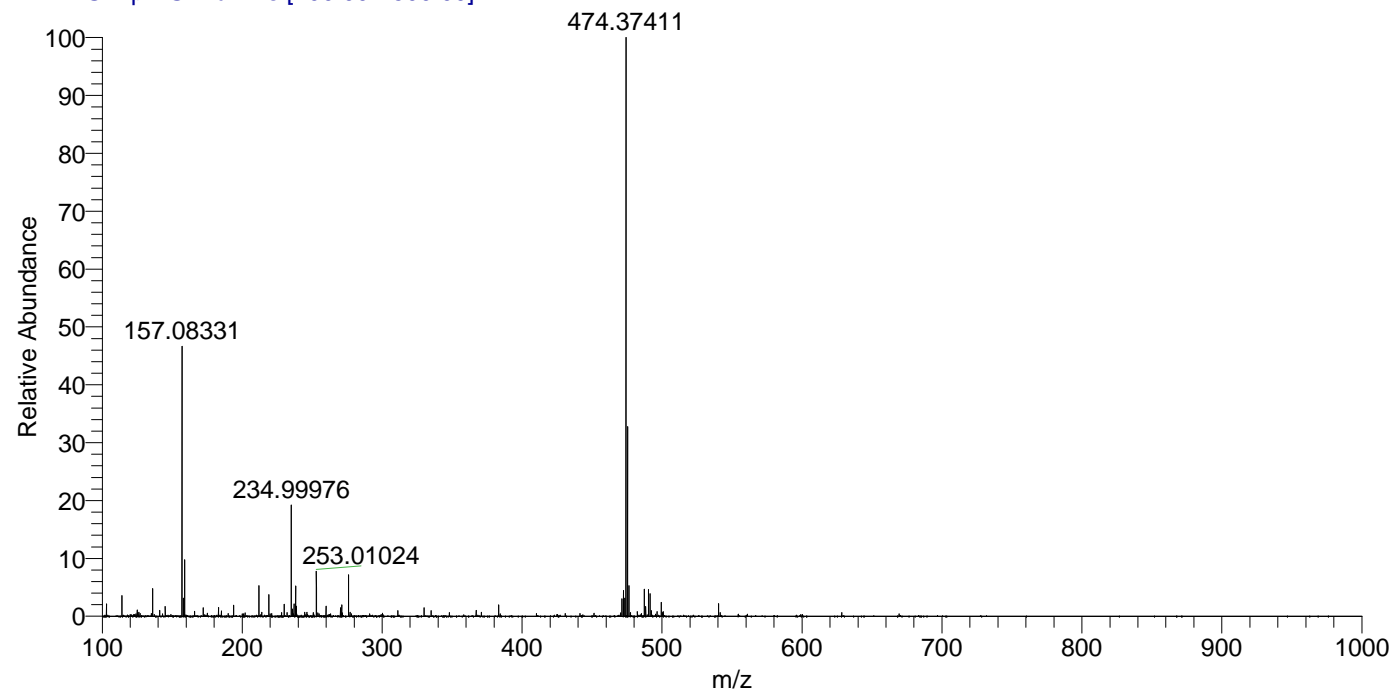
NL: 5.15E7
 Base Peak m/z=
 474.37305-474.37779 F:
 FTMS + p ESI Full ms
 [100.00-1500.00] MS
 Aperta_HDX

NL: 2.69E6
 Base Peak m/z=
 238.19357-238.19595 F:
 FTMS + p ESI Full ms
 [100.00-1500.00] MS
 Aperta_HDX

Aperta_HDX#1285 RT: 7.73
 T: FTMS + p ESI Full ms [100.00-1500.00]
 m/z= 474.00000-475.00000

m/z	Intensity	Relative	Delta (ppm)	Composition
474.37411	50964024.0	100.00	-1.59	C ₂₃ H ₃₂ ² H ₉ O ₄ N ₆
			1.67	C ₂₃ H ₃₀ ² H ₁₀ O ₄ N ₆
			-4.86	C ₂₃ H ₃₄ ² H ₈ O ₄ N ₆
			-8.12	C ₂₃ H ₃₆ ² H ₇ O ₄ N ₆

Aperta_HDX #1285 RT: 7.73 AV: 1 NL: 4.95E7
 T: FTMS + p ESI Full ms [100.00-1500.00]



Aperta_HDX #1285 RT: 7.73 AV: 1 NL: 4.95E7
 T: FTMS + p ESI Full ms [100.00-1500.00]

